



Olympic National Forest

Capitol State Forest

X

Quinault

Neilton

Grisdale

Matlock

Lilliwaup

Hoodsport

Potlatch

Tahuya

Union

Skokomish

Shelton

Agate

Kamilche

Wishkah

Aberdeen Gardens

McCleary

Elma

Malone-Porter

Hoquiam

Aberdeen

Montesano

Melbourne

Cosmopolis

Rony

Markham

Westport

Littlerock

QUINAUT  
SERVATION

clips

ean Grove

on Springs

Copalis Beach

Copalis Crossing

Newton

Ocean City

Oyehut-Hogans Corner

Corner

Ocean Shores

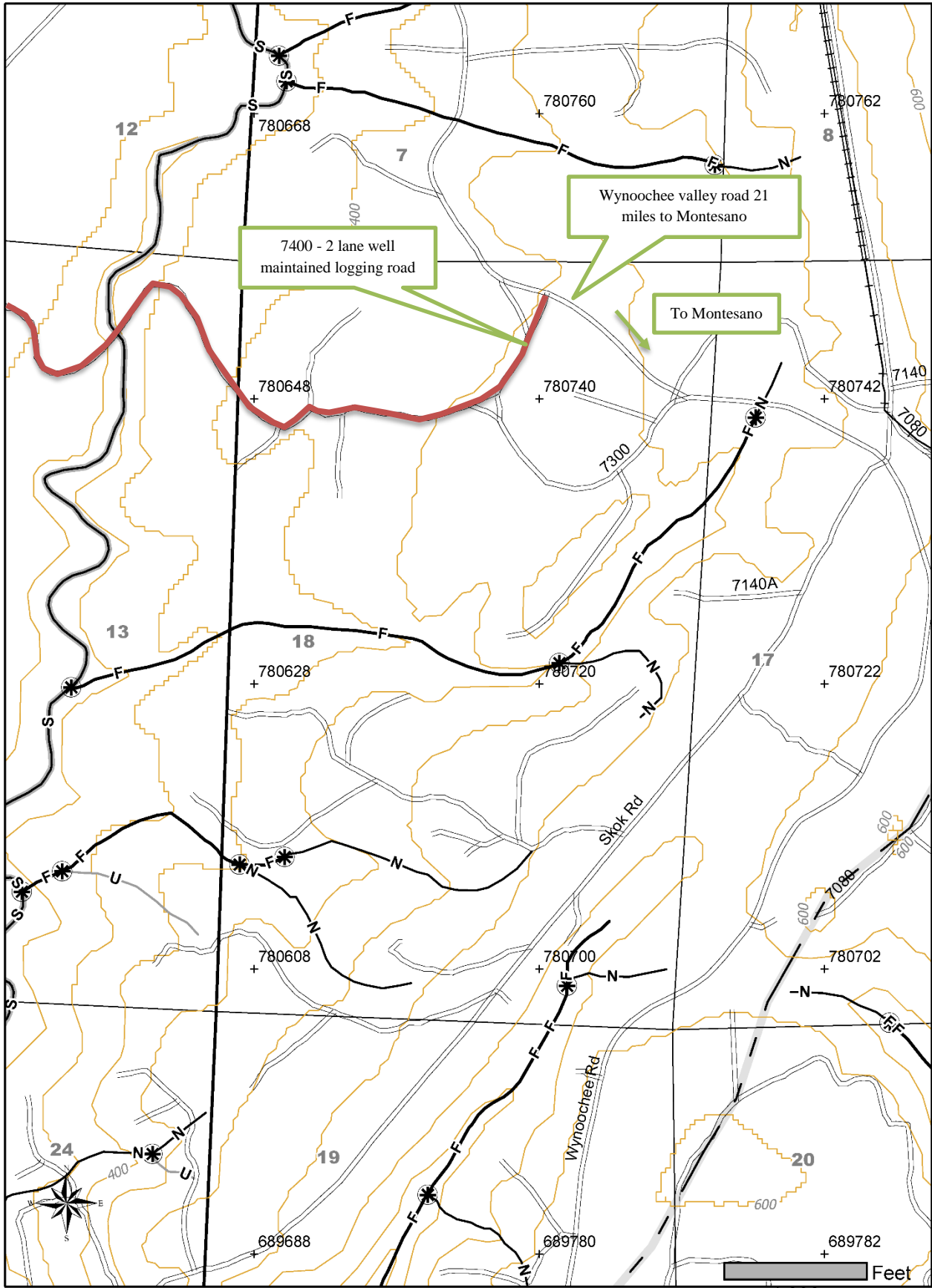
Cohasset

M

# FOREST PRACTICE ACTIVITY MAP

TOWNSHIP 20 NORTH HALF 0, RANGE 07 WEST (W.M.) HALF 0, SECTION 18

Wynoochee river fishing access



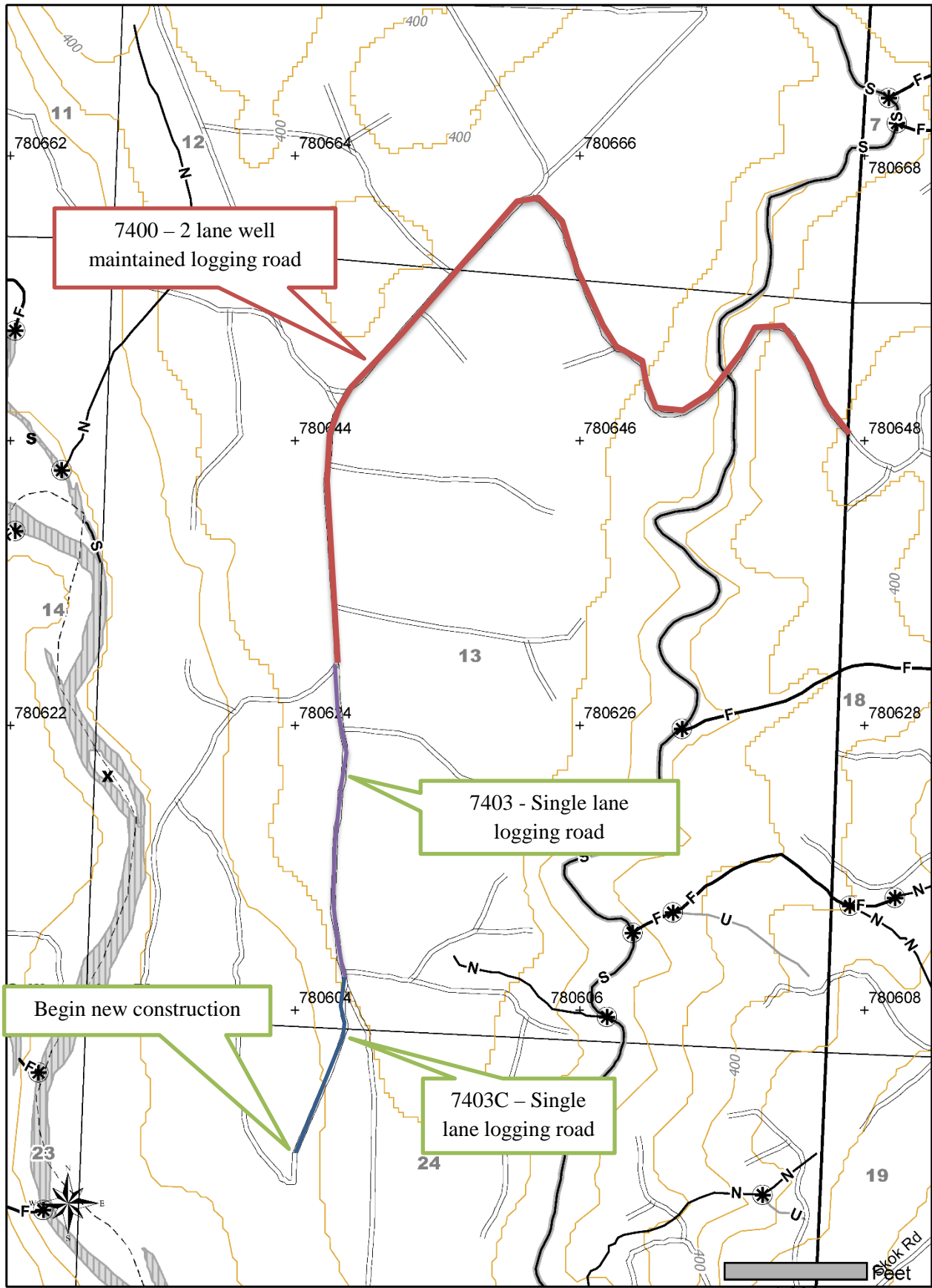
Please use the legend from the FPA Instruction or provide a list of symbols used.

Date: 8/20/2017 Time: 5:27:40 PM  
NAD 83  
Contour Interval: 40 Feet

# FOREST PRACTICE ACTIVITY MAP

TOWNSHIP 20 NORTH HALF 0, RANGE 08 WEST (W.M.) HALF 0, SECTION 13

Wynoochee river fishing access



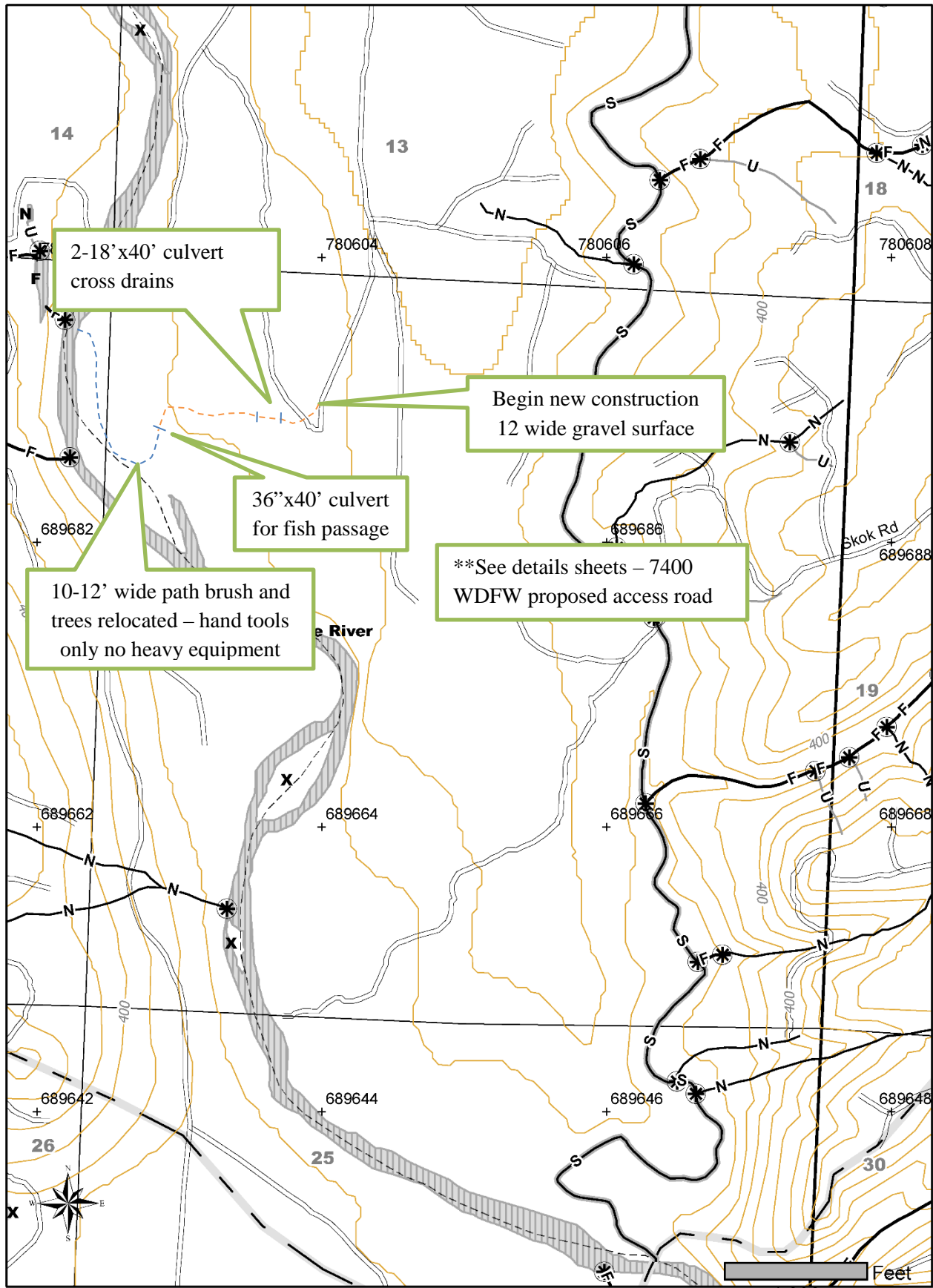
Please use the legend from the FPA Instruction or provide a list of symbols used.

Date: 8/20/2017 Time: 6:52:18 PM  
NAD 83  
Contour Interval: 40 Feet

# FOREST PRACTICE ACTIVITY MAP

TOWNSHIP 20 NORTH HALF 0, RANGE 08 WEST (W.M.) HALF 0, SECTION 24

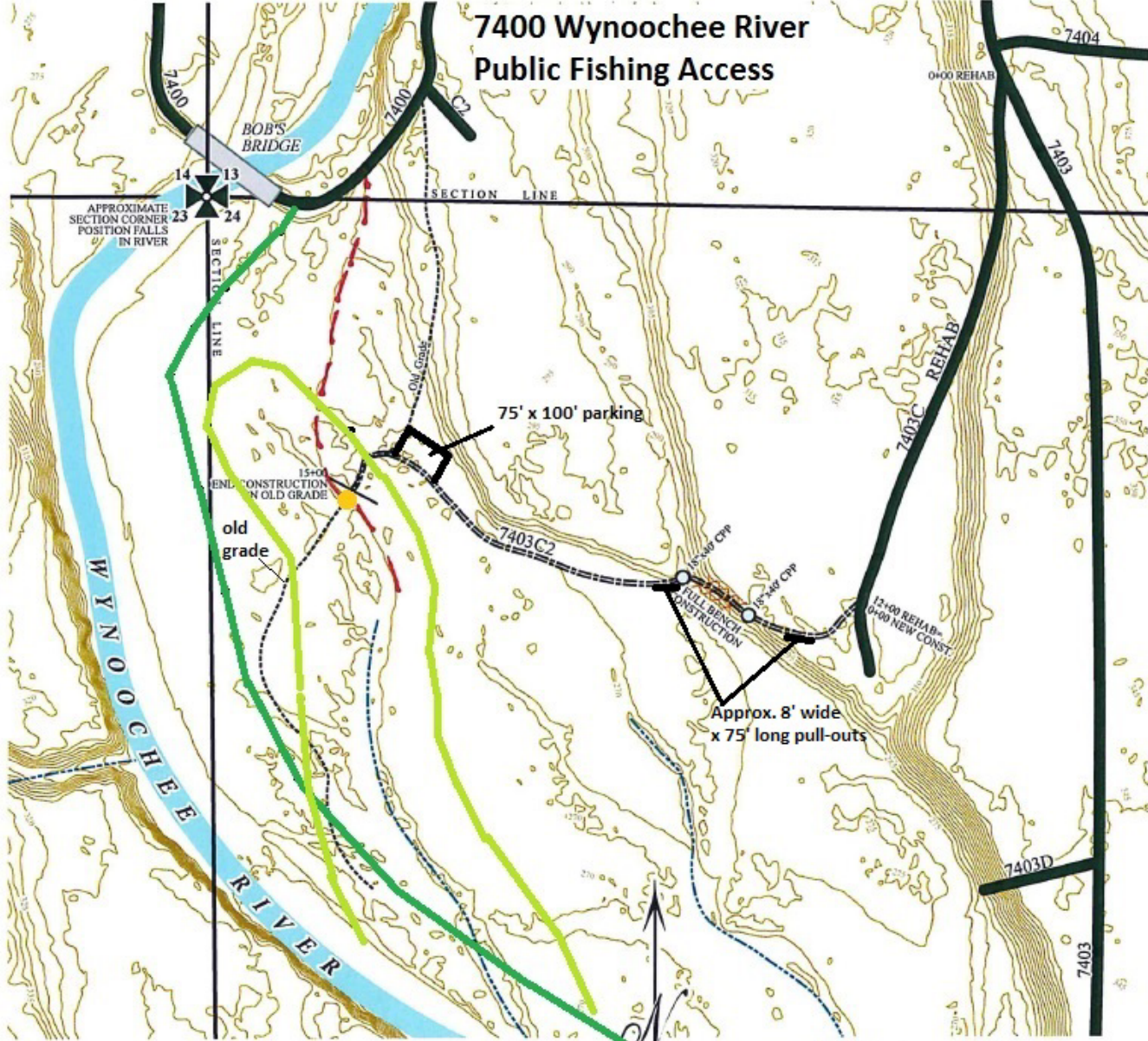
## Wynoochee river fishing access



Please use the legend from the FPA Instruction or provide a list of symbols used.

Date: 8/20/2017 Time: 4:53:32 PM  
NAD 83  
Contour Interval: 40 Feet

# 7400 Wynoochee River Public Fishing Access



APPROXIMATE SECTION CORNER POSITION FALLS IN RIVER

75' x 100' parking

ENL. CONSTRUCTION ON OLD GRADE  
old grade

FULL BENCH CONSTRUCTION

Approx. 8' wide x 75' long pull-outs

- - - - - : MODERN CMZ  
AS FLAGGED IN RED

200-ft shoreline buffer

150-ft stream buffer

Proposed culvert

0 200 400  
Feet  
Scale: 1" = 400'

Examples of the portion of work that will occur between the culvert and river. No heavy equipment will be used for this portion of the project. All work in this segment will be done with volunteers and hand tools to relocate small immature and dead trees, brush, and remove invasive plant species.

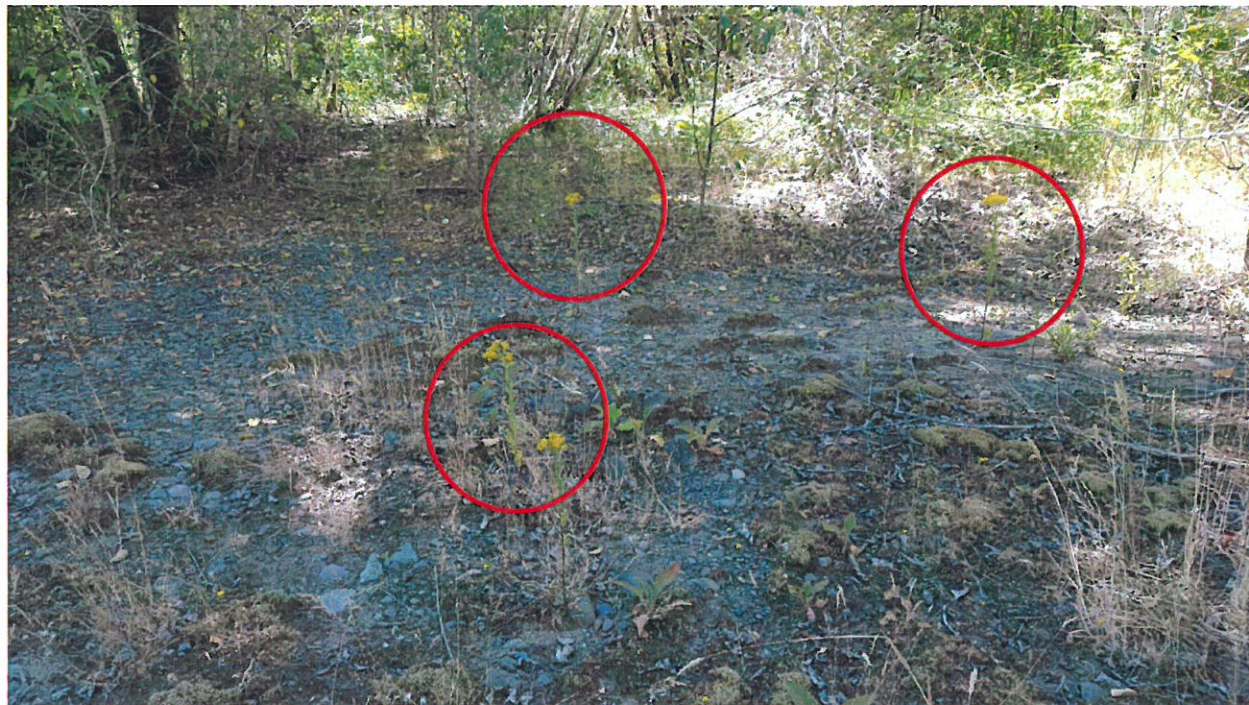


Figure 1 Example of immature trees that will be cut and relocated in 10-12 foot path.



Figure 2 Another example of the trees and brush that will be relocated.

Examples of invasive plants that will be removed along the path. Invasive plant species will be removed 50' either side of centerline of the cleared trail.



*Figure 3 Tansy that will be removed 50 feet either side of the road on the gravel bar. This will add up to 3.2 acres of invasive plant removal.*