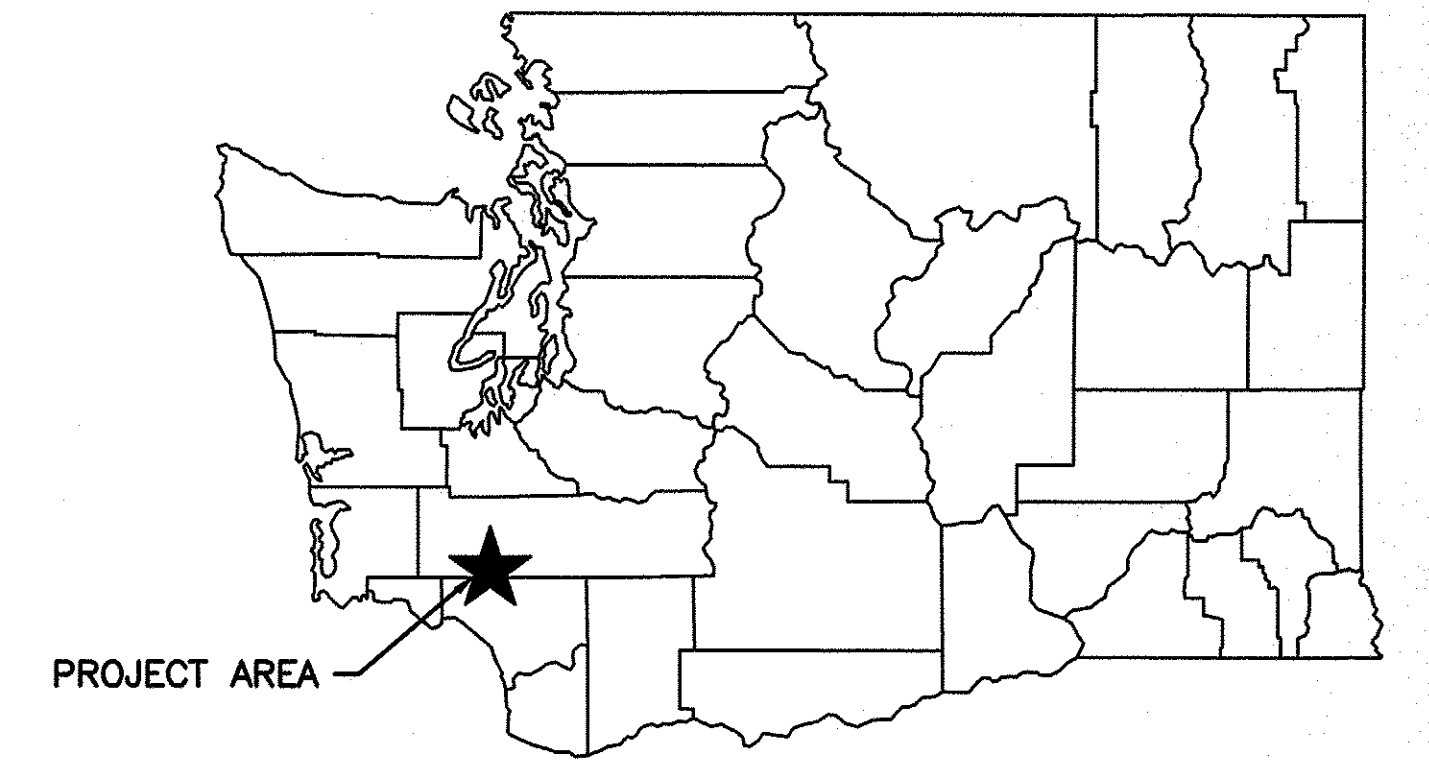
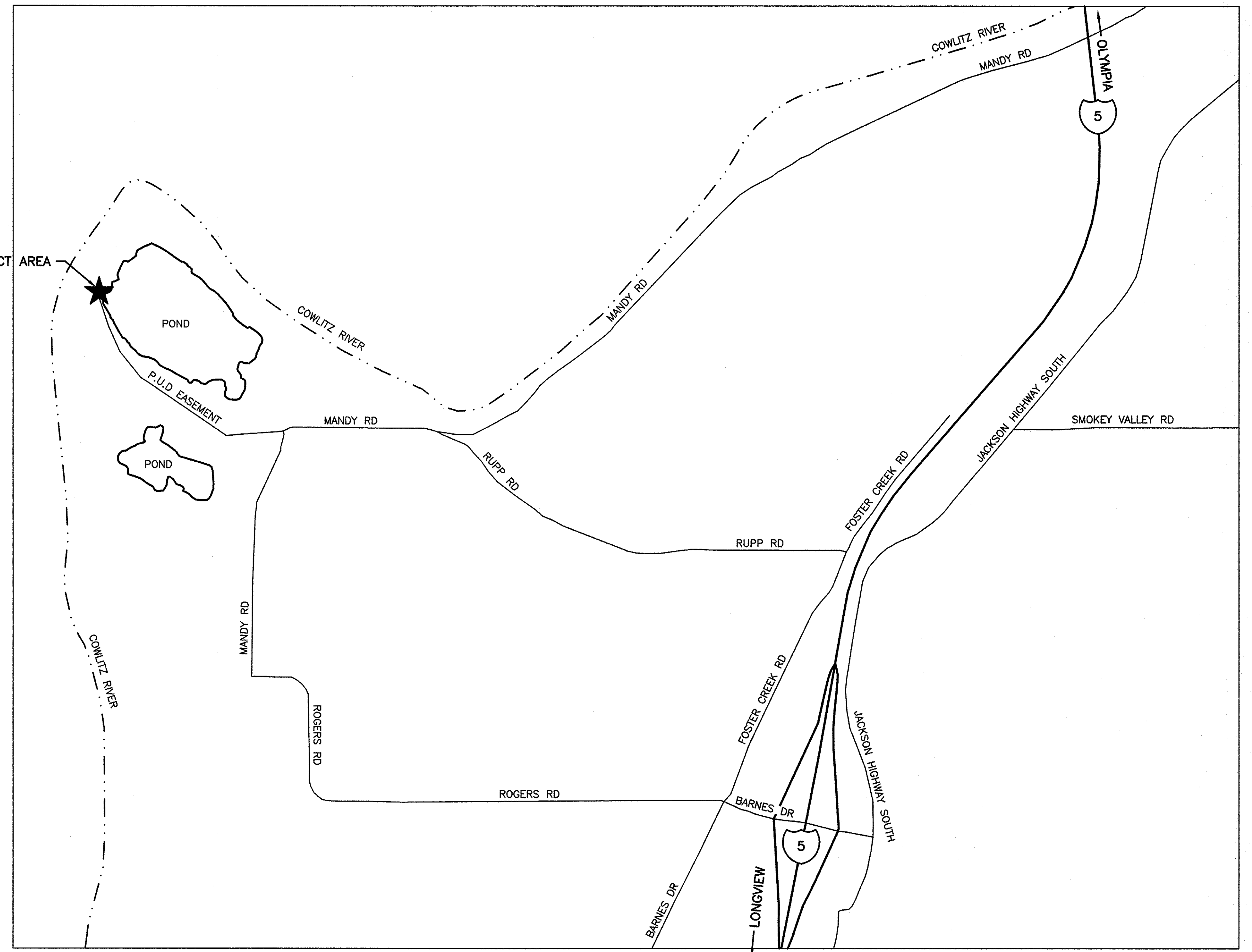


VICINITY MAP  
NOT TO SCALE



STATE MAP  
NOT TO SCALE



LOCAL MAP  
NOT TO SCALE

WASHINGTON STATE  
DEPARTMENT OF FISH AND WILDLIFE

SYM		DATE	REVISION DESCRIPTION	BY
APPROVED AND RELEASED FOR CONSTRUCTION				
CHIEF ENGINEER		<i>[Signature]</i>	DATE: 25 Aug 17	
PROGRAM			DATE: 8/24/2017	

0 — 1" BAR MEASURES ONE INCH ON ORIGINAL DRAWINGS

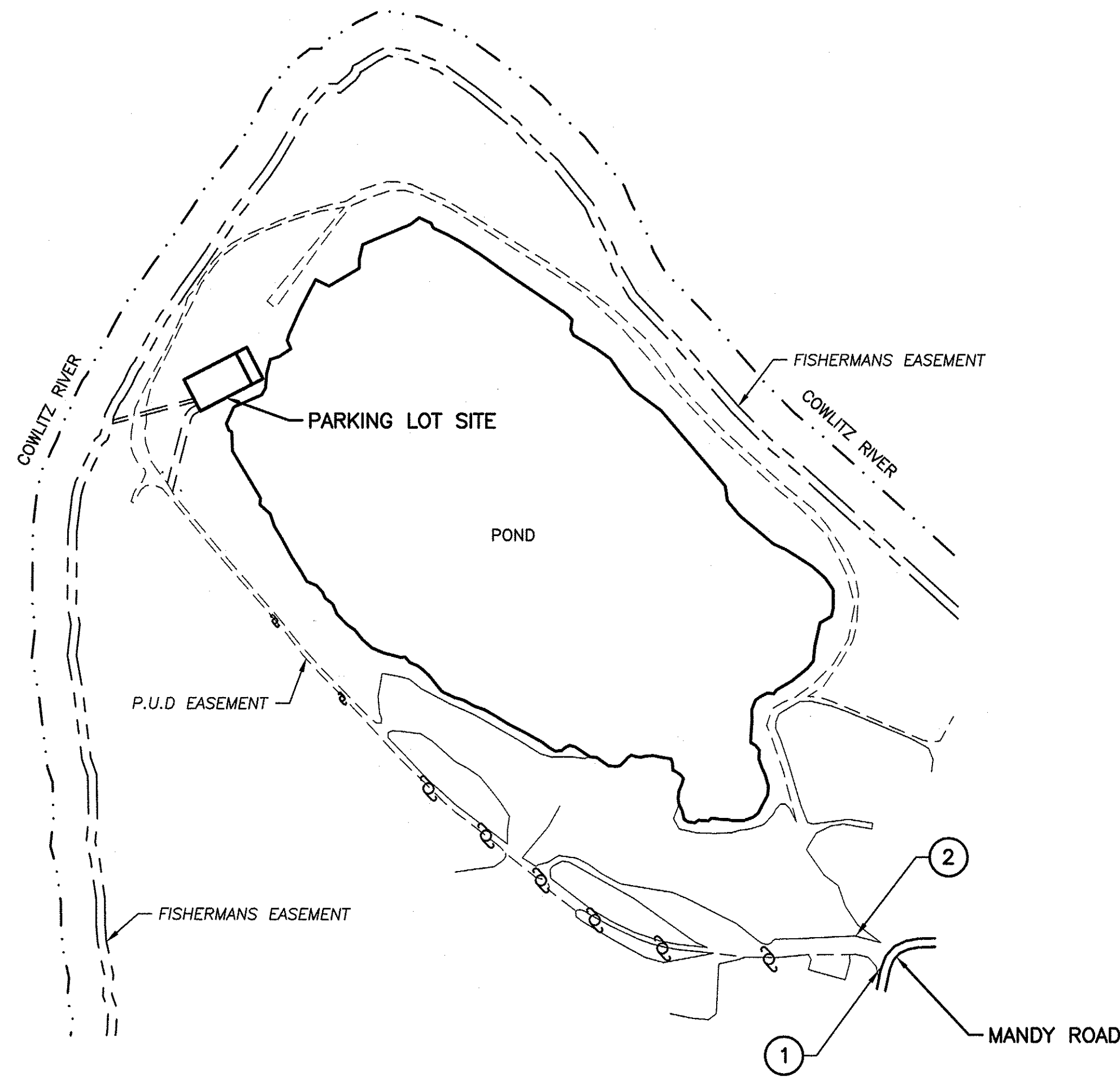
DESIGNED BY: RAE  
CHECKED BY:  
DRAWN BY: R. ENGELHARDT  
DATE: 8/24/2017

WALLACE ACCESS (COWLITZ RIVER)  
PARKING AREA DEVELOPMENT  
STATE, LOCAL,  
AND VICINITY MAPS

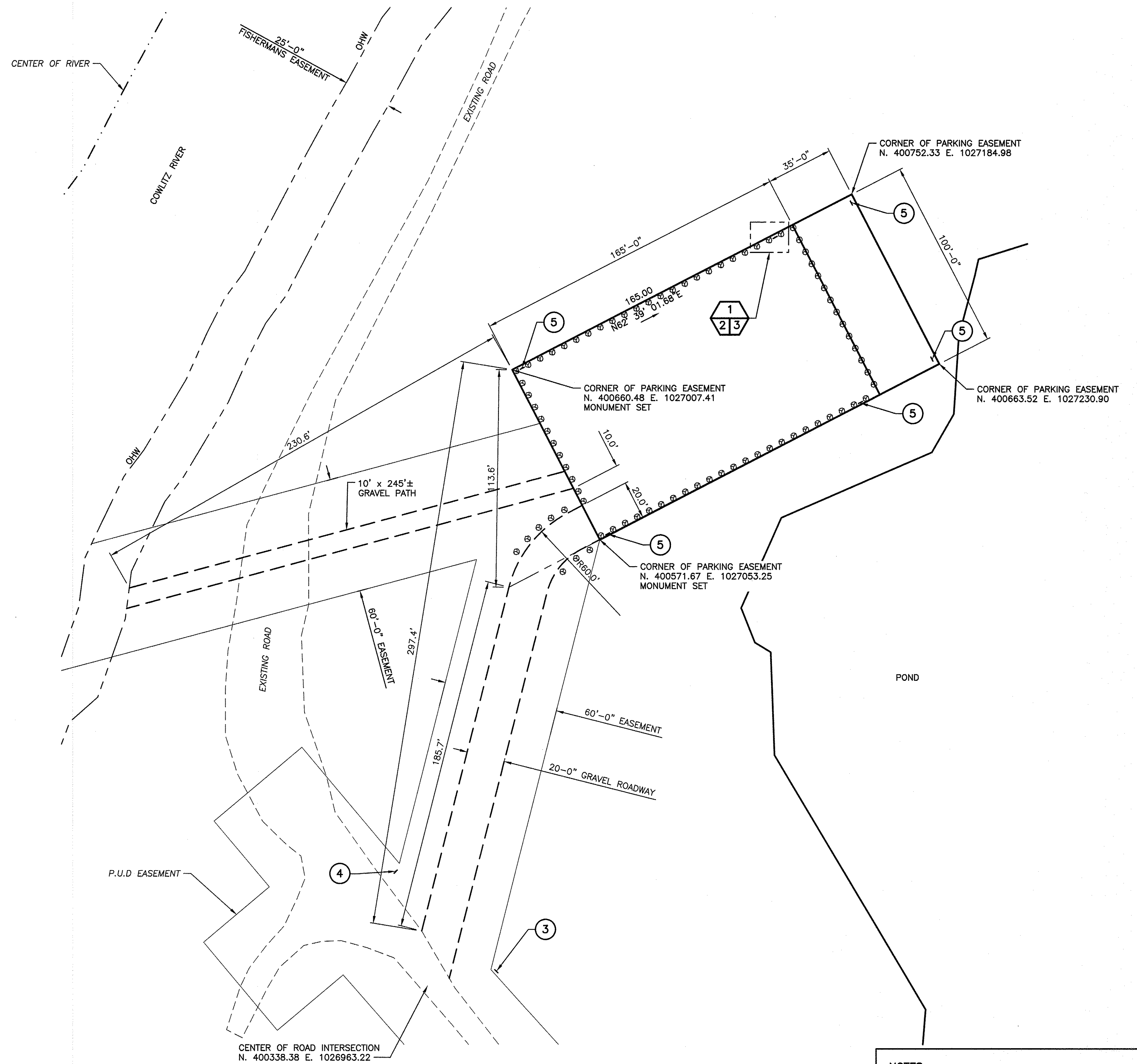
PROJECT NO.  
LS:A293:17-1

SHEET	OF
1	3





**SITE PLAN**  
NOT TO SCALE



**WORK AREA**  
SCALE: 1" = 30'-0"

**NOTES:**  
 # DENOTES SIGN TYPE  
 1. SEE PAGE 3 FOR SIGN INSTALLATION AND CHART

WASHINGTON STATE  
DEPARTMENT OF FISH AND WILDLIFE

SYM	DATE	REVISION DESCRIPTION	BY
		APPROVED AND RELEASED FOR CONSTRUCTION	
		DESIGNED BY: RAE	
		CHECKED BY:	
		CHIEF ENGINEER: <i>[Signature]</i> DATE: 25 MAY 17	
		PROGRAM: DATE: 8/24/2017	

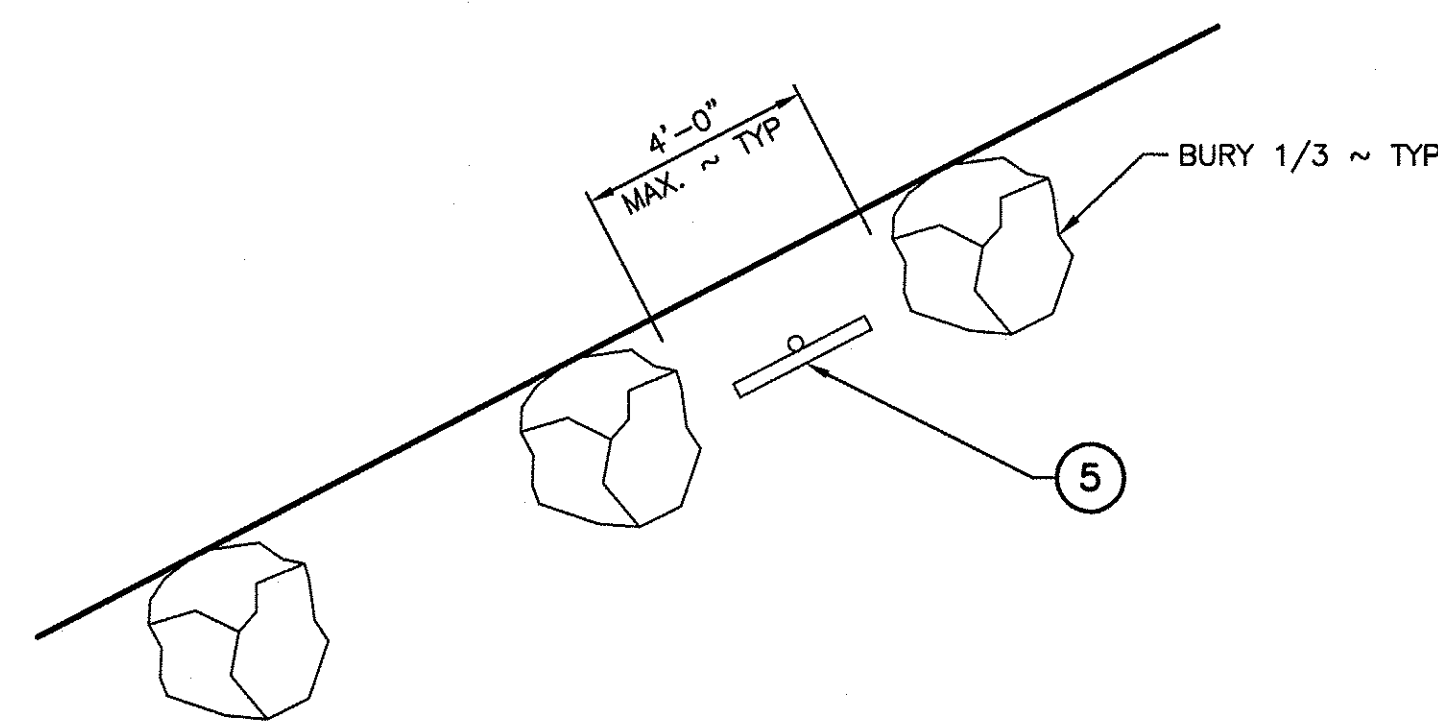
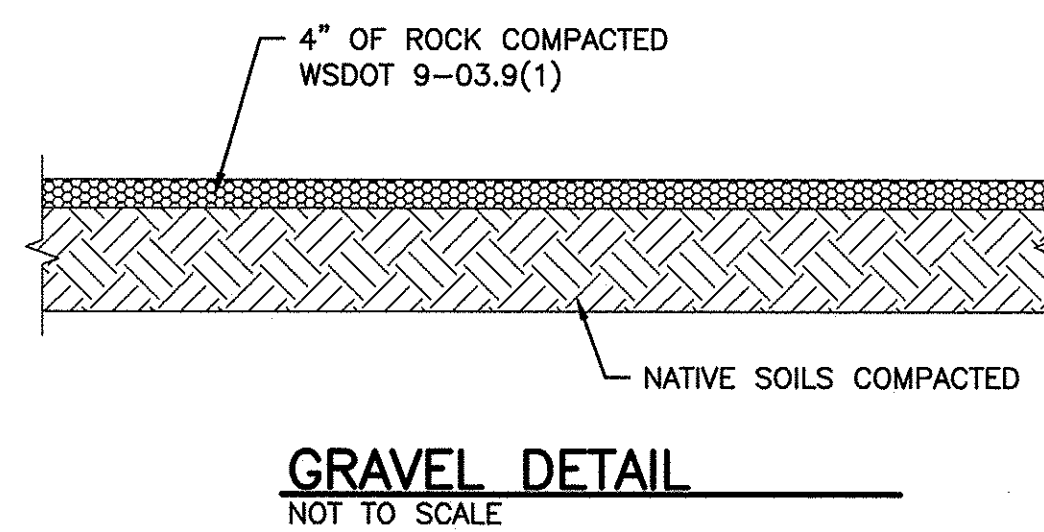
0" = 1"  
BAR MEASURES  
ONE INCH ON  
ORIGINAL DRAWINGS

WALLACE ACCESS (COWLITZ RIVER)  
PARKING AREA DEVELOPMENT  
SITE PLAN

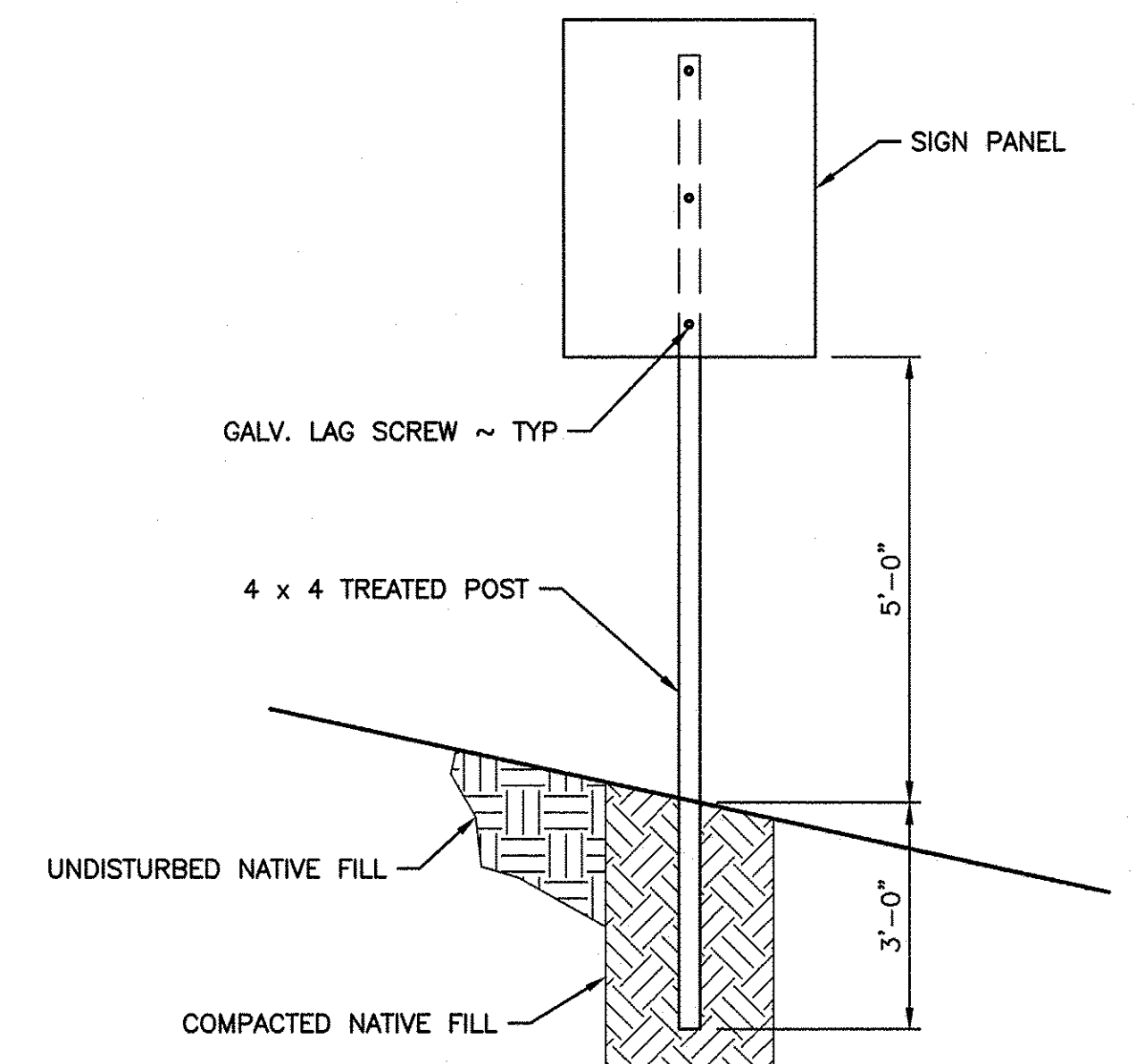
PROJECT NO.  
LS:A293:17-1  
SHEET 2 OF 3

SIGN CHART		
NUMBER	SIGN	COUNT
1	PUBLIC FISHING	1
2	CAUTION WATCH FOR LARGE EQUIPMENT	1
3	PRIVATE PROPERTY	1
4	NO UNAUTHORIZED VEHICLES BEYOND THIS POINT	1
5	NO ACCESS BEYOND THIS POINT	6

CUT AND FILL				
LOCATION	SQ. FT.	CUT	FILL	MATERIAL
GRAVEL PARKING	16,500		202 CU.YD	GRAVEL
BARRIER ROCK			80 CU.YD	ROCK
ROAD	4,930		61 CU.YD	GRAVEL
10' WIDE TRAIL	2,361		14 CU.YD	GRAVEL
SURFACE CUT		130 CU.YD		
TOTAL		130 CU.YD	357 CU.YD	



**BARRIER ROCK**  
NOT TO SCALE



**SIGN INSTALLATION**  
NOT TO SCALE

**NOTES:**

- USE WSDOT STANDARD TIMBER SIGN SUPPORT G22.10-02
- ALTERNATE STEEL SIGN SUPPORT. USE WSDOT TYPE ST-2 SIGN SUPPORT G24.50-03

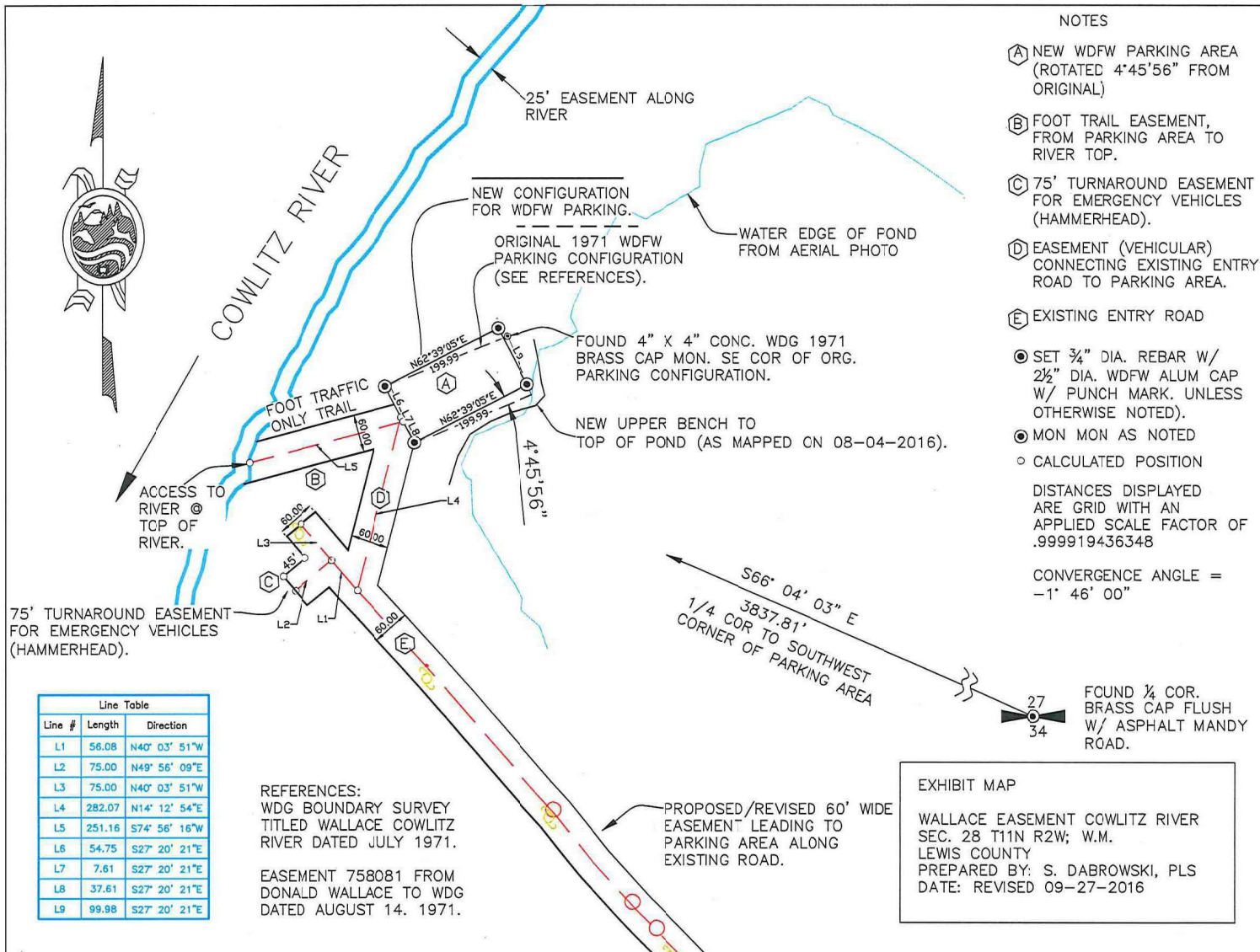
WASHINGTON STATE  
DEPARTMENT OF FISH AND WILDLIFE

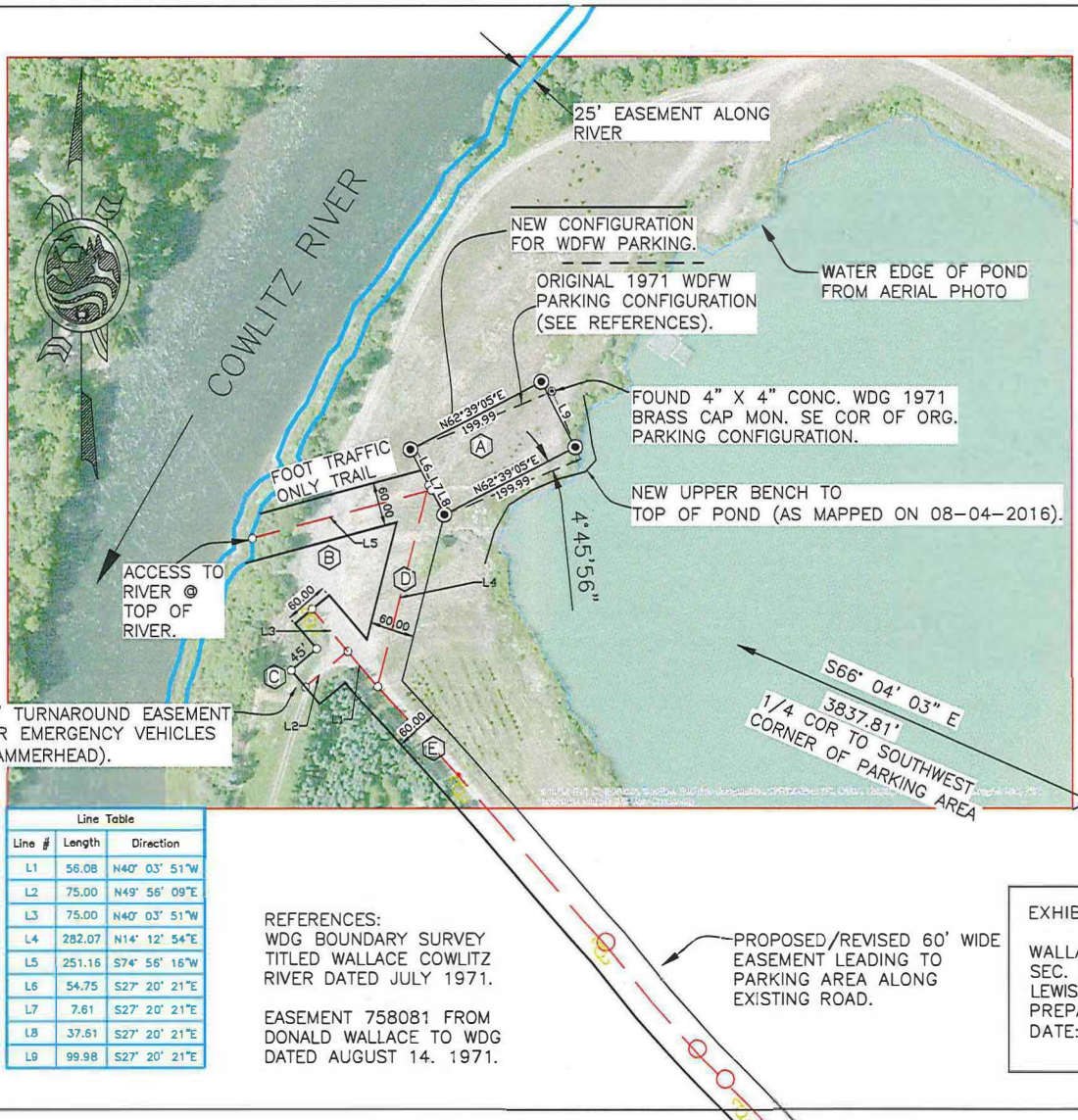
SYM		DATE	REVISION DESCRIPTION	BY
APPROVED AND RELEASED FOR CONSTRUCTION				
CHIEF ENGINEER	DATE: 25 Aug 17		CHECKED BY: RAE	DESIGNED BY: RAE
PROGRAM	DATE: 8/24/2017		CHECKED BY: R. ENGELHARDT	DESIGNED BY: R. ENGELHARDT

WALLACE ACCESS (COWLITZ RIVER)  
PARKING AREA DEVELOPMENT  
SITE DETAILS

PROJECT NO.  
LS:A293:17-1

SHEET 3 OF 3





NOTES

- (A) NEW WDFW PARKING AREA (ROTATED 4°45'56" FROM ORIGINAL)
  - (B) FOOT TRAIL EASEMENT, FROM PARKING AREA TO RIVER TOP.
  - (C) 75' TURNAROUND EASEMENT FOR EMERGENCY VEHICLES (HAMMERHEAD).
  - (D) EASEMENT (VEHICULAR) CONNECTING EXISTING ENTRY ROAD TO PARKING AREA.
  - (E) EXISTING ENTRY ROAD
  - SET ¾" DIA. REBAR W/ 2½" DIA. WDFW ALUM CAP W/ PUNCH MARK. UNLESS OTHERWISE NOTED).
  - MON MON AS NOTED
  - CALCULATED POSITION
- DISTANCES DISPLAYED ARE GRID WITH AN APPLIED SCALE FACTOR OF .999919436348
- CONVERGENCE ANGLE = -1° 46' 00"

75' TURNAROUND EASEMENT FOR EMERGENCY VEHICLES (HAMMERHEAD).

Line #	Length	Direction
L1	56.08	N40° 03' 51"W
L2	75.00	N49° 56' 09"E
L3	75.00	N40° 03' 51"W
L4	282.07	N14° 12' 54"E
L5	251.16	S74° 56' 16"W
L6	54.75	S27° 20' 21"E
L7	7.61	S27° 20' 21"E
L8	37.61	S27° 20' 21"E
L9	99.98	S27° 20' 21"E

REFERENCES:  
WDG BOUNDARY SURVEY TITLED WALLACE COWLITZ RIVER DATED JULY 1971.

EASEMENT 758081 FROM DONALD WALLACE TO WDG DATED AUGUST 14, 1971.

PROPOSED/REVISED 60' WIDE EASEMENT LEADING TO PARKING AREA ALONG EXISTING ROAD.

EXHIBIT MAP  
WALLACE EASEMENT COWLITZ RIVER SEC. 28 T11N R2W; W.M. LEWIS COUNTY  
PREPARED BY: S. DABROWSKI, PLS  
DATE: REVISED 09-27-2016



FOUND ¼ COR. BRASS CAP FLUSH W/ ASPHALT MANDY ROAD.

S66° 04' 03" E  
3837.81'  
1/4 COR TO SOUTHWEST CORNER OF PARKING AREA

FOUND 4" X 4" CONC. WDG BRASS CAP MON. SE COR OF ORG. PARKING CONFIGURATION.

NEW UPPER BENCH TO TOP OF POND (AS MAPPED ON 08-04-2016).

NEW CONFIGURATION FOR WDFW PARKING.  
ORIGINAL 1971 WDFW PARKING CONFIGURATION (SEE REFERENCES).

25' EASEMENT ALONG RIVER

ACCESS TO RIVER @ TOP OF RIVER.

FOOT TRAFFIC ONLY TRAIL

WATER EDGE OF POND FROM AERIAL PHOTO