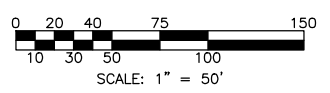
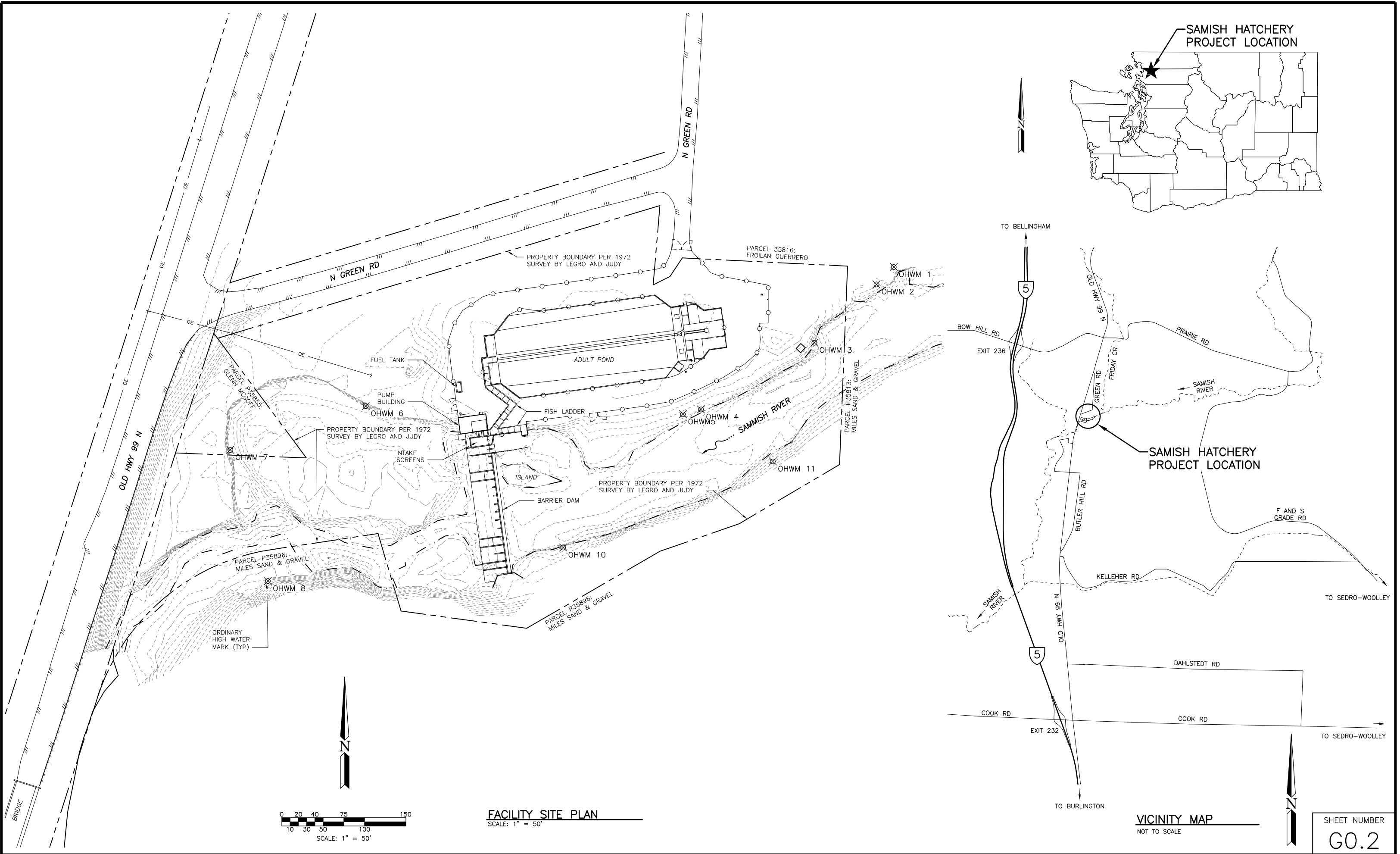


6/29/2017 9:05:17 AM - P:\15891\135-15891-16003\CAD\SHEETFILES\H03161002.DWG - NORDHOLM, ERIC



**FACILITY SITE PLAN**  
SCALE: 1" = 50'



**VICINITY MAP**  
NOT TO SCALE

**TETRA TECH**  
www.tetrattech.com  
1420 Fifth Avenue, Suite 600  
Seattle, WA 98101  
Tel 206.883.9430 Fax 206.883.9301

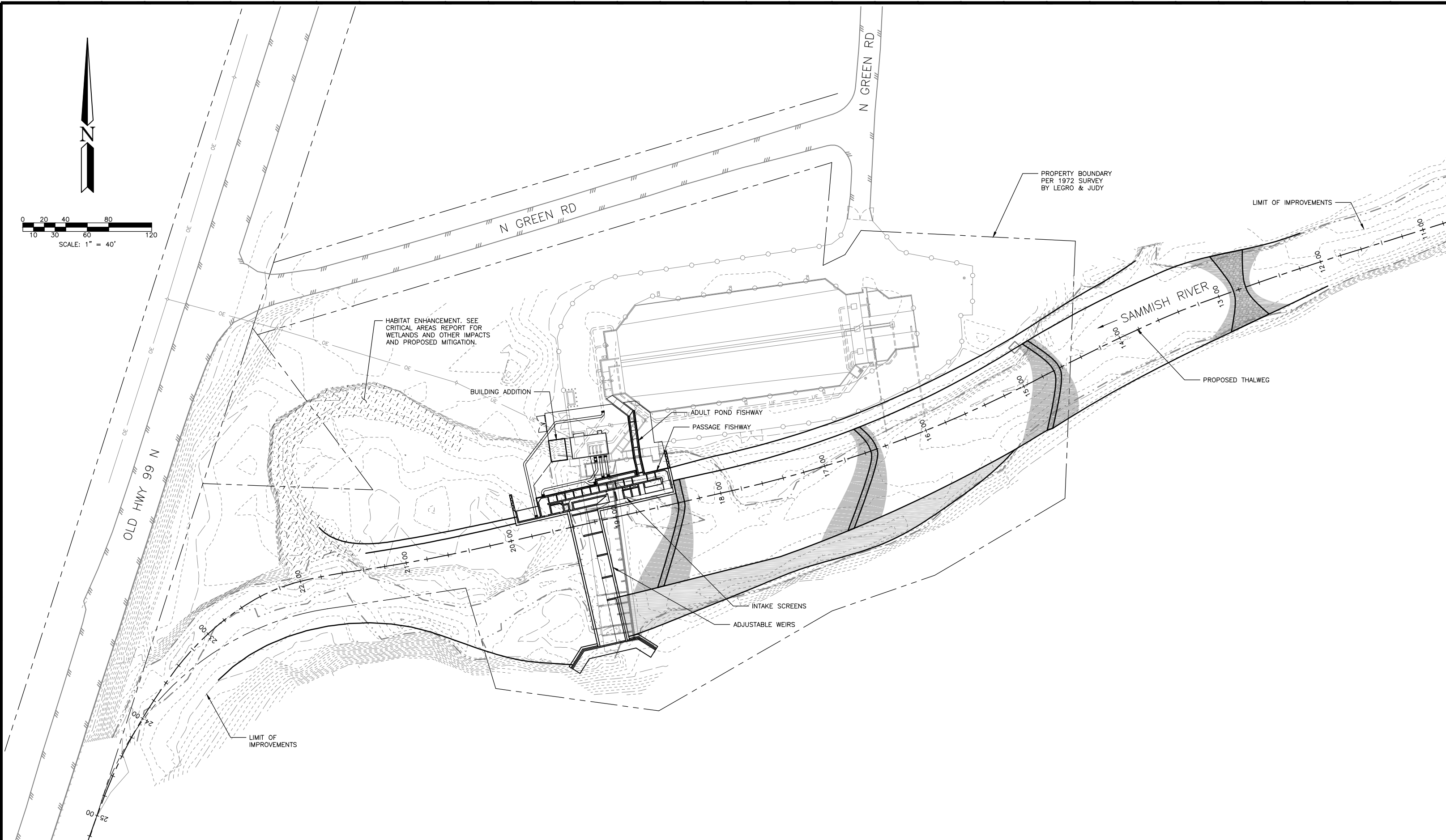
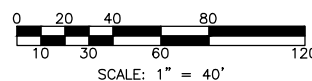
**WASHINGTON STATE**  
**DEPARTMENT OF FISH AND WILDLIFE**

|                                           |      |                      |                |
|-------------------------------------------|------|----------------------|----------------|
| SYMBOL                                    | DATE | REVISION DESCRIPTION | BY             |
| APPROVED AND RECOMMENDED FOR CONSTRUCTION |      |                      |                |
| CHIEF ENGINEER                            | DATE | DESIGNED BY          | DATE           |
| PROGRAM                                   | DATE | CHECKED BY           | DATE           |
|                                           |      | DRAWN BY EGN         | DATE JUNE 2017 |

**NOT FOR CONSTRUCTION**

**SAMISH HATCHERY**  
**INTAKE RENOVATION**  
**STATE, VICINITY AND**  
**EXISTING SITE PLAN**

|              |    |            |  |
|--------------|----|------------|--|
| SHEET NUMBER |    | G0.2       |  |
| PROJECT NO.  |    | ST:H3:16-1 |  |
| SHEET        | OF | 2          |  |



9/11/2017 10:37:53 PM - C:\USERS\DARRANCE\DOCUMENTS\2 PROJECTS\SAMISH\CAD\H031610003.DWG - INCE, DARRANCE

**TETRA TECH**  
www.tetrattech.com  
1420 Fifth Avenue, Suite 600  
Seattle, WA 98101  
Tel 206.883.9430 Fax 206.883.9301

**WASHINGTON STATE**  
**DEPARTMENT OF FISH AND WILDLIFE**

|                                        |      |                        |             |
|----------------------------------------|------|------------------------|-------------|
| SYMBOL                                 | DATE | REVISION / DESCRIPTION | BY          |
| APPROVED AND RELEASED FOR CONSTRUCTION |      |                        |             |
| CHIEF ENGINEER                         | DATE | DESIGNED BY            | DATE        |
| PROGRAM                                | DATE | CHECKED BY             | DATE        |
|                                        |      | DRAWN BY               | DATE        |
|                                        |      |                        | AUGUST 2017 |

0 ——— 1"  
BAR MEASURES  
ONE INCH ON  
ORIGINAL DRAWINGS

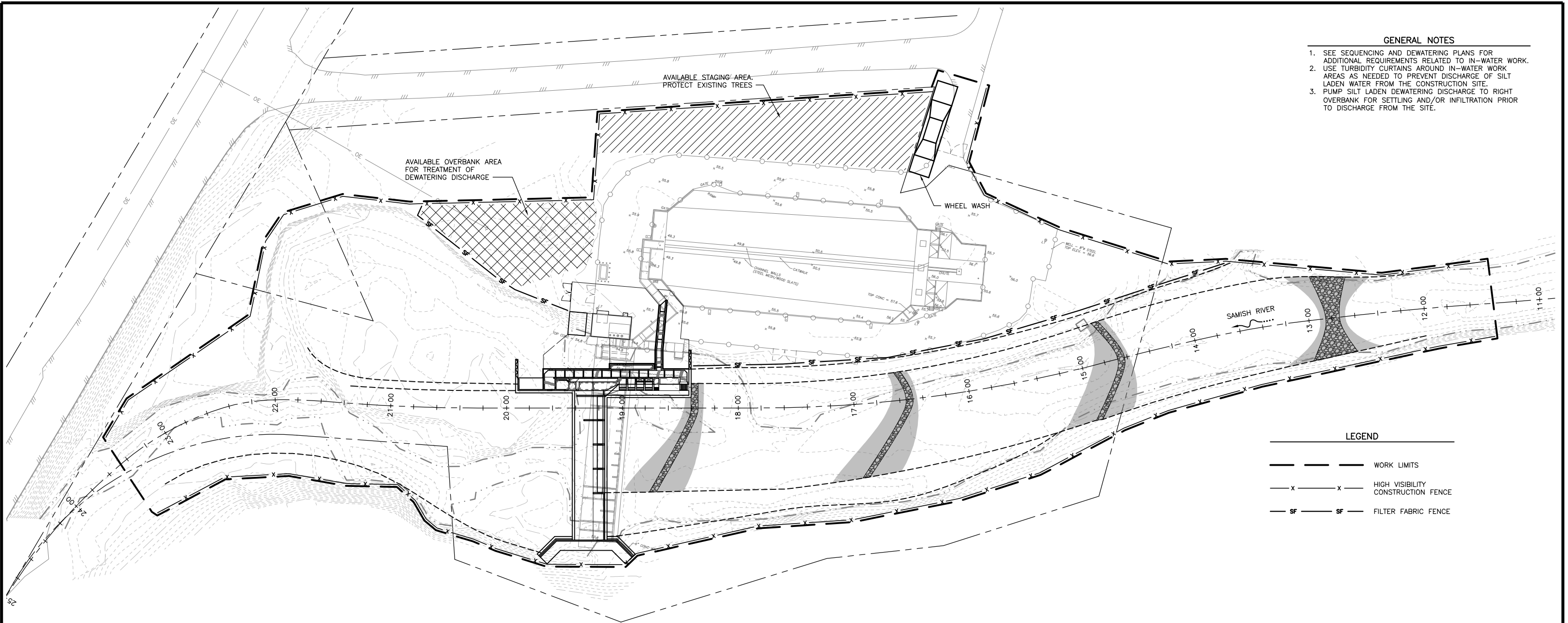
**SAMISH HATCHERY**  
**INTAKE RENOVATION**  
**GENERAL SITE PLAN**

|              |    |
|--------------|----|
| SHEET NUMBER |    |
| G0.3         |    |
| PROJECT NO.  |    |
| ST:H3:16-1   |    |
| SHEET        | OF |
| 3            | 3  |

NOT FOR  
CONSTRUCTION

**GENERAL NOTES**

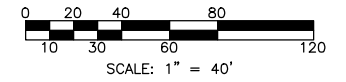
1. SEE SEQUENCING AND DEWATERING PLANS FOR ADDITIONAL REQUIREMENTS RELATED TO IN-WATER WORK.
2. USE TURBIDITY CURTAINS AROUND IN-WATER WORK AREAS AS NEEDED TO PREVENT DISCHARGE OF SILT LADEN WATER FROM THE CONSTRUCTION SITE.
3. PUMP SILT LADEN DEWATERING DISCHARGE TO RIGHT OVERBANK FOR SETTLING AND/OR INFILTRATION PRIOR TO DISCHARGE FROM THE SITE.



**LEGEND**

|  |                                    |
|--|------------------------------------|
|  | WORK LIMITS                        |
|  | HIGH VISIBILITY CONSTRUCTION FENCE |
|  | FILTER FABRIC FENCE                |

**EROSION CONTROL SITE PLAN**  
SCALE: 1" = 40'



5/20/2017 3:35:12 PM - P:\15891\135-15891-16003\CAD\SHEETFILES\H003161\01\0.DWG - NORDHOLM, ERK

**TETRA TECH**  
www.tetrattech.com  
1420 Fifth Avenue, Suite 600  
Seattle, WA 98101  
Tel 206.883.9430 Fax 206.883.9301

**WASHINGTON STATE**  
**DEPARTMENT OF FISH AND WILDLIFE**

|                                        |  |       |  |                |  |
|----------------------------------------|--|-------|--|----------------|--|
| SYM                                    |  | DATE  |  | BY             |  |
| APPROVED AND RELEASED FOR CONSTRUCTION |  |       |  |                |  |
| CHIEF ENGINEER                         |  | DATE: |  | DESIGNED BY    |  |
| PROGRAM                                |  | DATE: |  | CHECKED BY     |  |
|                                        |  |       |  | DRAWN BY       |  |
|                                        |  |       |  | DATE: MAY 2017 |  |

**SAMISH HATCHERY**  
**INTAKE RENOVATION**  
**EROSION CONTROL**  
**SITE PLAN**

|              |     |
|--------------|-----|
| SHEET NUMBER |     |
| GO.10        |     |
| PROJECT NO.  |     |
| ST:H3:16-1   |     |
| SHEET        | OF  |
| 10           | 120 |

**NOT FOR CONSTRUCTION**