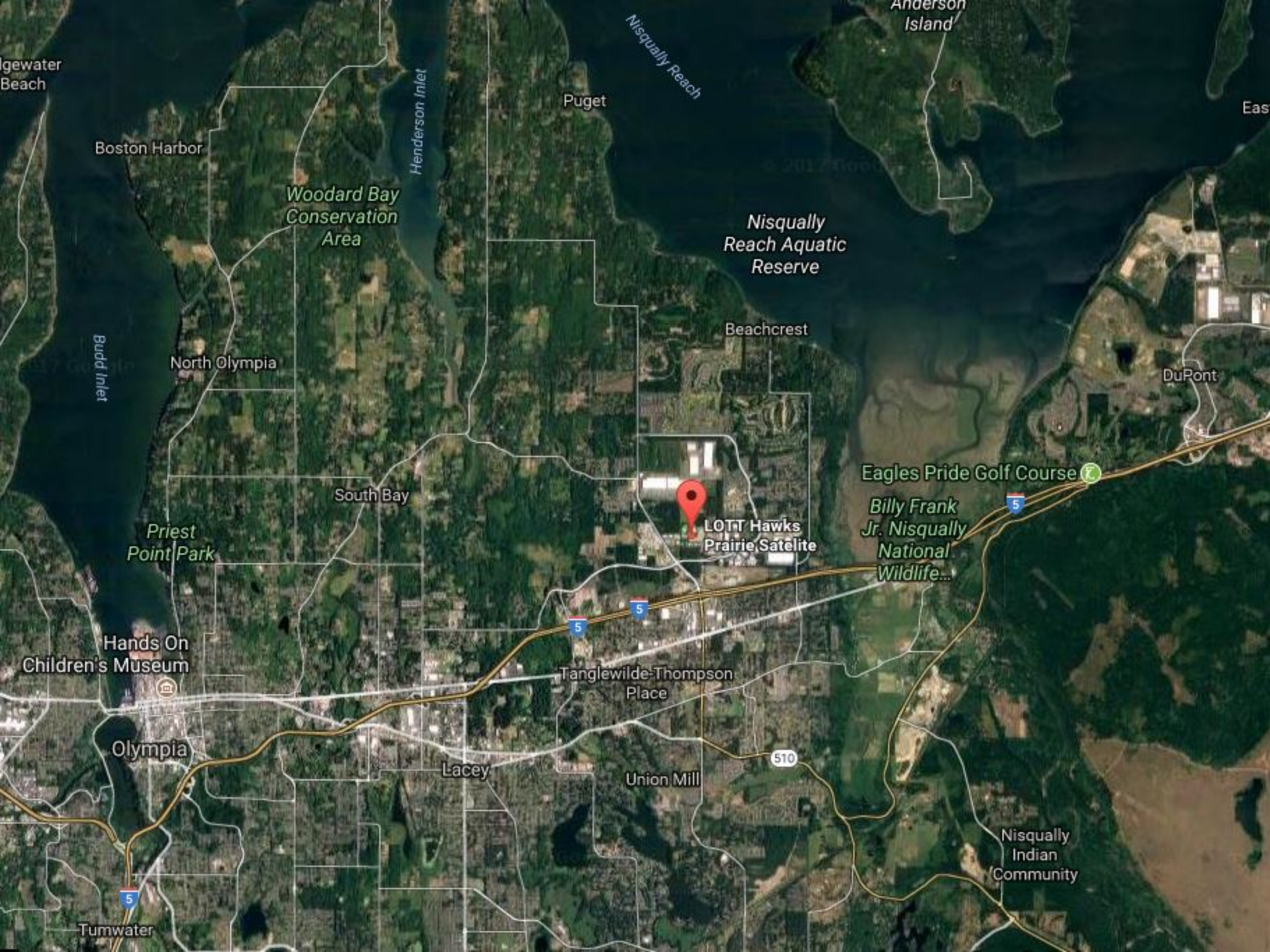


LOTT Hawks Prairie Ponds and Recharge Basins
Vicinity Map - N.T.S.



Ngewater Beach

Boston Harbor

Woodard Bay Conservation Area

Puget

Nisqually Reach

Anderson Island

East

Nisqually Reach Aquatic Reserve

Beachcrest

North Olympia

DuPont

Budd Inlet

South Bay

LOTT Hawks Prairie Satellite

Eagles Pride Golf Course

Billy Frank Jr. Nisqually National Wildlife...

Priest Point Park

Hands On Children's Museum

Tanglewilde-Thompson Place

Olympia

Lacey

Union Mill

510

Nisqually Indian Community

Tumwater

Thurston County Map













Disclaimer: Thurston County makes every effort to ensure that this map is a true and accurate representation of the work of County government. However, the County and all related personnel make no warranty, expressed or implied, regarding the accuracy, completeness or convenience of any information disclosed on this map. Nor does the County accept liability for any damage or injury caused by the use of this map.

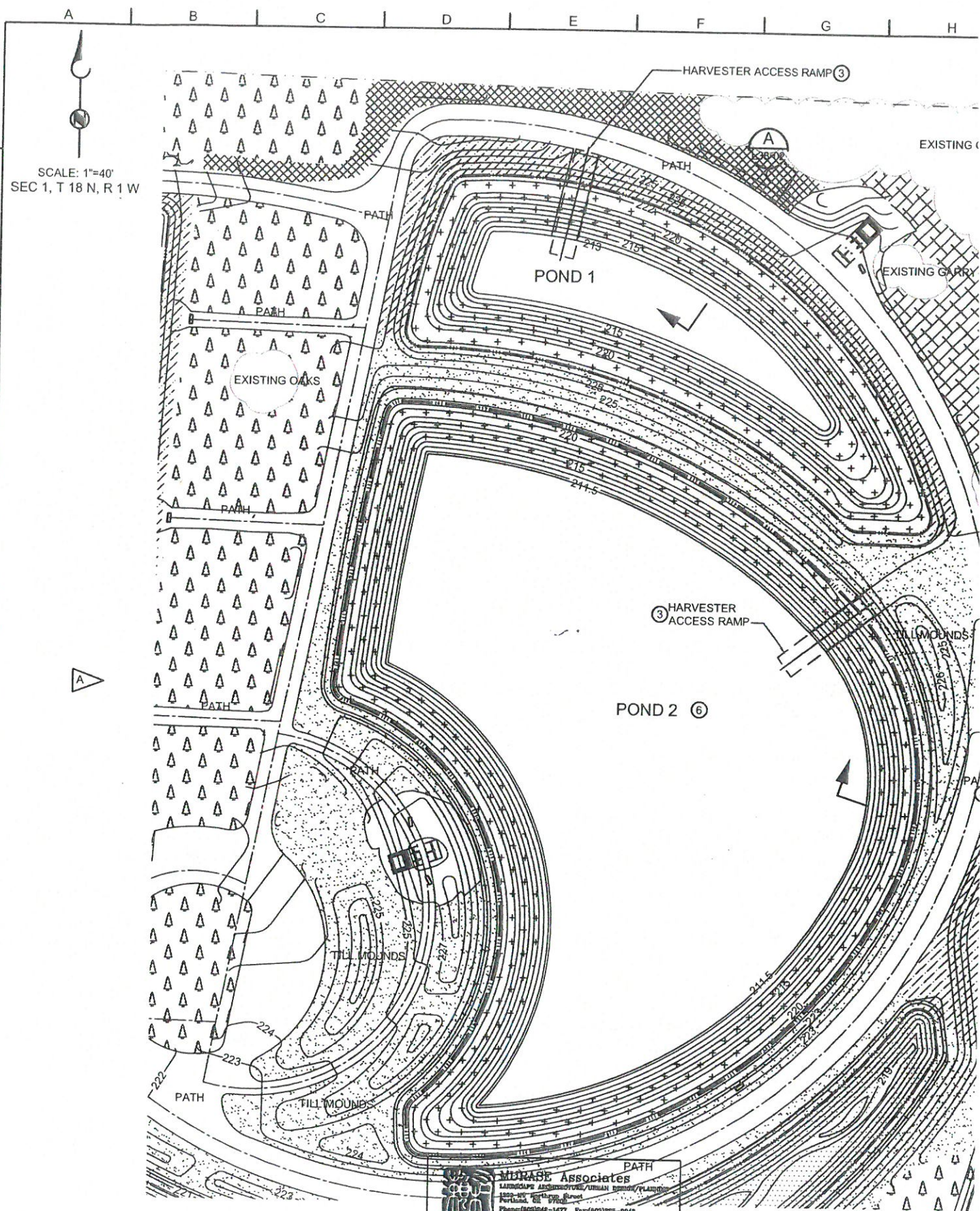
To the fullest extent permissible pursuant to applicable law, Thurston County disclaims all warranties, express or implied, including, but not limited to, implied warranties of merchant ability, data fitness for a particular purpose, and non-infringements of proprietary rights.

Under no circumstances, including, but not limited to, negligence, shall Thurston County be liable for any direct, indirect, incidental, special or consequential damages that result from the use of, or the inability to use, Thurston County materials.

LEGEND

- | | |
|---|--|
|  Major Roads |  Flood Zones |
|  Roads |  Water Bodies |
|  Streams |  Zoning |
|  Contours |  Cities |
|  Wetlands |  Parcels |
|  Wetland Buffers | |

Thurston GeoData Center © 2017 - Thurston County GeoData Center
 929 Lakeridge Drive SW, Suite 216, 2nd Floor
 Olympia, WA 98502-6031



SCALE: 1"=40'
SEC 1, T 18 N, R 1 W



WILKINSON Associates
 LANDSCAPE ARCHITECTS/PLANNERS/URBAN DESIGNERS/PLANNERS
 1800 SW Portland Street
 Portland, OR 97201
 Phone: (503) 246-1477 Fax: (503) 255-0642
 Email: wilkinson@wilkinson.com

BROWN AND CALDWELL
CONSULTANTS
 OLYMPIA, WASHINGTON

SUBMITTED: _____ DATE: _____
 PROJECT MANAGER
 APPROVED: _____ DATE: _____
 BROWN AND CALDWELL
 APPROVED: _____ DATE: _____

LINE IS 2 INCHES
 AT FULL SIZE
 (IF NOT 2" SCALE ACCORDINGLY)

FILE 21674-138-02 DWG

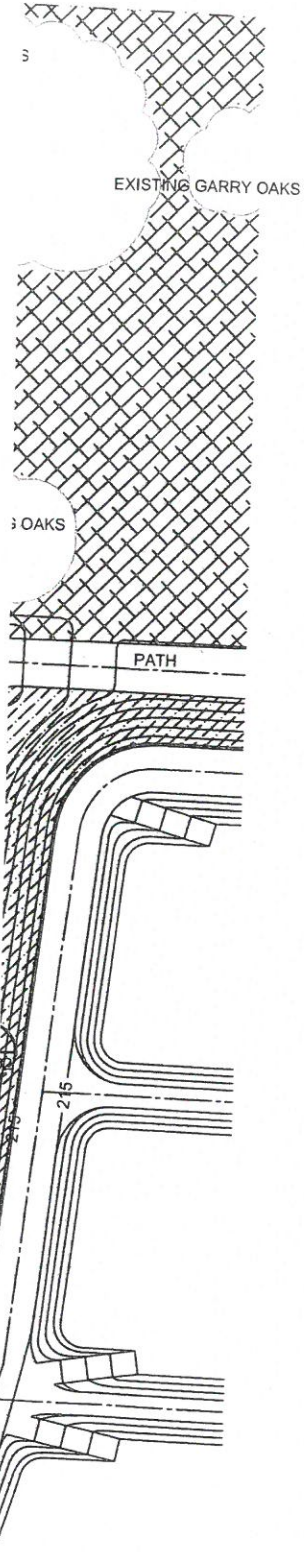
DRAWN AS
 DESIGNED RKM
 CHECKED JFD
 CHECKED GAH

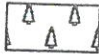


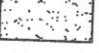

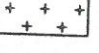
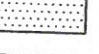
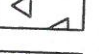

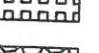

CONFORMED DOCUMENT

THIS DOCUMENT WAS COMPILED FROM ALL BID PERIOD INFORMATION RELATIVE TO THIS SHEET. THE ENGINEER IS NOT RESPONSIBLE FOR THE ACCURACY OF THE INFORMATION CONTAINED HEREIN. THE ORIGINAL BID DOCUMENTS ARE THE CONTRACTUAL DOCUMENTS FOR THIS PROJECT AND IT IS THE RESPONSIBILITY OF THE CONTRACTOR TO UPDATE THOSE DOCUMENTS AS NECESSARY TO KEEP AN ACCURATE RECORD OF THE CONSTRUCTION.

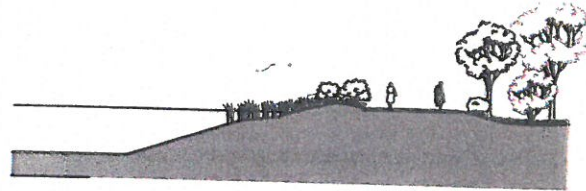
ZONE	REV.	DESCRIPTION
A		RECORD DRAWING
		REVISIONS

PLANTING LEGEND:

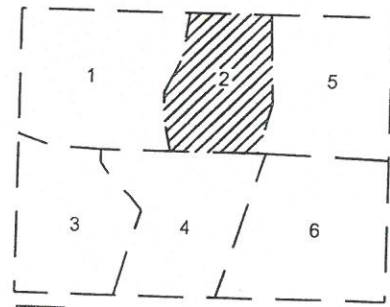
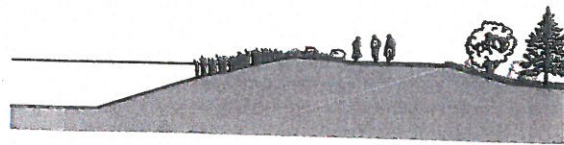



-  EXISTING FIR FOREST PROTECTION.
-  EXISTING OAK FOREST PROTECTION.
-  MIXED-STAND EVERGREEN/DECIDUOUS.
-  PRAIRIE / TILL MOUND PLANTING.
-  SHORE AREA PLANTING.
-  WETLAND PONDS 1 AND 2 PLANTING
-  WETLAND POND 3 PLANTING
-  WETLAND PONDS 4 AND 5 SHELF PLANTING
-  WETLAND PONDS 4 AND 5 - WATER LILY
-  MIXED-STAND EVERGREEN
-  ROCKERY

SECTION THRU
POND 1
SECTION **A**
L38-02
NO SCALE



SECTION THRU
POND 2
SECTION **B**
L38-02
NO SCALE



 AREA SHOWN ON THIS PLAN
KEY PLAN
NO SCALE

APPROVED FOR CONSTRUCTION
FOR THE CITY OF LACEY
BY: _____ DATE: _____
DIRECTOR OF PUBLIC WORKS
Approval Expires Two Years From Above Date



**HAWKS PRAIRIE
RECLAIMED
WATER
SATELLITE**

WETLAND PONDS/RECHARGE BASINS - PHASE I

LANDSCAPING
WETLAND PONDS
SITE PLANTING PLAN - 2

OCTOBER 2002

DRAWING NUMBER

L38-02

SHEET NUMBER

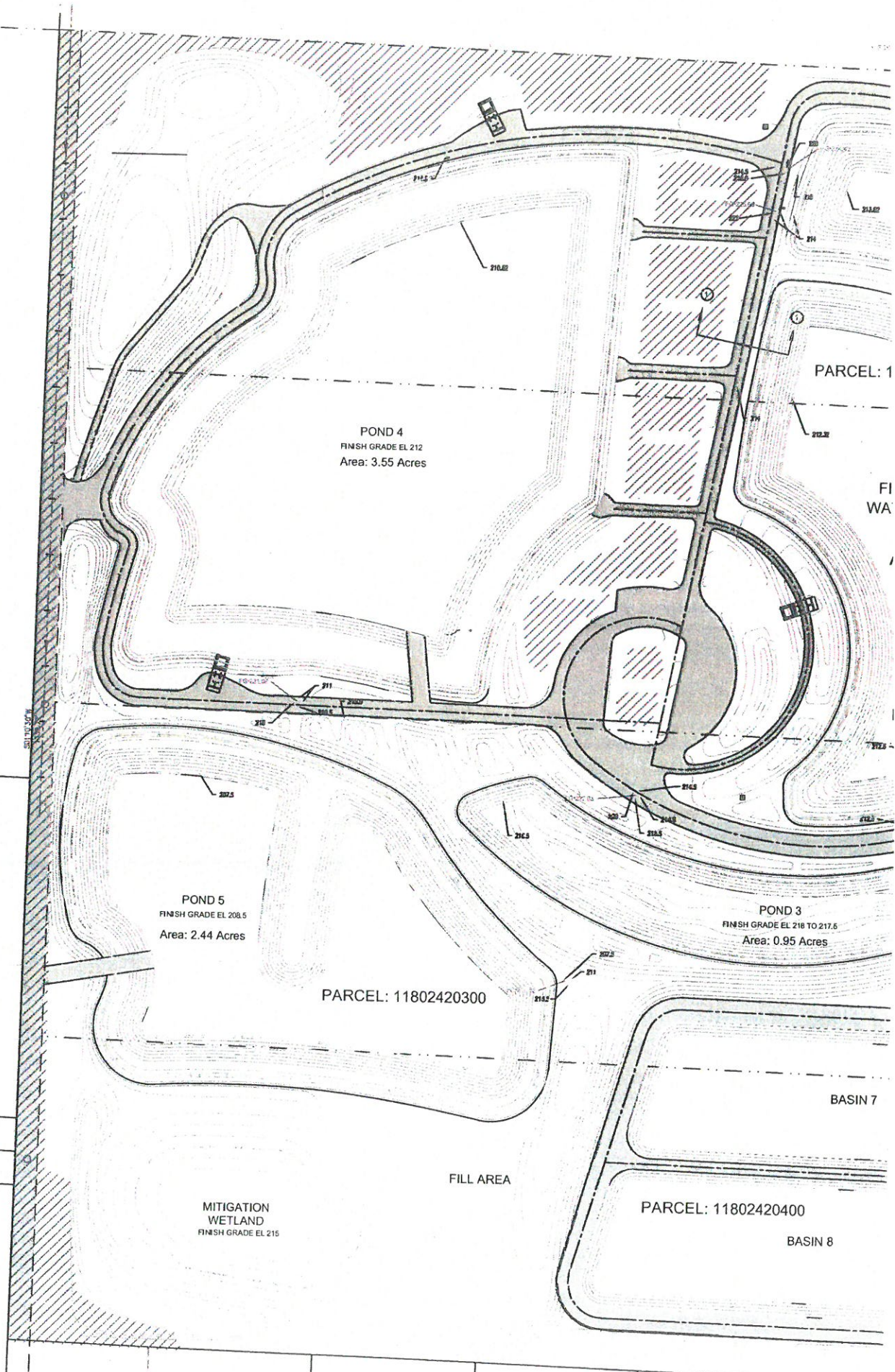
SCALE: 1"=60'
SEC 1, T 18 N, R 1 W

WKS PRAIRIE
INDUSTRIAL PARK

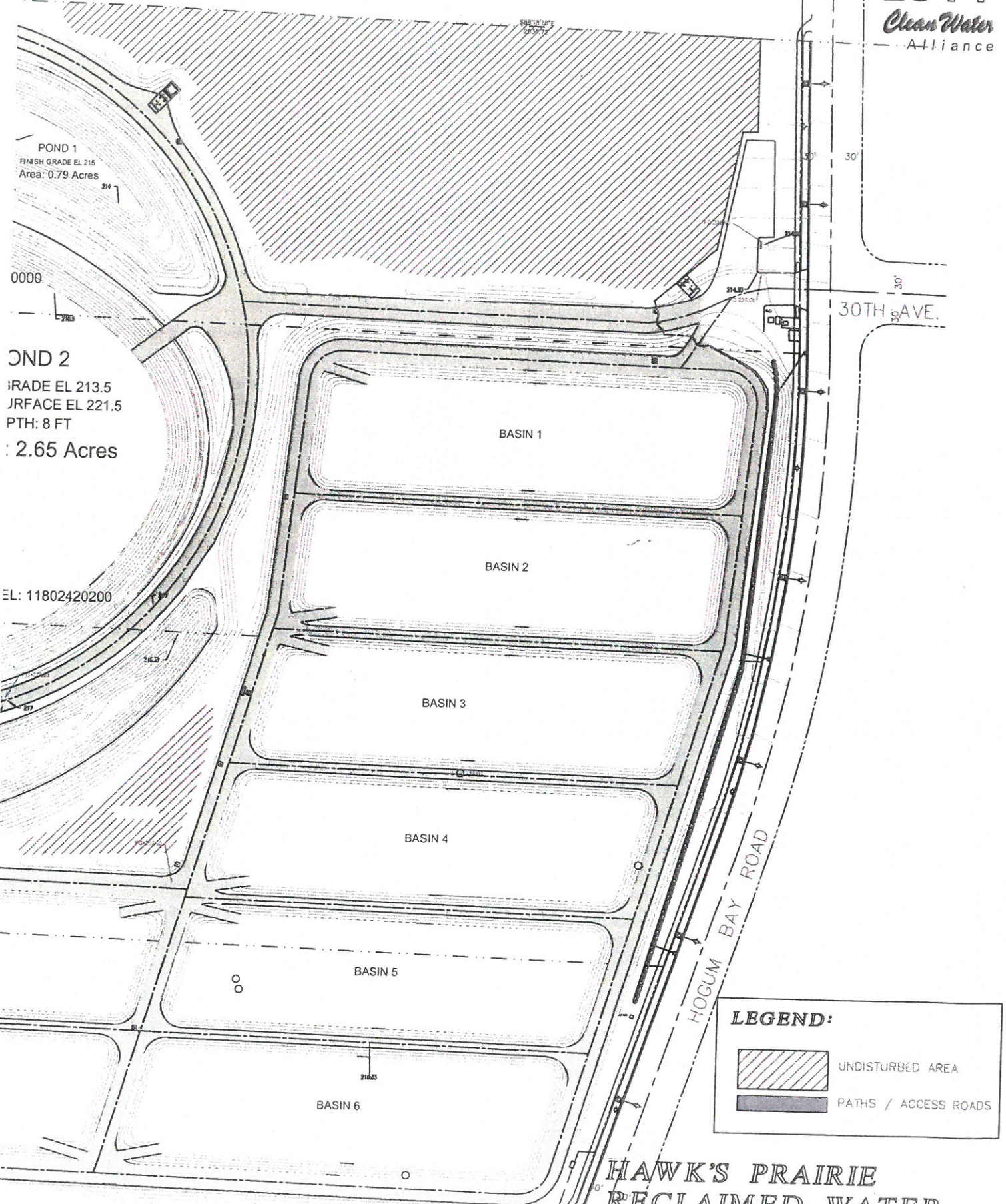
AVE. NE 29th Ave.

WKS PRAIRIE
INDUSTRIAL PARK

DATE: 5/16/17



CV 38-004



POND 1
FINISH GRADE EL 215
Area: 0.79 Acres

POND 2
FINISH GRADE EL 213.5
SURFACE EL 221.5
PTH: 8 FT
Area: 2.65 Acres

30TH AVE.

HOGUM BAY ROAD

BASIN 1

BASIN 2

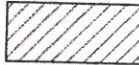

BASIN 3

BASIN 4

BASIN 5

BASIN 6

LEGEND:

-  UNDISTURBED AREA
-  PATHS / ACCESS ROADS

HAWK'S PRAIRIE RECLAIMED WATER WETLAND PONDS AND RECHARGE BASINS