



WASHINGTON DEPARTMENT OF FISH AND WILDLIFE

OAK CREEK WLA - COWICHE UNIT ELK FENCE REPLACEMENT YA:R101:17-1

INDEX

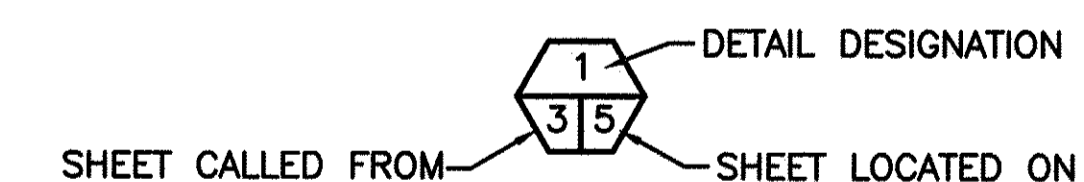
SHEET NO.

1. COVER SHEET
2. LOCAL, STATE, & VICINITY MAP
3. OVERALL SITE PLAN
4. SITE 1 AND ALTERNATE BID SITE 2
5. METAL FENCE DETAILS 1
6. METAL FENCE DETAILS 2
7. MISCELLANEOUS METAL FENCE DETAILS
8. WOODEN FENCE DETAILS 1
9. WOODEN FENCE DETAILS 2
10. WOODEN FENCE DETAILS 3

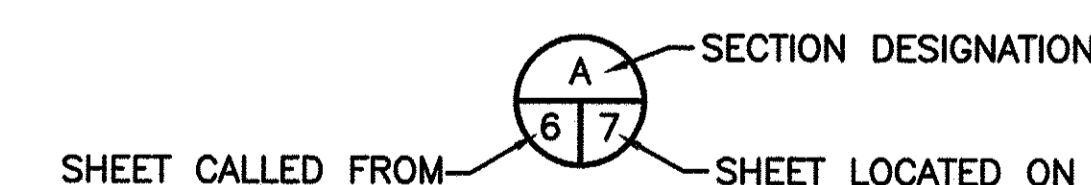
ABBREVIATIONS

APPROX	-	APPROXIMATELY
DIA	-	DIAMETER
GA	-	GAUGE
GALV	-	GALVANIZED
GPS	-	GLOBAL POSITIONING SYSTEM
OD	-	OUTSIDE DIAMETER
PT	-	PRESSURE TREATED
RD	-	ROAD
REQ'D	-	REQUIRED
R/R	-	REMOVE AND REPLACE
SPEC'S	-	PROJECT SPECIFICATIONS
TYP	-	TYPICAL

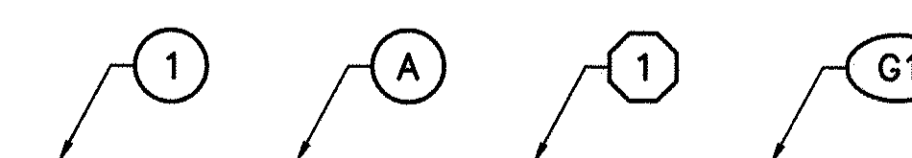
SHEET SYMBOLS



DETAIL



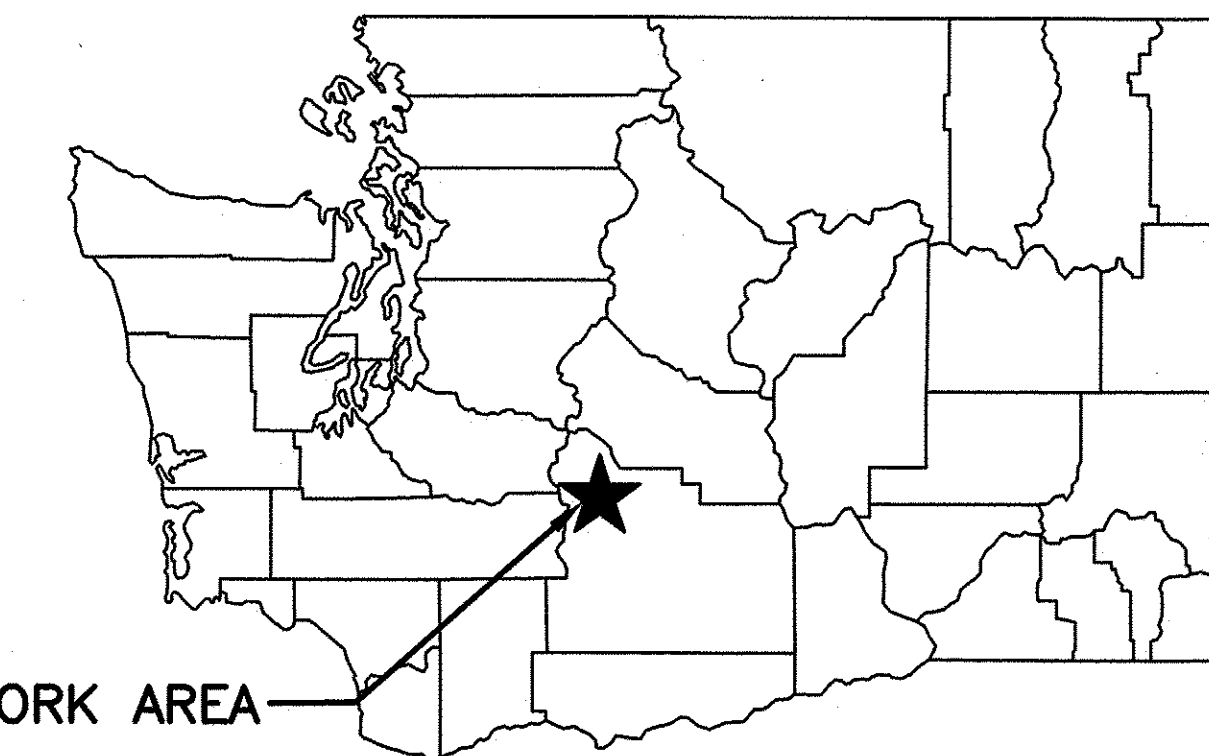
SECTION



NOTE REFERENCE

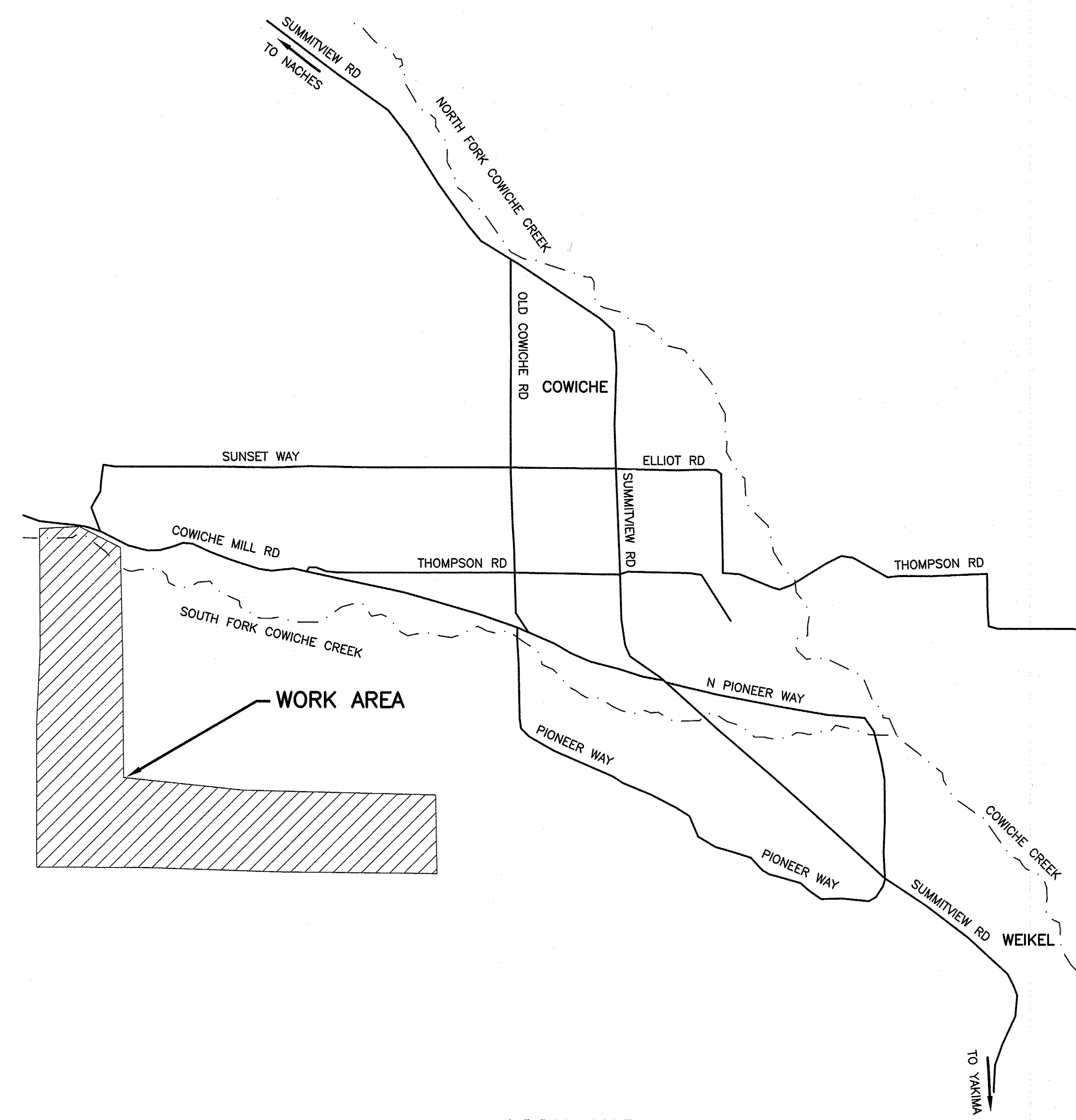
REFERENCE DESIGNATION TO NOTE
OR A PART OR MATERIAL IN A
SCHEDULE/TABLE

PROJECT NO. YA:R101:17-1	
SHEET	OF
1	10

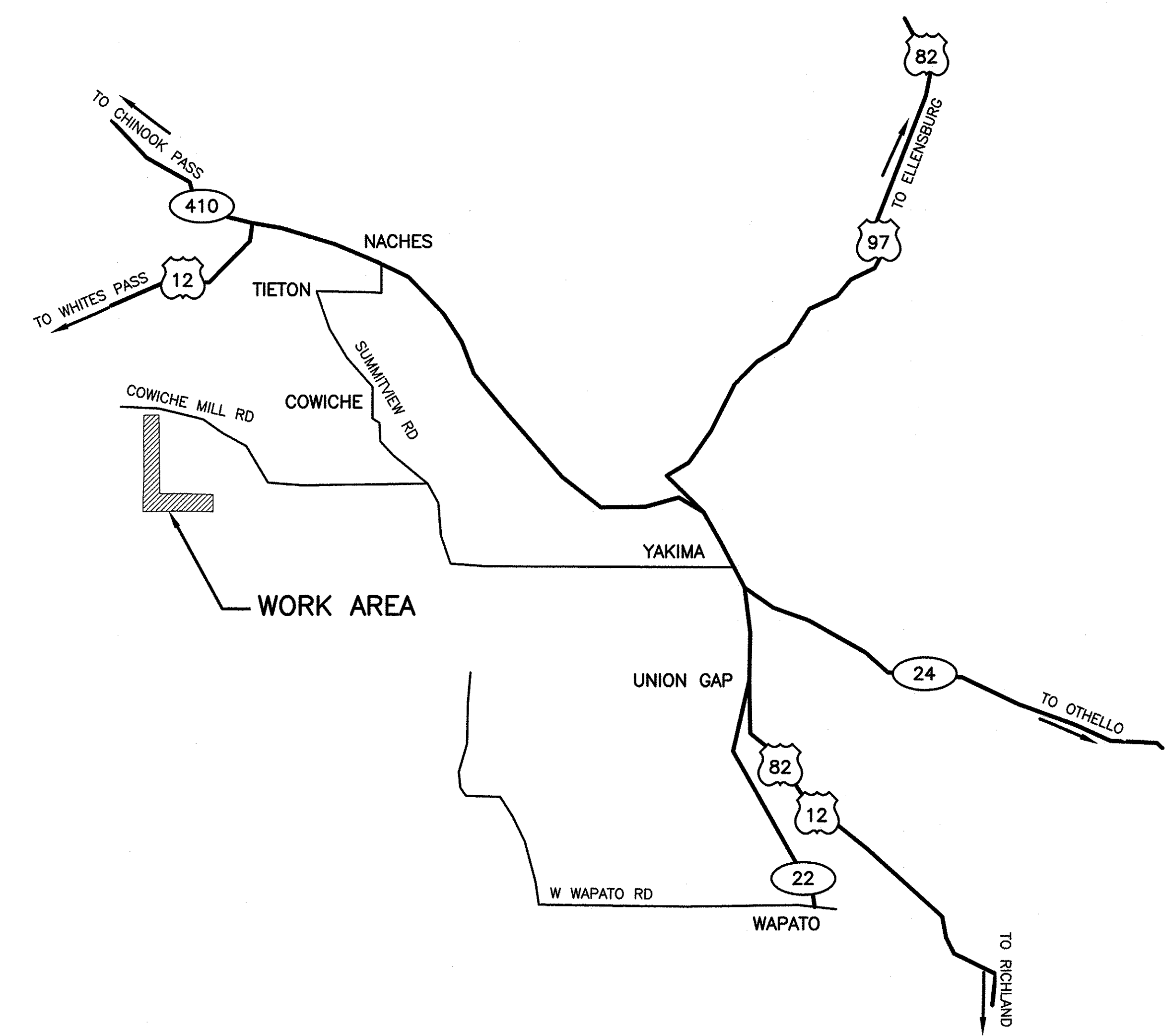


OAK CREEK WORK AREA

STATE MAP
NOT TO SCALE

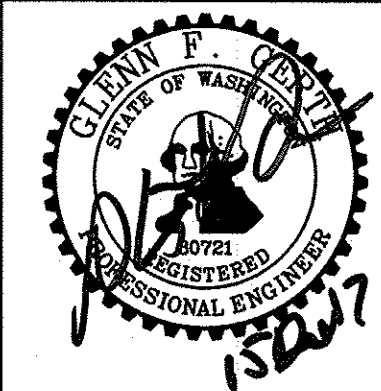


LOCAL MAP
NOT TO SCALE



VICINITY MAP
NOT TO SCALE

WASHINGTON STATE
DEPARTMENT OF FISH AND WILDLIFE



SYM	DATE	REVISION DESCRIPTION	BY
		APPROVED AND RELEASED FOR CONSTRUCTION	
		CHIEF ENGINEER	<i>[Signature]</i>
		DATE: 12-15-2017	
		PROGRAM	
		DATE: 12-15-2017	

0 1"
BAR MEASURES
ONE INCH ON
ORIGINAL DRAWINGS

DESIGNED BY
CHECKED BY D. SMITH
DRAWN BY S. ASHLER
DATE 12-15-2017

OAK CREEK WLA - COWICHE UNIT
ELK FENCE REPLACEMENT
LOCAL, STATE, AND VICINITY MAP

PROJECT NO.
YA:R101:17-1

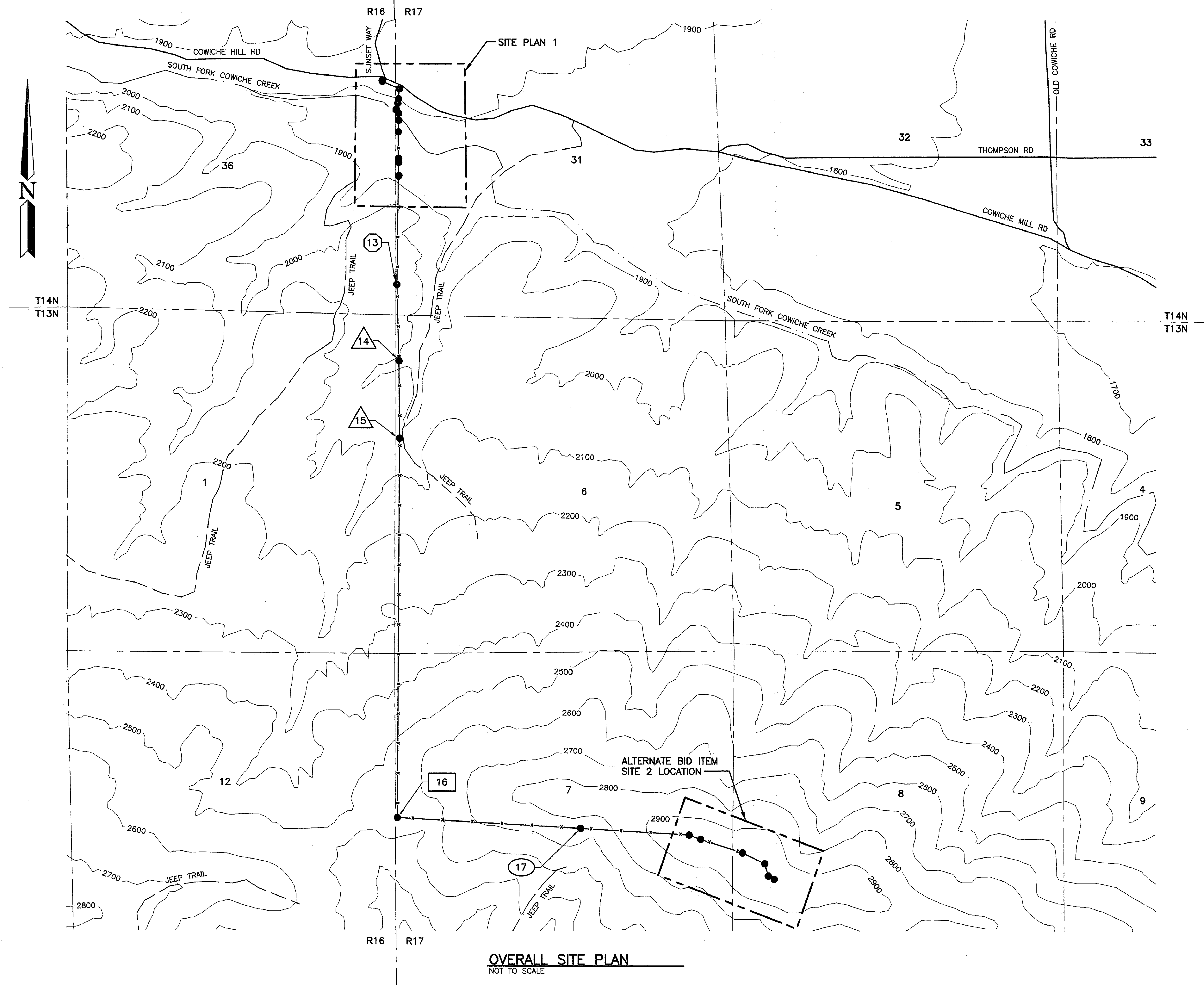
SHEET	OF
2	10

MAIN FENCE GPS LOCATIONS

POINT	REMARKS	LATITUDE	LONGITUDE
13	ELK RETURN	N46 39 08.6	W120 45 44.3
14	DRY CREEK BED	N46 38 56.5	W120 45 44.0
15	DRY CREEK BED	N46 38 44.5	W120 45 44.2
16	CORNER, ELK RETURN, ACCESS GATE	N46 37 45.0	W120 45 44.4
17	START OF REPAIRED FENCE (2015)	N46 37 43.4	W120 45 02.8
POSSIBLE END OF CONTRACT			

NOTE:

1. FENCE LENGTH IS 3 MILES
2. MAX. 12 FEET WIDE TRAVEL CORRIDOR ALONG INSIDE OF FENCE LINE.
3. CONSTRUCT FENCE ALONG OLD FENCE ALIGNMENT

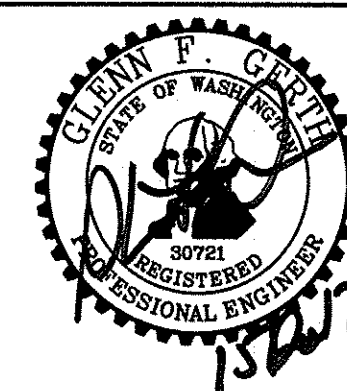


LEGEND

- CONTOUR LINE
- JEEP TRAIL
- COUNTY ROAD
- CREEK/STREAM
- SECTION LINE
- ELK FENCE
- DENOTES POINT ON PLAN
- DENOTES GATE ON PLAN
- STREAM CROSSING
- ELK RETURN

OVERALL SITE PLAN
NOT TO SCALE

WASHINGTON STATE
DEPARTMENT OF FISH AND WILDLIFE



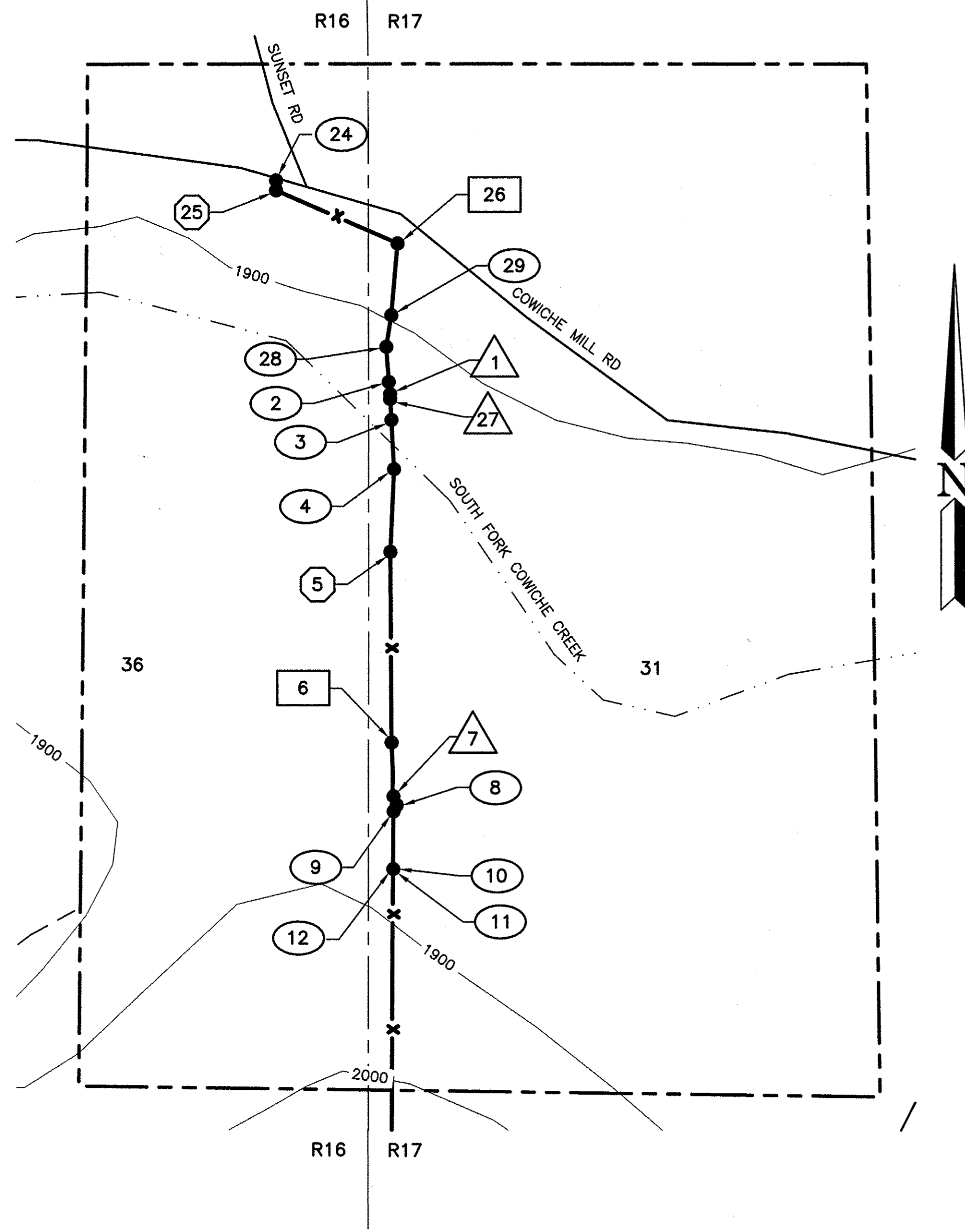
SYM	DATE	REVISION DESCRIPTION	BY
APPROVED AND RELEASED FOR CONSTRUCTION			
CHIEF ENGINEER	<i>S. Ashler</i>	DATE: 12/15/17	
PROGRAM		DATE: 12/15/2017	

0" = 1"
BAR MEASURES
ONE INCH ON
ORIGINAL DRAWINGS

OAK CREEK WLA - COWICHE UNIT
ELK FENCE REPLACEMENT
OVER ALL SITE PLAN

PROJECT NO.
YA:R101:17-1

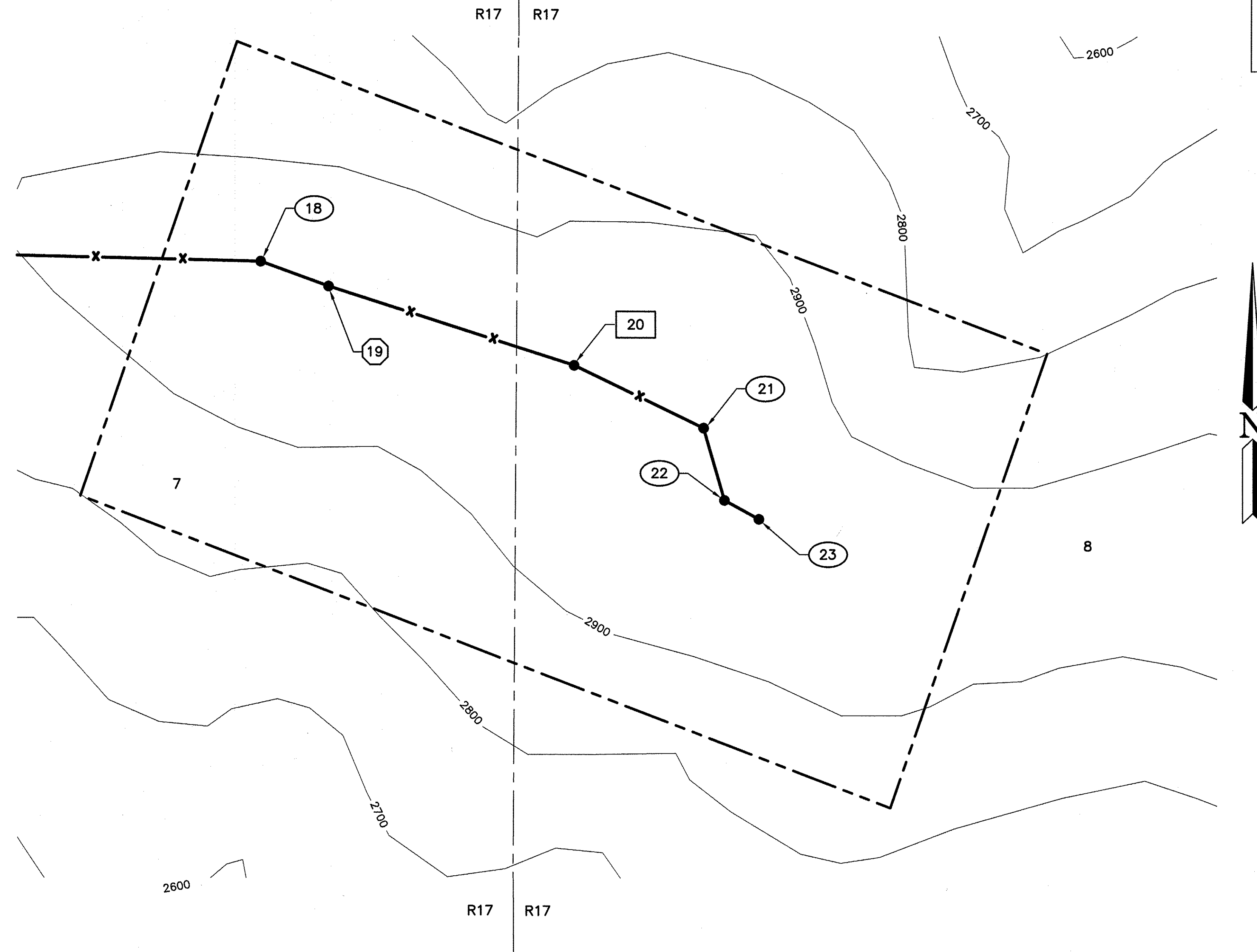
SHEET OF
3 10



SITE PLAN 1
NOT TO SCALE

SITE 1 GPS LOCATIONS

POINT	REMARKS	LATITUDE	LONGITUDE
24	CATTLE GUARD	N46 39 40.7	W120 45 47.9
25	ELK RETURN	N46 39 40.5	W120 45 47.8
26	CORNER, ACCESS GATE (FLIP STYLE)	N46 39 39.5	W120 45 44.0
27	SOUTH FORK COWICHE CREEK N. BANK	N46 39 35.9	W120 45 44.0
28	POINT	N46 39 37.2	W120 45 43.9
29	POINT	N46 39 37.7	W120 45 44.1
1	SOUTH FORK COWICHE CREEK S. BANK	N46 39 36.0	W120 45 44.2
2	POINT	N46 39 36.3	W120 45 44.4
3	POINT	N46 39 35.3	W120 45 44.0
4	POINT	N46 39 34.3	W120 45 44.2
5	ELK RETURN	N46 39 32.6	W120 45 44.2
6	ACCESS GATE	N46 39 28.4	W120 45 44.2
7	DRY CREEK BED	N46 39 27.8	W120 45 44.1
8	POINT	N46 39 27.7	W120 45 44.0
9	POINT	N46 39 27.7	W120 45 43.9
10	DRAW	N46 39 25.6	W120 45 43.9
11	POINT	N46 39 25.6	W120 45 43.9
12	POINT	N46 39 25.6	W120 45 43.9



SITE PLAN 2 (ALTERNATE BID ITEM)
NOT TO SCALE

SITE 2 GPS LOCATIONS

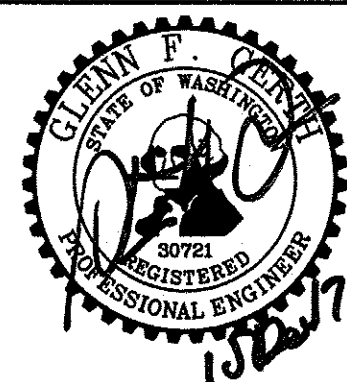
POINT	REMARKS	LATITUDE	LONGITUDE
ALTERNATE BID ITEM			
18	BEND IF FENCE	N46 37 42.4	W120 44 37.9
19	ELK RETURN	N46 37 41.7	W120 44 35.0
20	ACCESS GATE	N46 37 39.7	W120 44 25.6
21	COMM. TOWER FACILITY	N46 37 35.9	W120 44 19.7
22	COMM. TOWER FACILITY	N46 37 35.6	W120 44 18.5
23	COMM. TOWER FACILITY	N46 37 37.8	W120 44 20.6

NOTE:
1. CONSTRUCT FENCE ALONG OLD FENCE ALIGNMENT
2. POINT (26) REUSE EXISTING FLIP GATE

LEGEND

CONTOUR LINE	—————
JEEP TRAIL	- - - - -
COUNTY ROAD	—————
CREEK/STREAM	~~~~~
SECTION LINE	—————
ELK FENCE	— x —
DENOTES POINT ON PLAN	###
DENOTES GATE ON PLAN	###
STREAM CROSSING	▲
ELK RETURN	#

WASHINGTON STATE
DEPARTMENT OF FISH AND WILDLIFE



SYM	DATE	REVISION DESCRIPTION	BY
APPROVED AND RELEASED FOR CONSTRUCTION			
CHIEF ENGINEER		DATE: 12/15/2017	
PROGRAM		DATE: 12/15/2017	

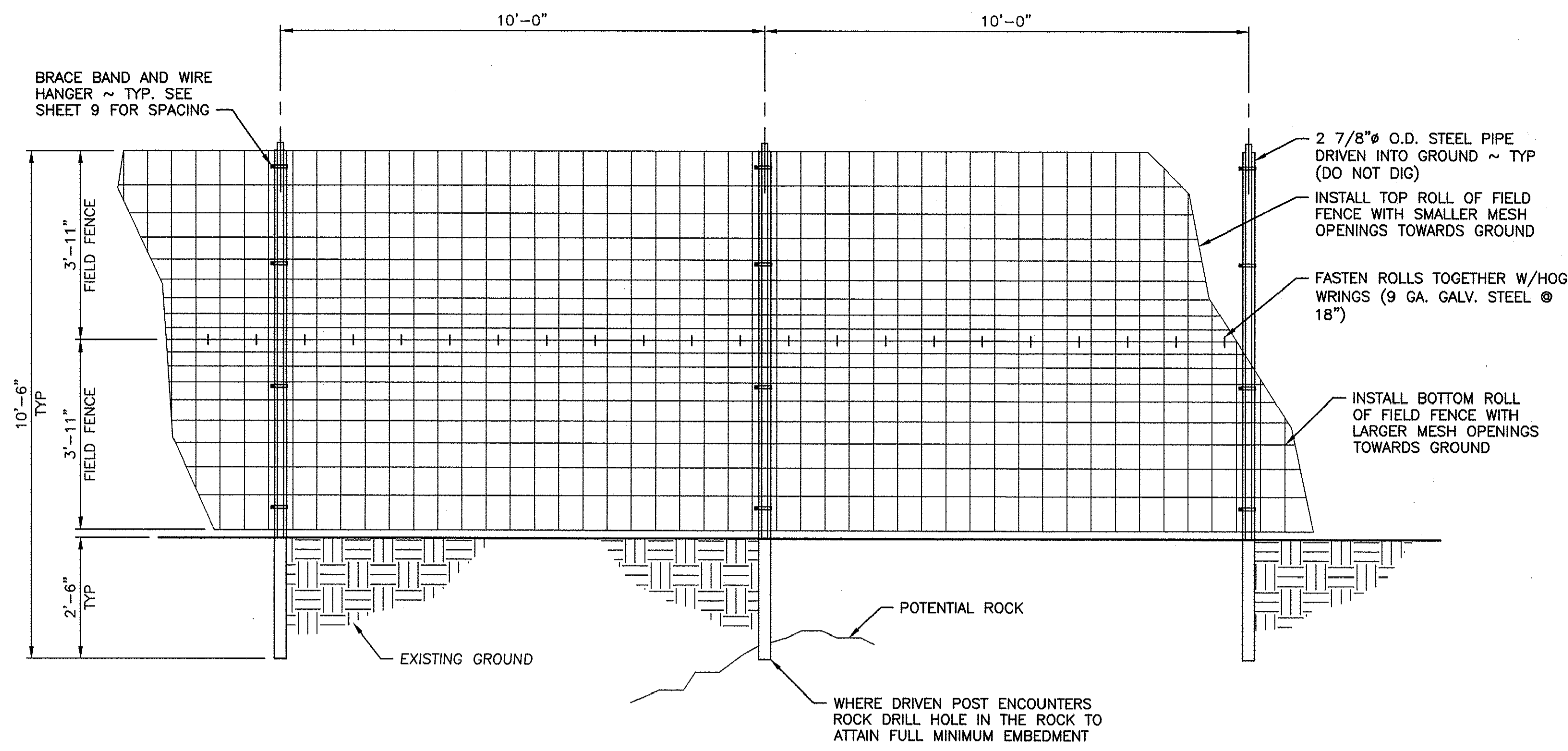
0 ——— 1"
BAR MEASURES
ONE INCH ON
ORIGINAL DRAWINGS

DESIGNED BY
CHECKED BY D. SMITH
DRAWN BY S. ASHLER
DATE 12/15/2017

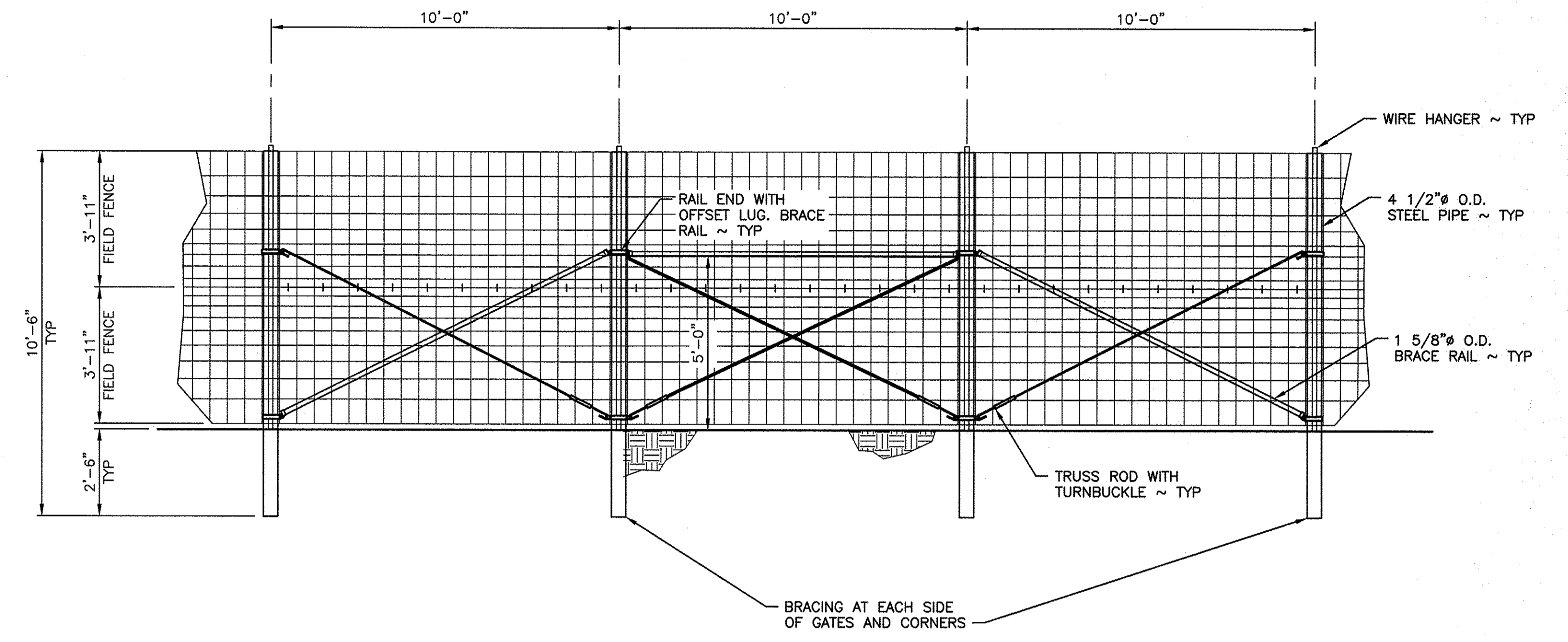
OAK CREEK WLA – COWICHE UNIT
ELK FENCE REPLACEMENT
SITE 1 AND
ALTERNATE BID SITE 2

PROJECT NO.
YA:R101:17-1

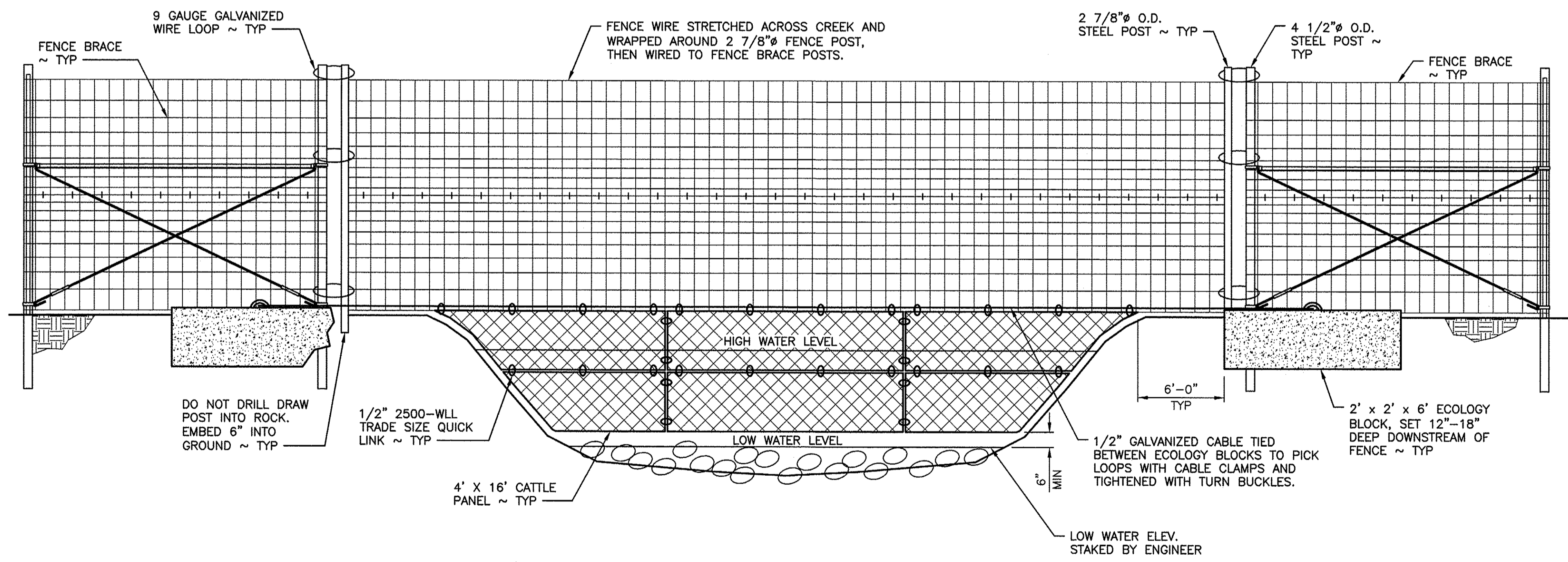
SHEET 4 OF 10



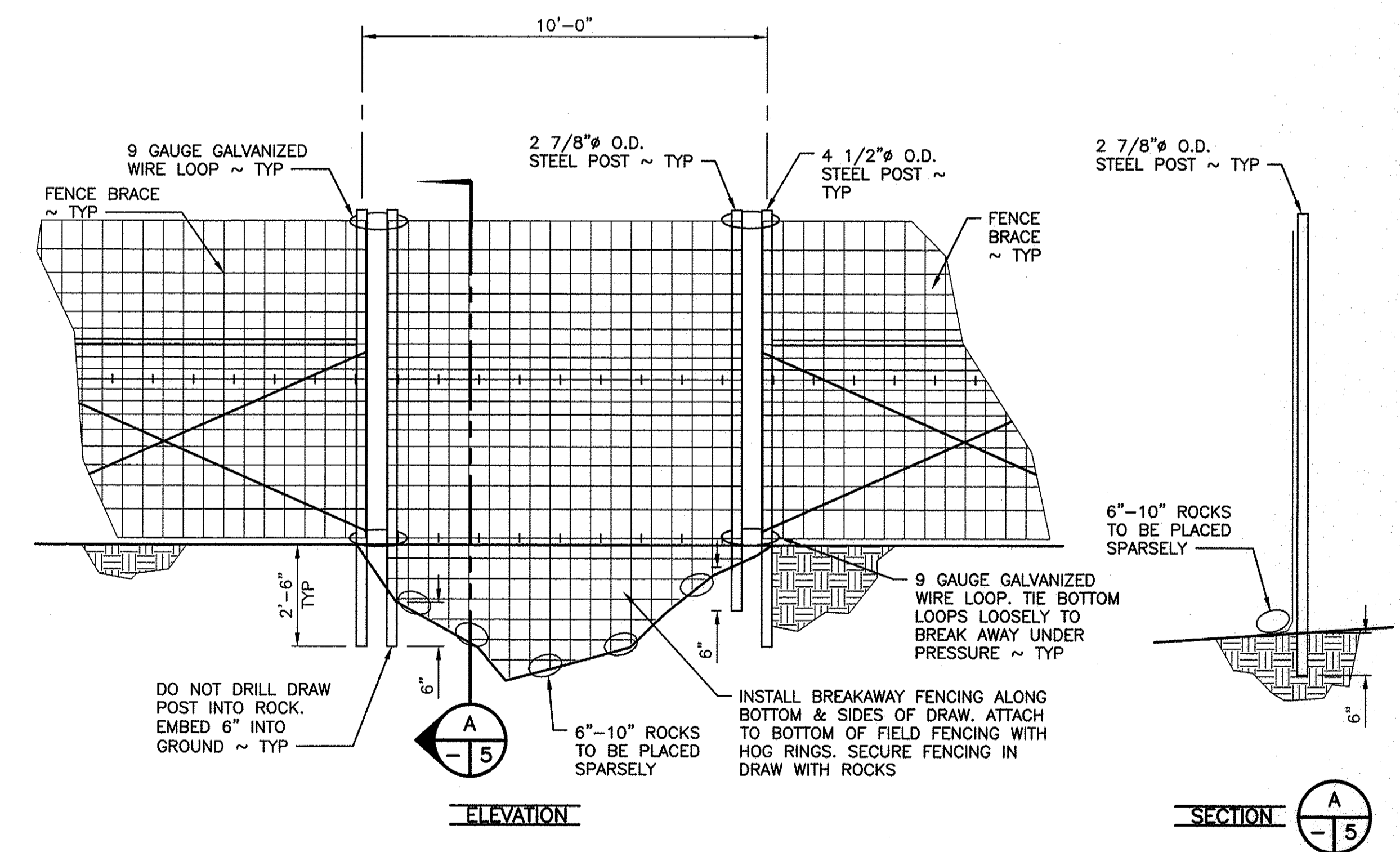
STEEL POST ELK FENCE
SCALE: 1/2" = 1'-0"



STEEL FENCE BRACE
SCALE: 3/8" = 1'-0"

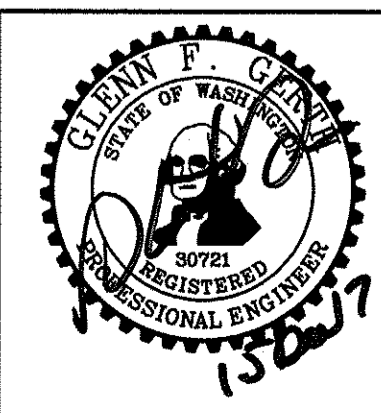


STEEL CREEK CROSSING
NOT TO SCALE



STEEL SMALL DRAW FENCE
SCALE: 3/8" = 1'-0"

WASHINGTON STATE
DEPARTMENT OF FISH AND WILDLIFE



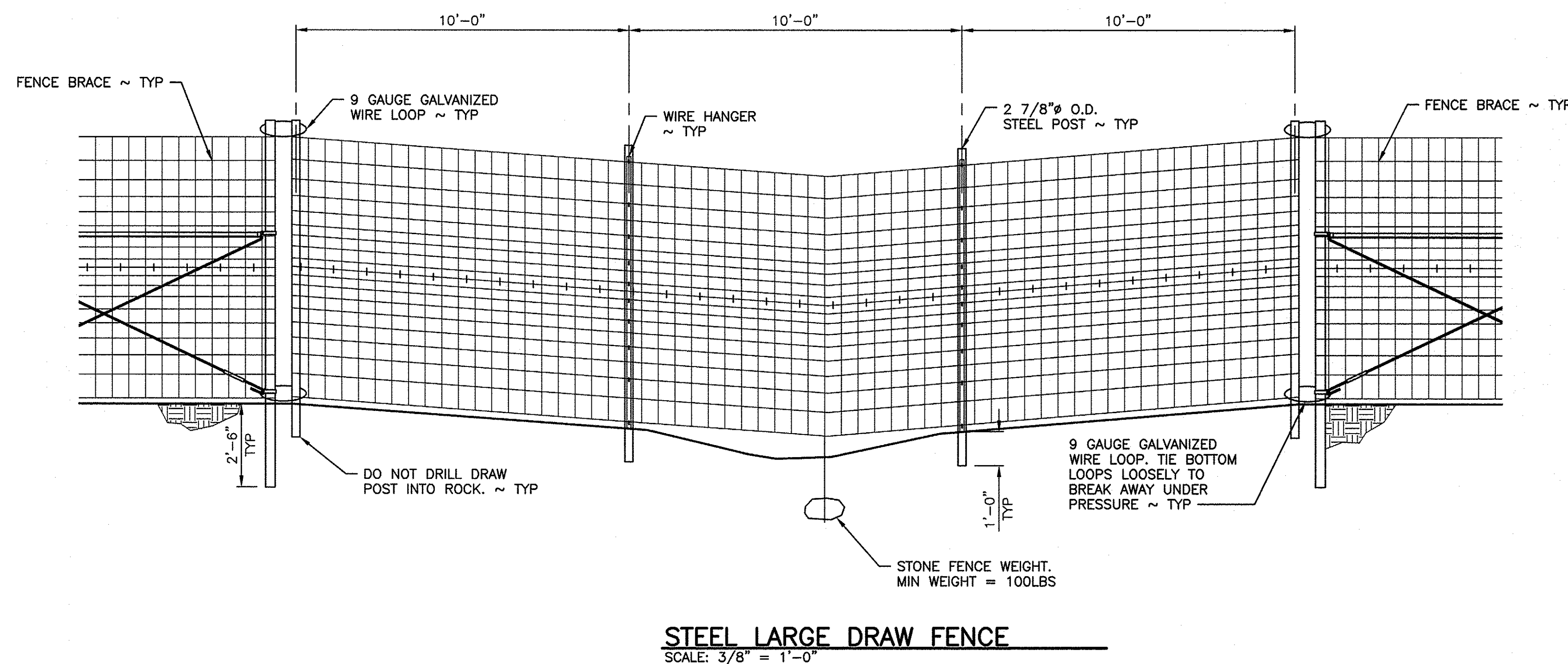
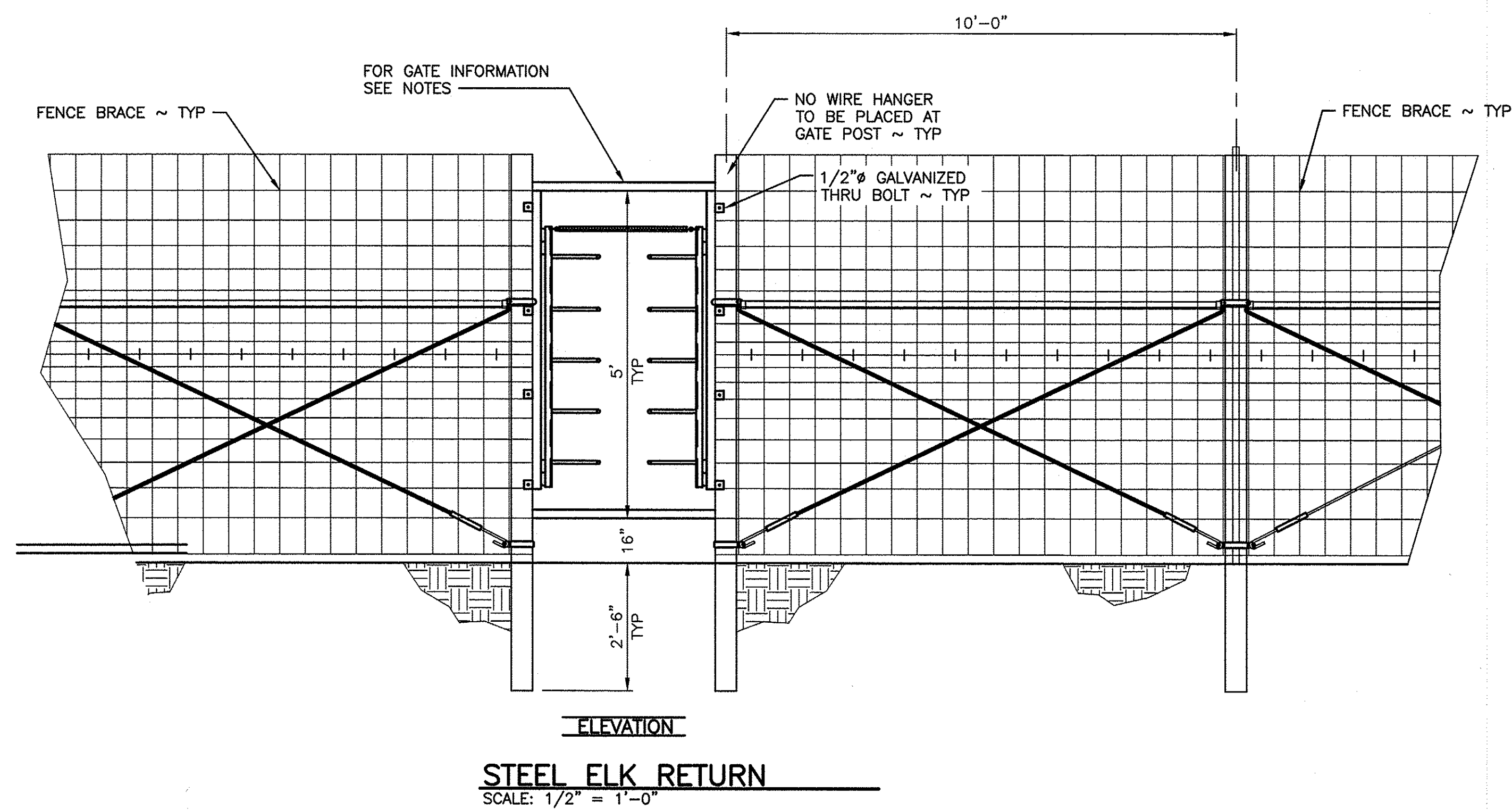
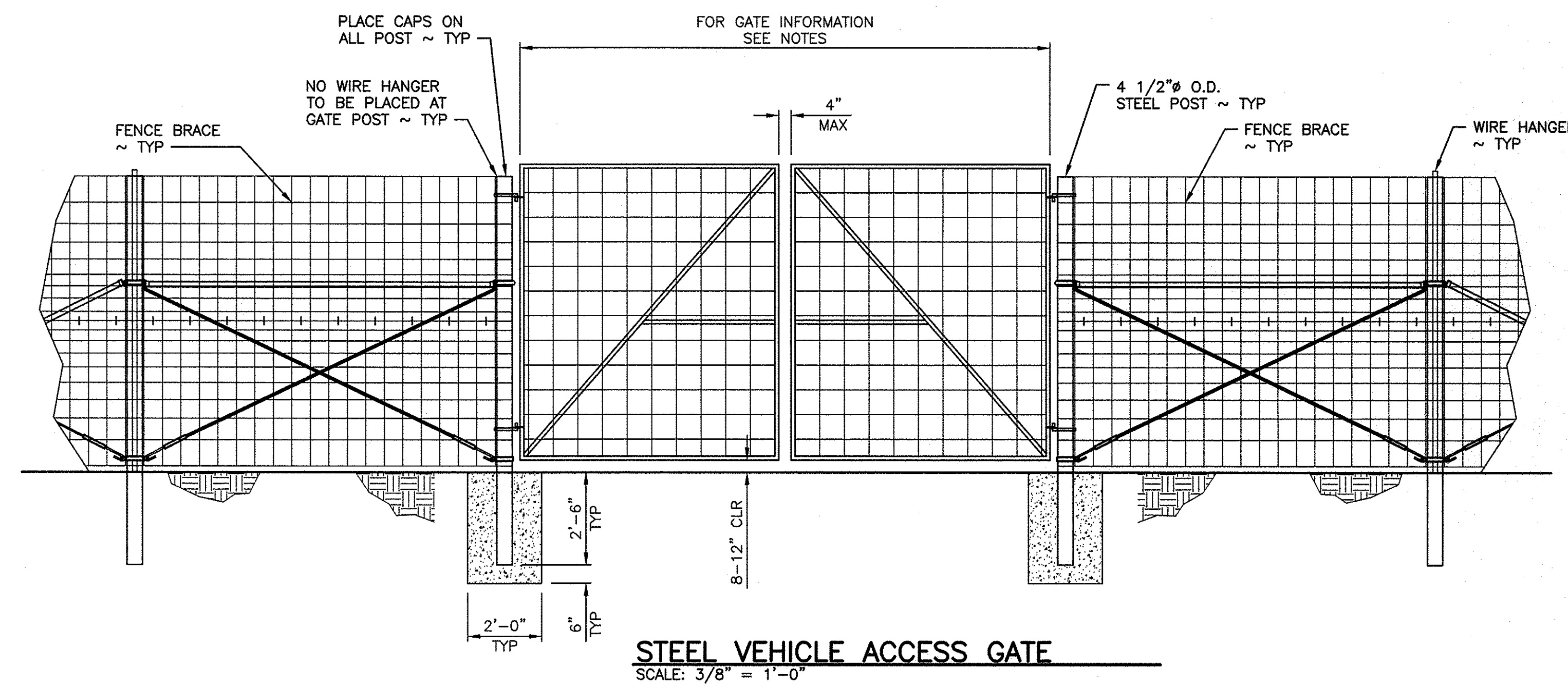
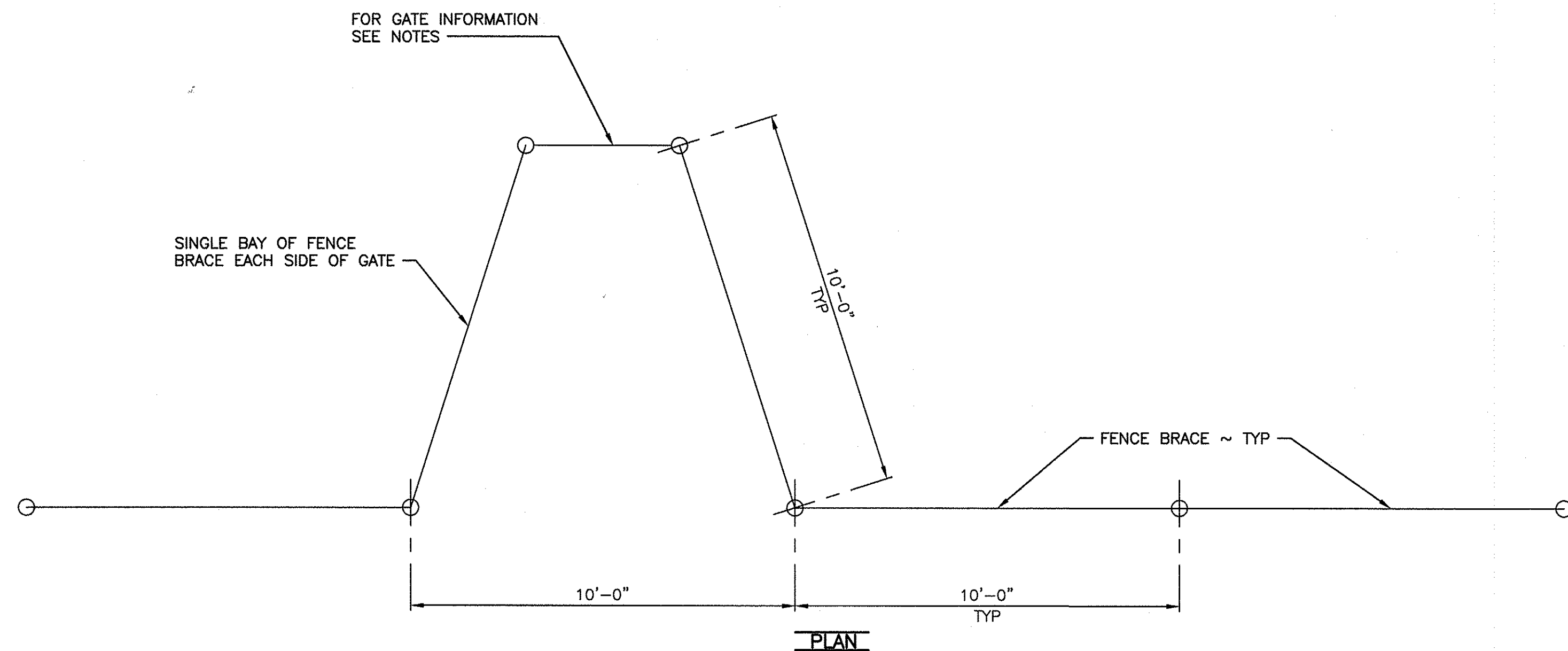
SYM	DATE	REVISION DESCRIPTION	BY
APPROVED AND RELEASED FOR CONSTRUCTION			
CHIEF ENGINEER		DATE: 1/26/17	
PROGRAM		DATE: 12-15-2017	

0 1"
BAR MEASURES
ONE INCH ON
ORIGINAL DRAWINGS

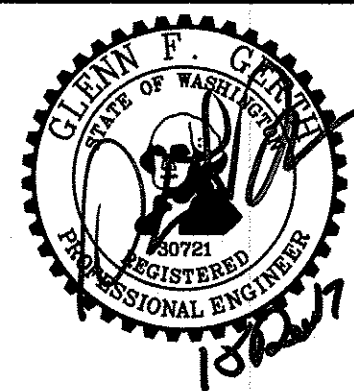
OAK CREEK WLA - COWICHE UNIT
ELK FENCE REPLACEMENT
METAL FENCE DETAILS 1

PROJECT NO.
YA:R101:17-1
SHEET 5 OF 10

- NOTE:**
- OWNER TO SUPPLY GATE. CONTRACTOR TO INSTALL.
 - GATE OPENING DIMENSIONS SHALL BE VERIFIED BEFORE CONSTRUCTION



WASHINGTON STATE
DEPARTMENT OF FISH AND WILDLIFE



SYM	DATE	REVISION DESCRIPTION	BY
APPROVED AND RELEASED FOR CONSTRUCTION			
CHIEF ENGINEER		DATE: 1/5/2017	
PROGRAM		DATE: 12-15-2017	

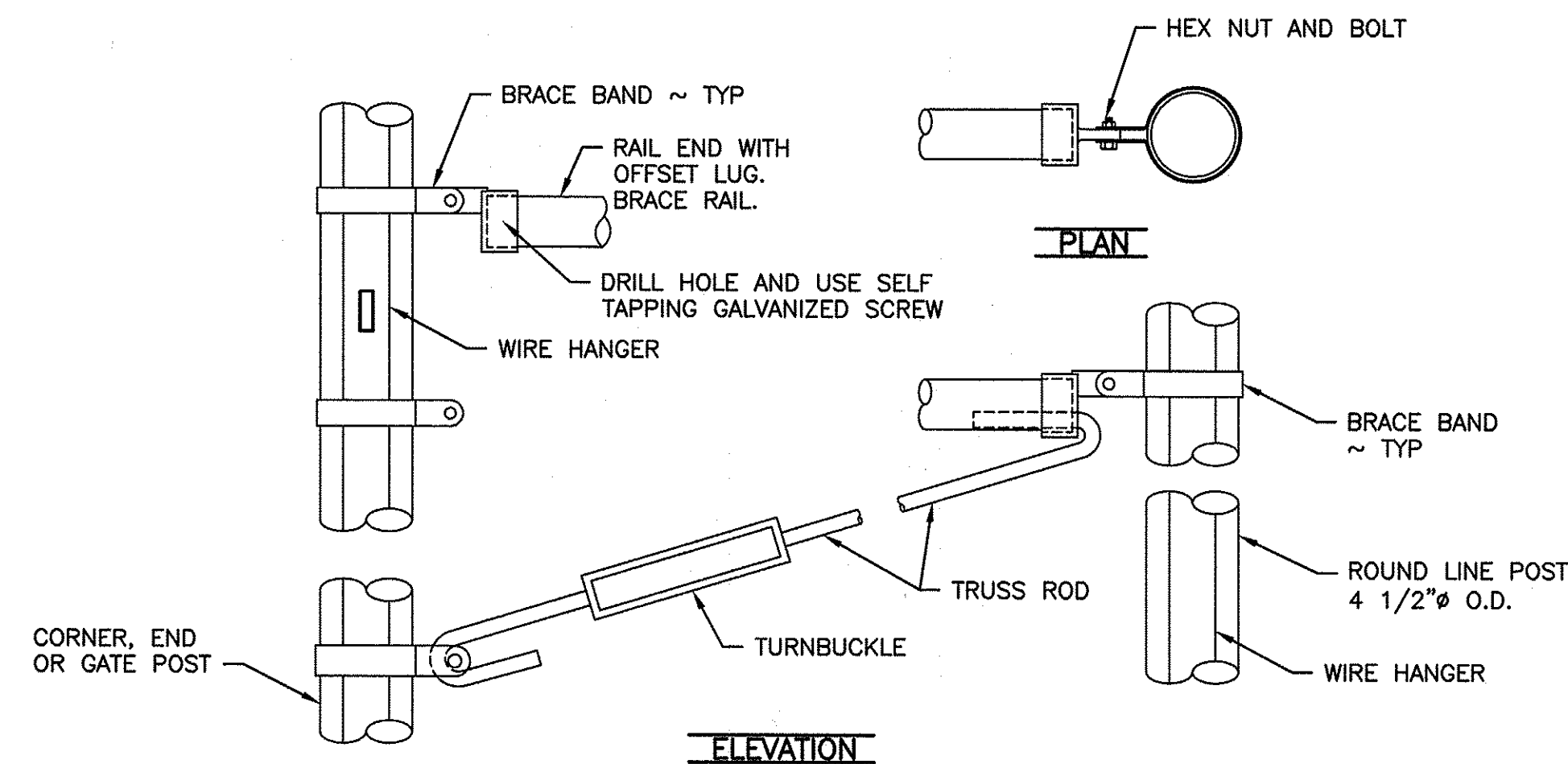
DESIGNED BY _____
CHECKED BY D. SMITH
DRAWN BY S. ASHLER

OAK CREEK WLA - COWICHE UNIT
ELK FENCE REPLACEMENT
METAL FENCE DETAILS 2

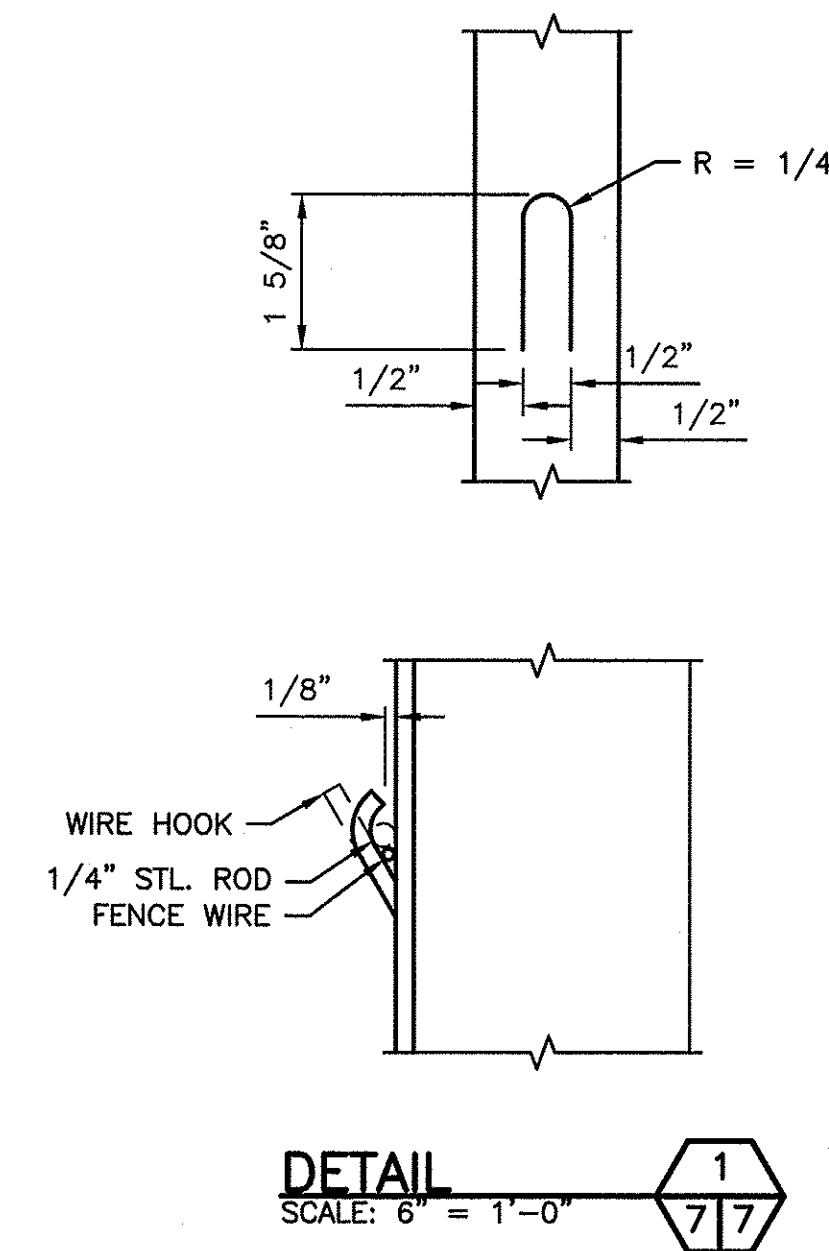
PROJECT NO.
YA:R101:17-1

SHEET	OF
6	10

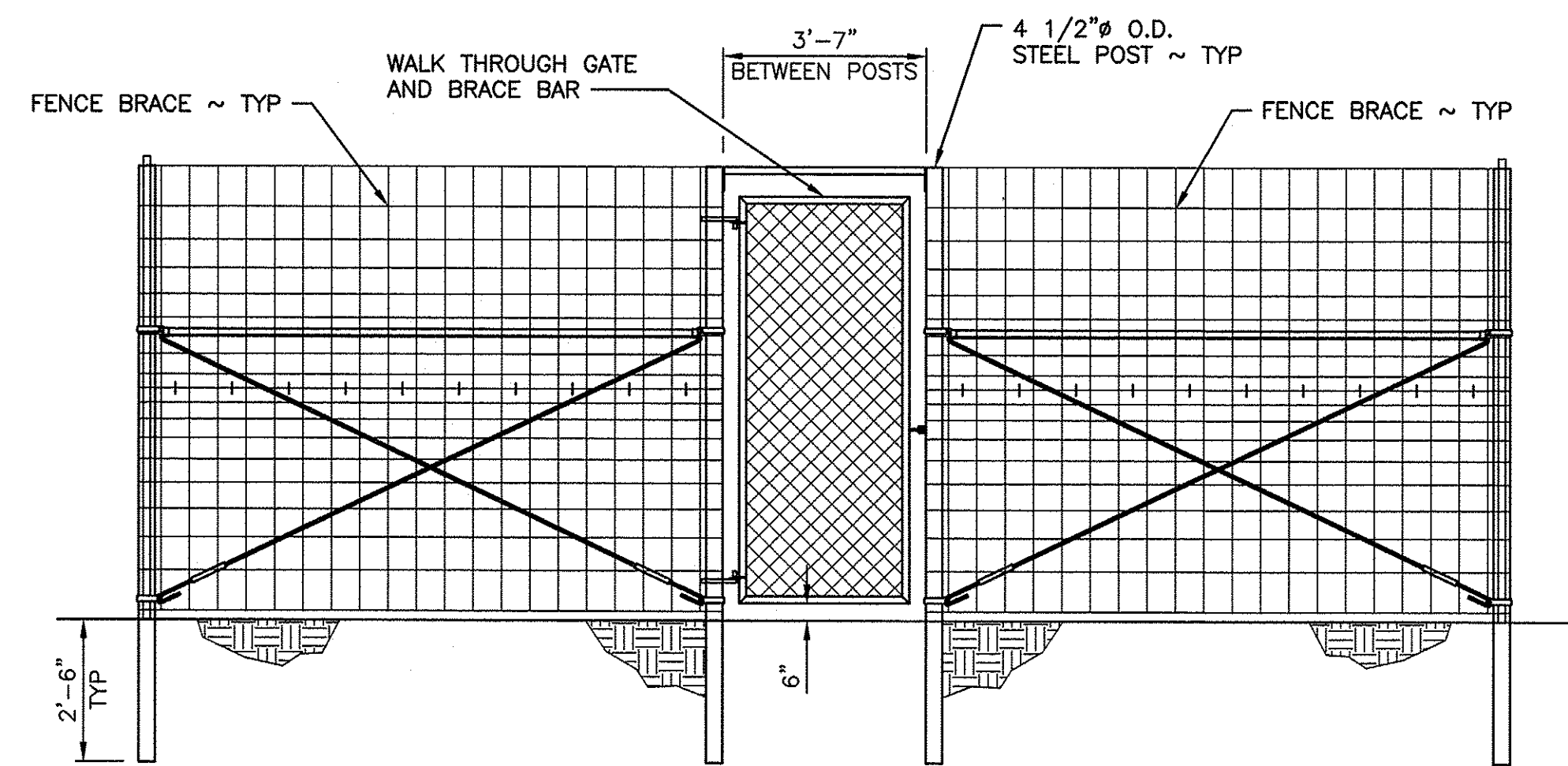
NOTE:
1. WALK THROUGH GATE AND ALL ASSOCIATED PARTS TO BE PROVIDED BY WDFW



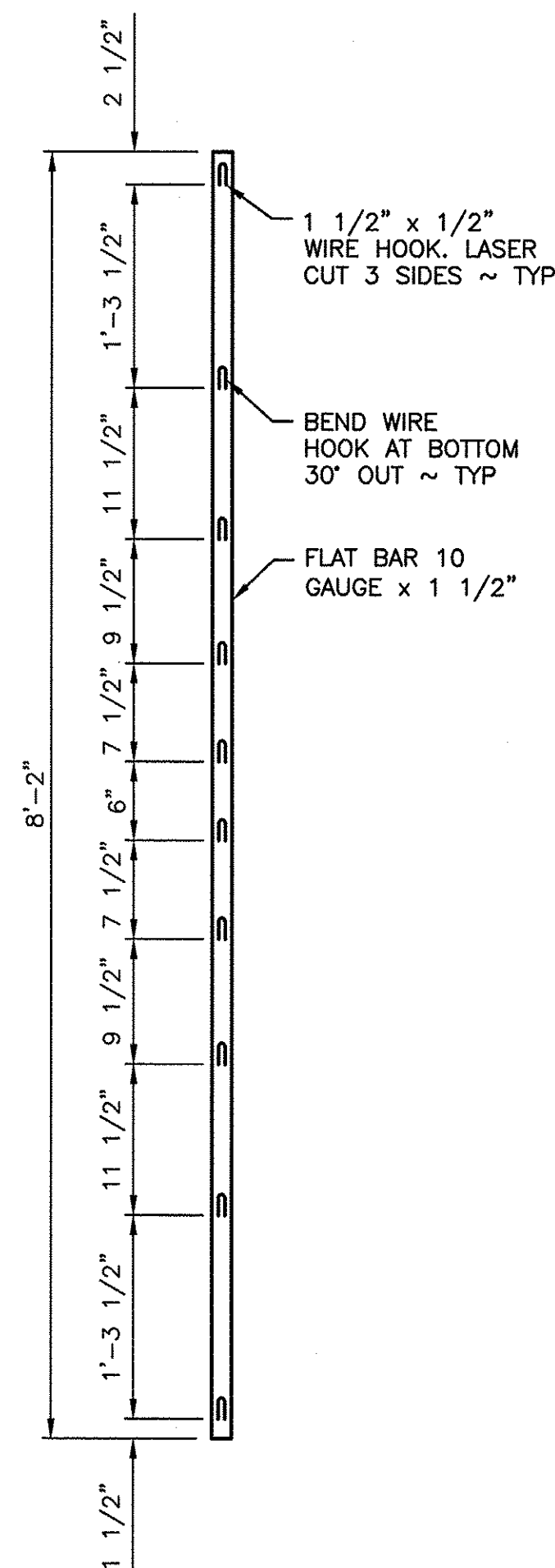
FENCE BRACE DETAIL
NOT TO SCALE



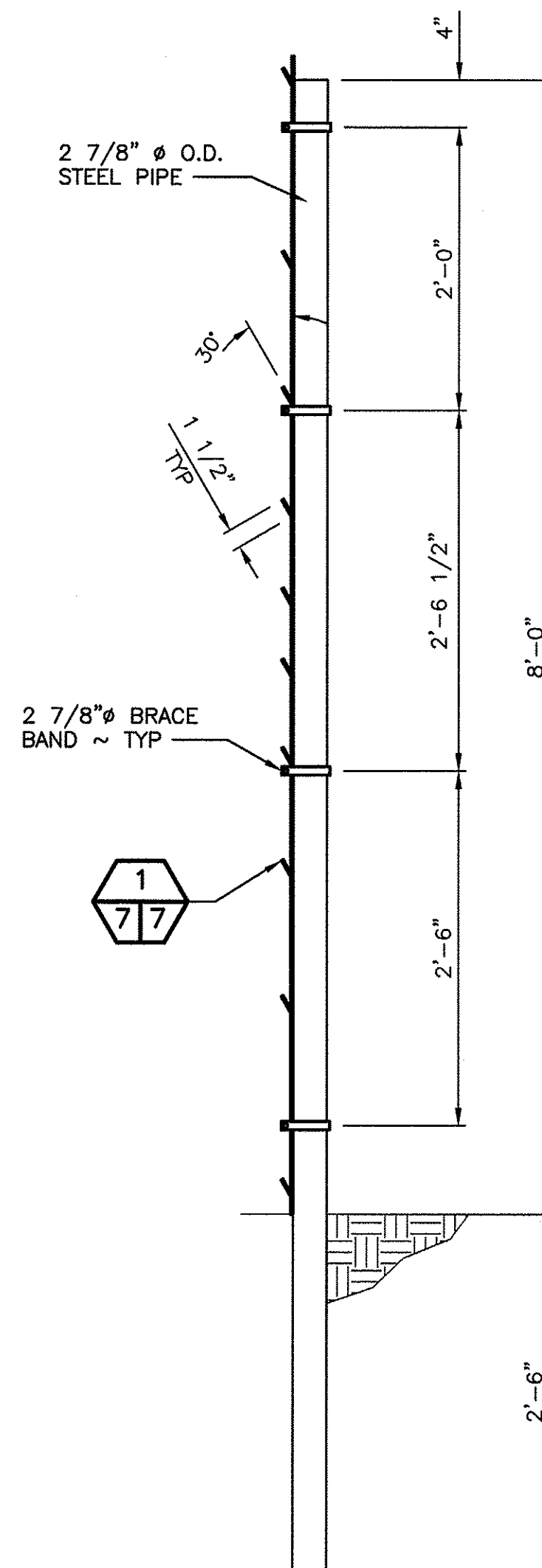
DETAIL 1
SCALE: 6" = 1'-0"



WALK THROUGH GATE DETAIL
SCALE: 3/8" = 1'-0"

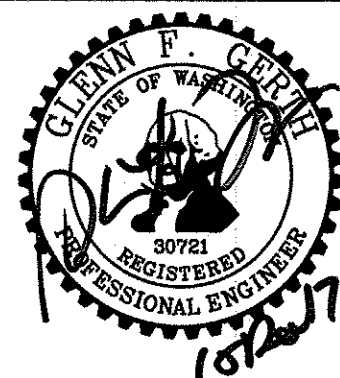


WIRE HANGER
SCALE: 1" = 1'-0"



WIRE HANGER ASSEMBLY
SCALE: 1" = 1'-0"

WASHINGTON STATE
DEPARTMENT OF FISH AND WILDLIFE



SYM	DATE	REVISION DESCRIPTION	BY
		APPROVED AND RELEASED FOR CONSTRUCTION	
		CHIEF ENGINEER	DATE: 10/20/17
		PROGRAM	DATE: 12-15-2017

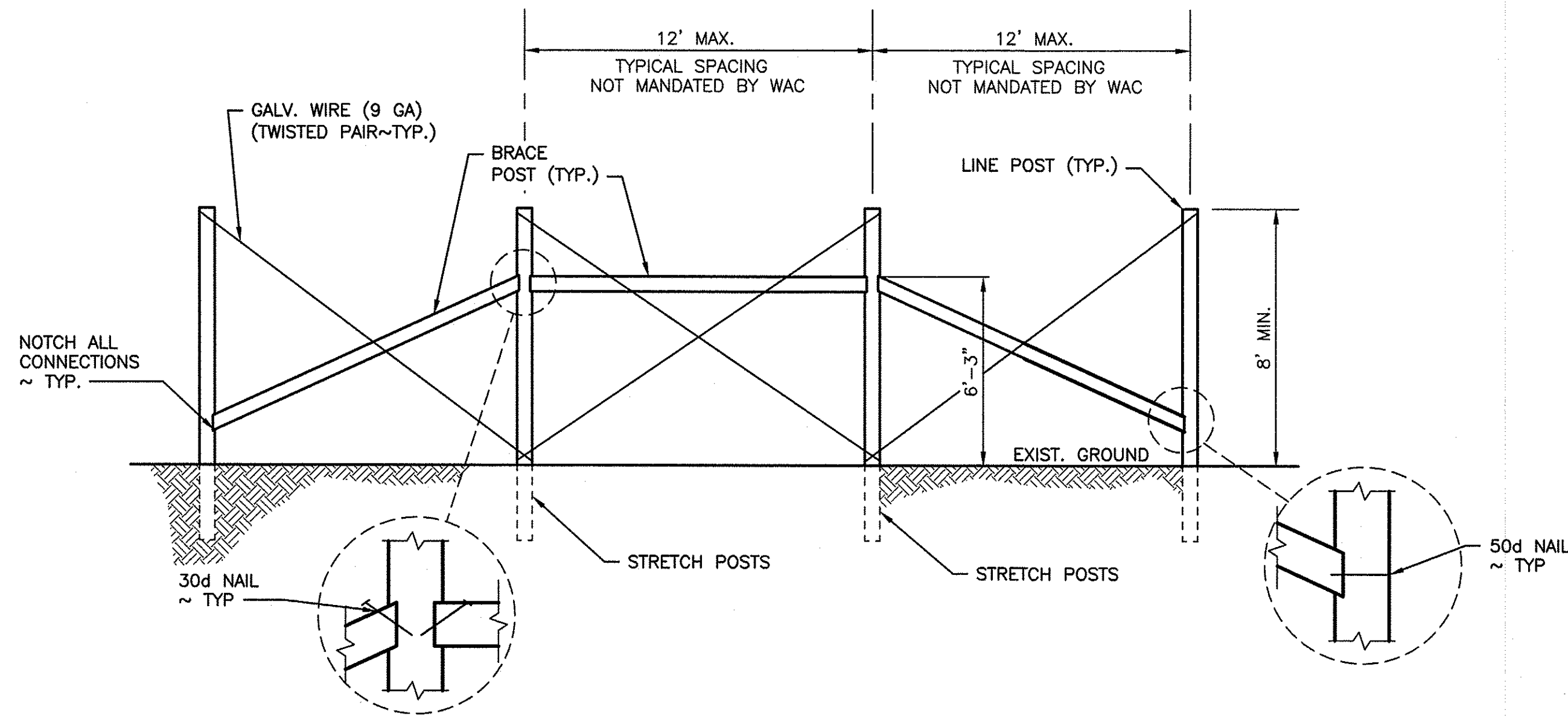
0" = 1"
BAR MEASURES ONE INCH ON ORIGINAL DRAWINGS

OAK CREEK WLA - COWICHE UNIT
ELK FENCE REPLACEMENT
MISCELLANEOUS METAL FENCE DETAILS

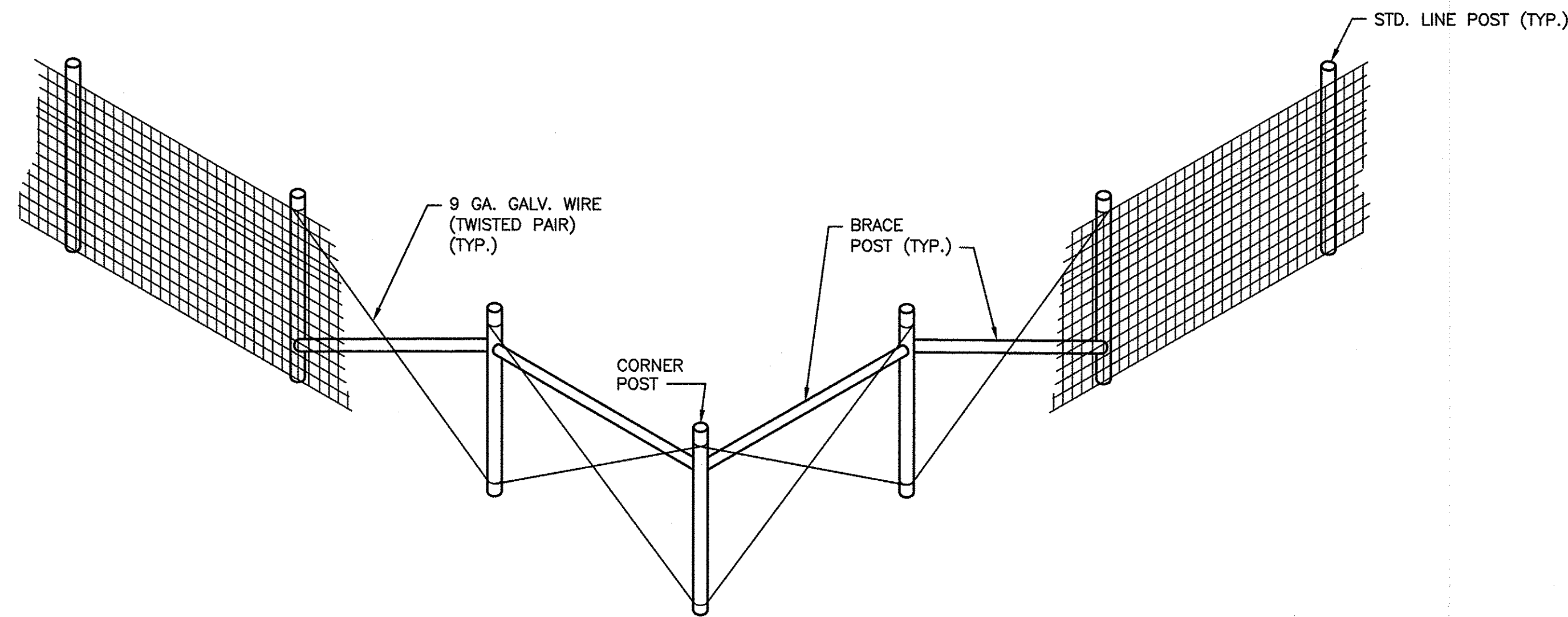
PROJECT NO.
YA:R101:17-1

SHEET OF
7 10

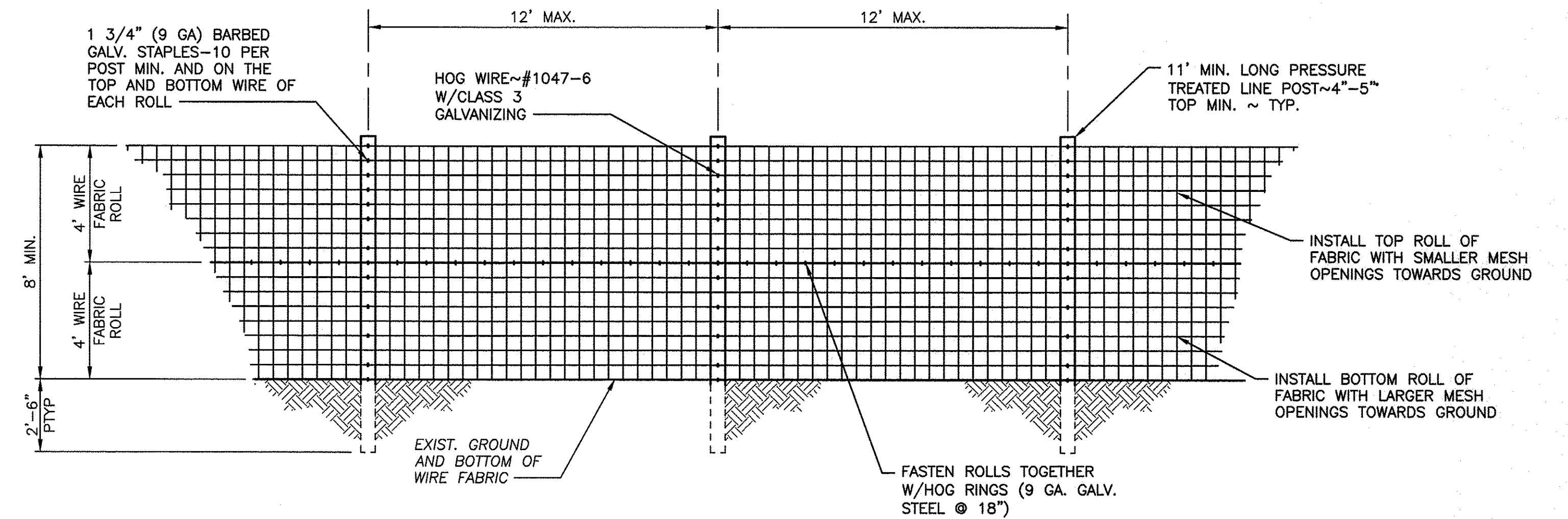
- NOTE:**
1. ALL POST SHALL BE PRESSURE TREATED (CCA TYPE 2 PRESERVATIVE AT 0.40 LB/CU. FT. RETENTION MIN.
 2. LINE AND BRACE POSTS SHALL BE MIN. 11' LONG, WITH MIN. 4" TOP AND 5" BUTT.
 3. GATE, CORNER AND STRETCH POSTS SHALL BE 11' LONG, MIN. WITH MIN. 6" TOP AND 7" BUTT.
 4. WOVEN WIRE (HOG WIRE) SHALL BE #1047-6-12-1/2 WITH CLASS 3 GALVANIZING.
 5. STAPLES SHALL BE 1 3/4". 9 GA. CLASS 1 GALVANIZING.
 6. HOG RINGS SHALL BE 9 GA. STEEL, CLASS 1 GALVANIZING.
 7. END OF ROLL SPLICES FOR FABRIC AND WIRE SHALL BE STAGGERED ONE POLE SPACING MINIMUM.
 8. POST ARE TO BE 4"-5"Ø (MIN.)
 9. BRACE POSTS ARE TO BE 5"-6"Ø (MIN.)



WOODEN TWO WAY STRETCHING BRACE
NOT TO SCALE

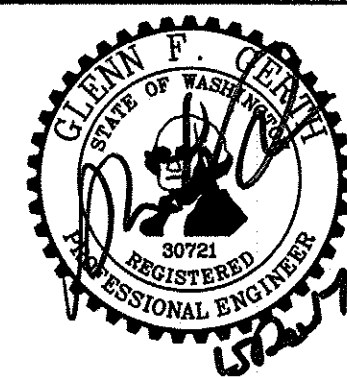


WOODEN CORNER POST BRACING
NOT TO SCALE



WOODEN LINE FENCE
NOT TO SCALE

WASHINGTON STATE
DEPARTMENT OF FISH AND WILDLIFE



SYM	DATE	REVISION DESCRIPTION	BY
		APPROVED AND RELEASED FOR CONSTRUCTION	
		DATE: 12-15-2017	
		PROGRAM	

0 1"
BAR MEASURES
ONE INCH ON
ORIGINAL DRAWINGS

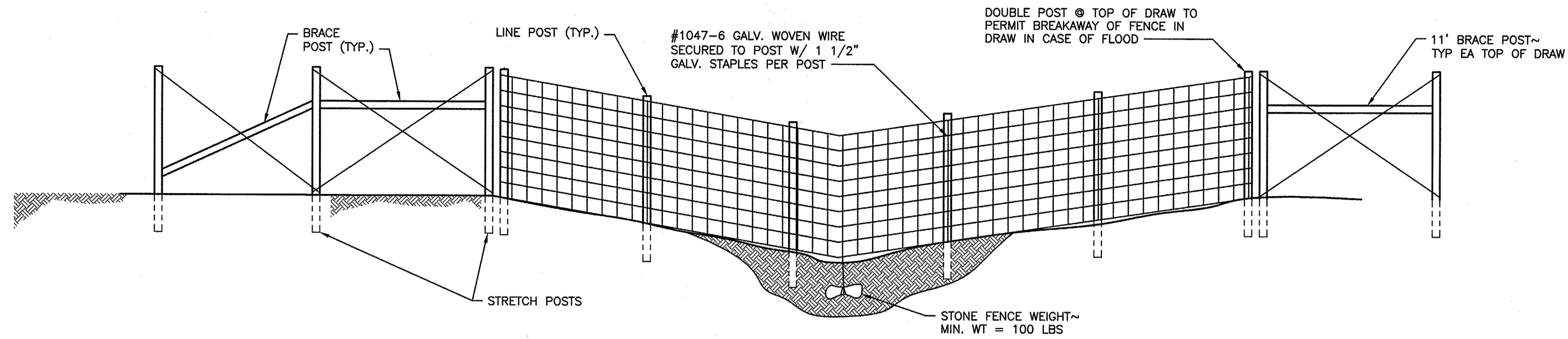
DESIGNED BY
CHECKED BY D. SMITH
DRAWN BY SASHLER
DATE 12-15-2017

OAK CREEK WLA - COWICHE UNIT
ELK FENCE REPLACEMENT
WOODEN FENCE DETAILS 1

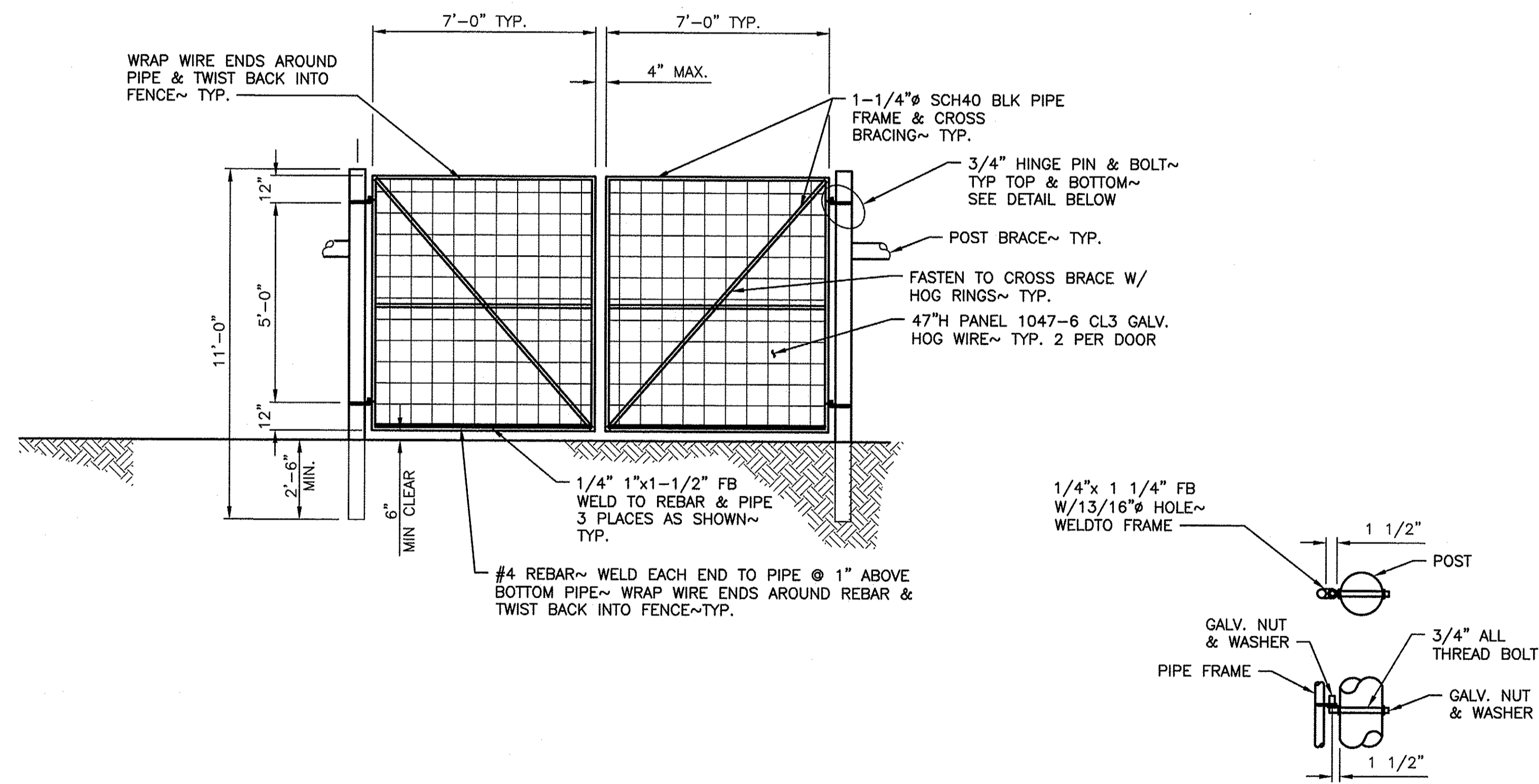
PROJECT NO.
YA:R101:17-1

SHEET 8 OF 10

- NOTE:**
1. 14' WIDE GATES TO BE MADE IN 7' LONG PIECES
 2. 12' LONG GATES TO BE MADE IN ONE PIECE
 3. 1 1/4" PIPE FRAME TO BE WELDED @ 4 CORNERS W/ 1 1/4" PIPE BRACE TO BE WELDED TO OPPOSING CORNERS AS SHOWN



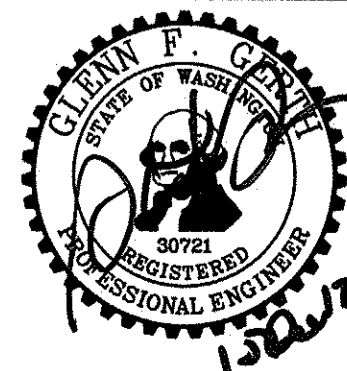
WOODEN TWO WAY STRETCHING BRACE
NOT TO SCALE



WOODEN VEHICLE ACCESS GATE
NOT TO SCALE

HINGE DETAILS
NOT TO SCALE

WASHINGTON STATE
DEPARTMENT OF FISH AND WILDLIFE



SYM	DATE	REVISION DESCRIPTION	BY
APPROVED AND RELEASED FOR CONSTRUCTION			
CHIEF ENGINEER <i>[Signature]</i>		DATE: 1/20/17	
PROGRAM		DATE:	

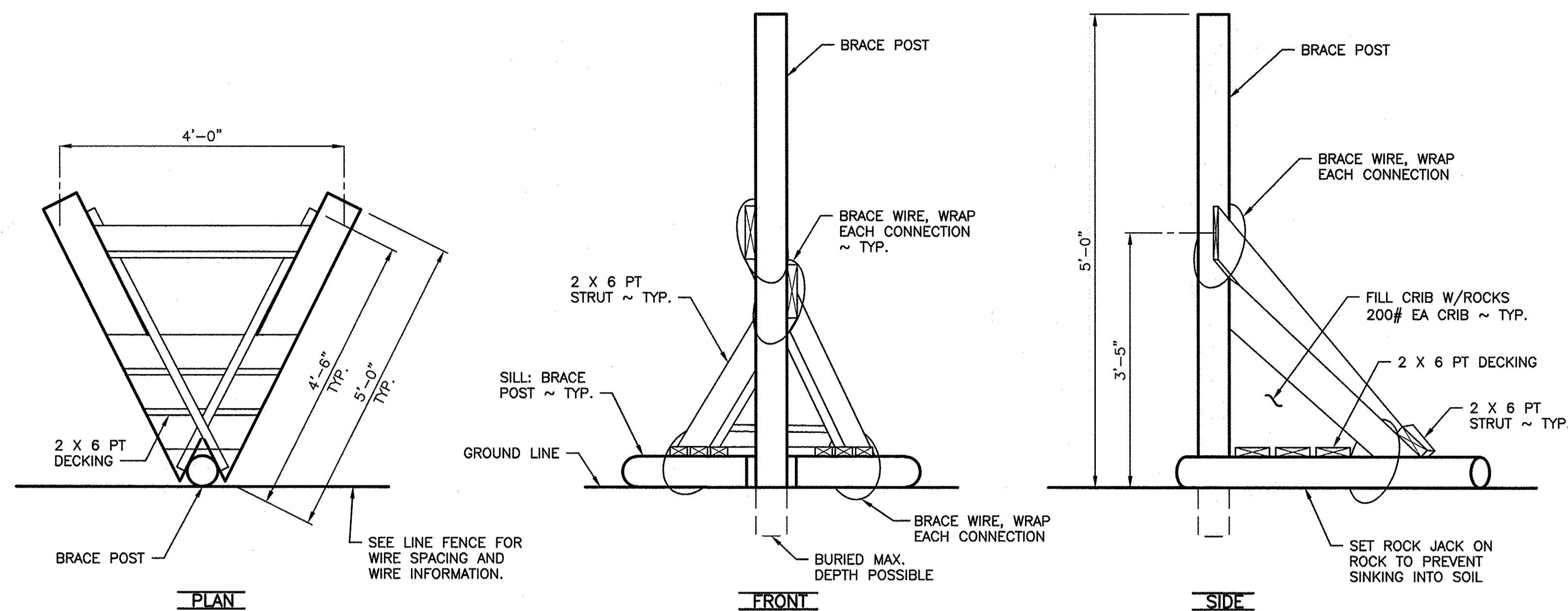
0 1" BAR MEASURES ONE INCH ON ORIGINAL DRAWINGS

DESIGNED BY
CHECKED BY D. SMITH
DRAWN BY SASHLER
DATE 12-15-2017

OAK CREEK WLA - COWICHE UNIT
ELK FENCE REPLACEMENT
WOODEN FENCE DETAILS 2

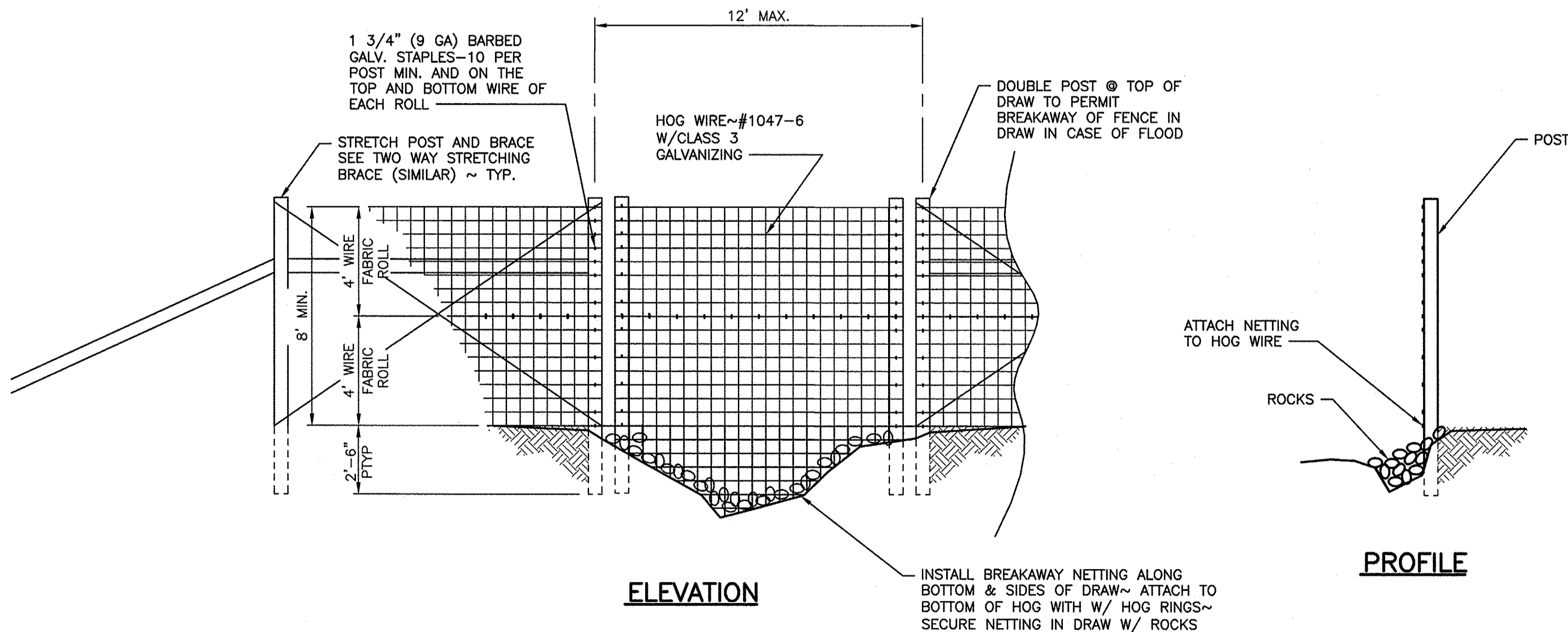
PROJECT NO.
YA:R101:17-1

SHEET 9 OF 10



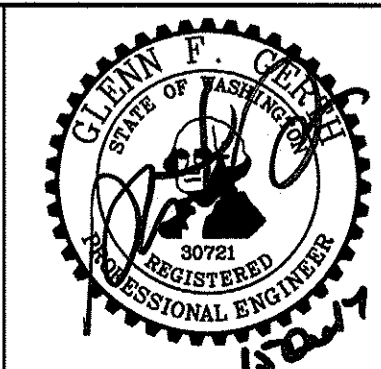
WOODEN ROCK JACK
NOT TO SCALE

- NOTE:**
- BRACE/CORNER POSTS SHALL BE AT LEAST 12'-0" x 4" TO 5" IN DIAMETER POST SHALL BE TREATED AS DESCRIBED IN SPECIFICATIONS.
 - 2x6 STRUTS AND DECKING SHALL BE PRESSURE TREATED.
 - ROCK JACKS ARE TO BE USED IN AREAS WHERE POST CANNOT BE USED.
 - ATTACH ROCK JACK MEMBERS WITH 20d GALVANIZED COMMON NAILS.
 - LONGITUDINAL WIRES NOT SHOWN, SPACING SHALL BE THE SAME AS THE LINE FENCE.



WOODEN SMALL DRAW CROSSING
NOT TO SCALE

WASHINGTON STATE
DEPARTMENT OF FISH AND WILDLIFE



0	1"	BAR MEASURES ONE INCH ON ORIGINAL DRAWINGS
DESIGNED BY		
CHECKED BY	D. SMITH	
DRAWN BY	S. ASHLER	
DATE	12-15-2017	
CHIEF ENGINEER	[Signature]	
DATE	1/24/17	
PROGRAM		
DATE		

OAK CREEK WLA - COWICHE UNIT
ELK FENCE REPLACEMENT
WOODEN FENCE DETAILS 3

PROJECT NO. YA:R101:17-1	
SHEET	OF
10	10