

Matlock

Walkers Landing

Graham Point

Harstine Island

Shelton

Agate

Lakebay

Carr Inlet

McNeil Island

Anderson Island

University Place

Tacoma

101

Carlyon Beach

Lakewood

Parkland

Kamilche

Boston Harbor

DuPont

5

Spanaway

McCleary

101

Olympia

Lacey

Nisqually Indian Community

Roy

Elk Plain

Elma

Tumwater

5

Kellys Korner

Mock City

Malone-Porter

Capitol State Forest

Rony

Yelm

12

Little Rock

Maytown

Skookumchuck

Rainier

Vail

Oakville

Tenino

12

Chehalis Village

Grand Mound

5

Bucoda

Fords Prairie

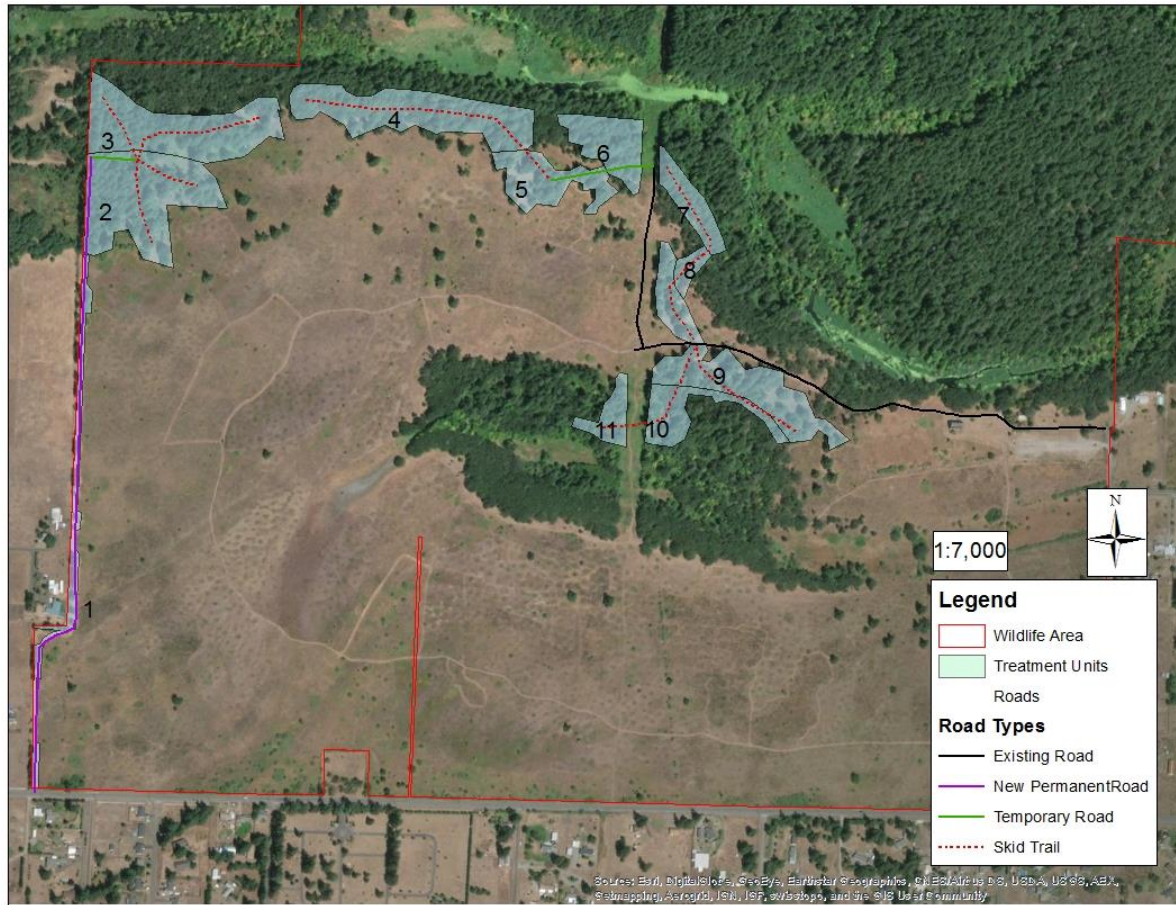
Centralia

Kopiah

Locator Map for the Scatter Creek Wildlife Area



Map of Treatment Units, Roads and Skid Trails



Treatment Units Table (Units labelled on map).

Unit	Size (ac)	Treatment Objective	Notes
1	2.4	Wildfire protection and prairie preservation	A row of 188 Douglas fir that were planted on the property line. About 1 acre burned intensely but not all of the burned trees died. Some of the unit footprint will be converted to a narrow gravel road that will form a fire break along the fence.
2	7.1	Increase prairie habitat	A pure Douglas fir stand that was once prairie. The entire unit burned. Thin to savanna with only a few large trees per acre.
3	6.5	Increase prairie habitat	A pure Douglas fir stand that was once prairie. None of the unit burned. Thin to savanna with only a few large trees per acre.
4	6.2	Oak release	A mixed oak/fir stand. Thin fir to release oak leave leaving some large fir in areas where old stumps present. About 4.4 acres burned.
5	2.9	Prairie restoration	A pure Douglas fir stand that was once prairie. The entire unit burned intensely. Thin to savanna with only a few large trees per acre.
6	2.6	Oak release	A mixed oak/fir stand. Thin fir to release oak leaving some large fir in areas where old stumps present. About 1.2 acres burned.
7	1.7	Oak release	Mostly Douglas fir with some oak. The entire unit burned. Most fir trees dead. Thin to reducing competition and fuels around future oaks. Leave some large fir where old fir stumps are present.
8	0.6	Oak release	A mixed oak/fir stand. The entire unit burned. All fir died. Remove fir to reduce fuels around oaks.
9	6.2	Increase prairie habitat	A nearly pure Douglas fir stand that was once prairie. The entire unit burned intensely. Thin to savanna with oaks where present leaning only a few large fir. Remove logs created along power lines.
10	2.3	Oak release	A mixed oak/fir stand. The entire unit burned. Thin fir to release oak leaving some large fir in areas where old stumps present. Remove logs created along power lines.
11	1.3	Oak release	A mixed oak/fir stand. The entire unit burned. Leave large fir when releasing oak in areas where old fir stumps present. Remove logs created along power lines.

Extent of 2017 Wildfire

