



**DUCKS UNLIMITED**  
 17700 S. E. MILL PLAIN BLVD. SUITE 100  
 VANCOUVER, WA. 98683  
 PH. (360) 885-2011

# US-WA-320-1

## Desert Unit Ponds

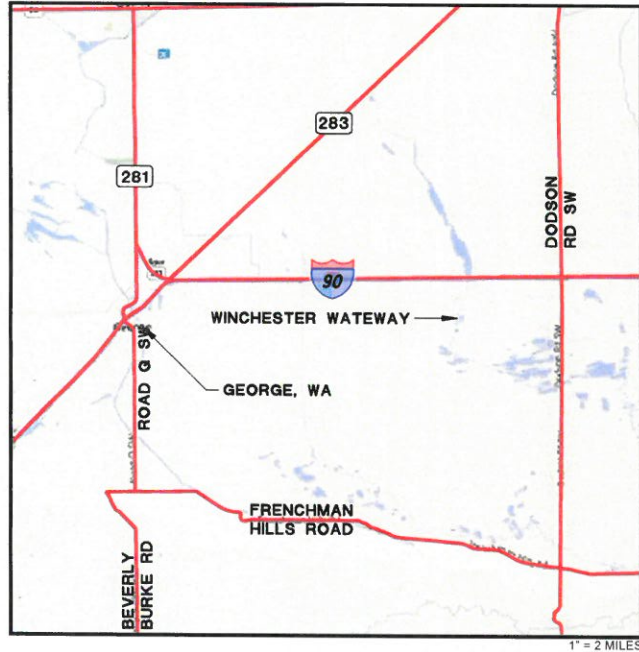
### Winchester Wetlands



#### SHEET INDEX

1	Cover Sheet
2	Notes
3	Plan View
4	Excavation Area #1 & 2
5	Excavation Area #3
6	Excavation Area #4
7	Excavation Area #5
8	Excavation Area #6 & 7
9	Excavation Area #8 & 9

**SITE MAP**



**VICINITY MAP**

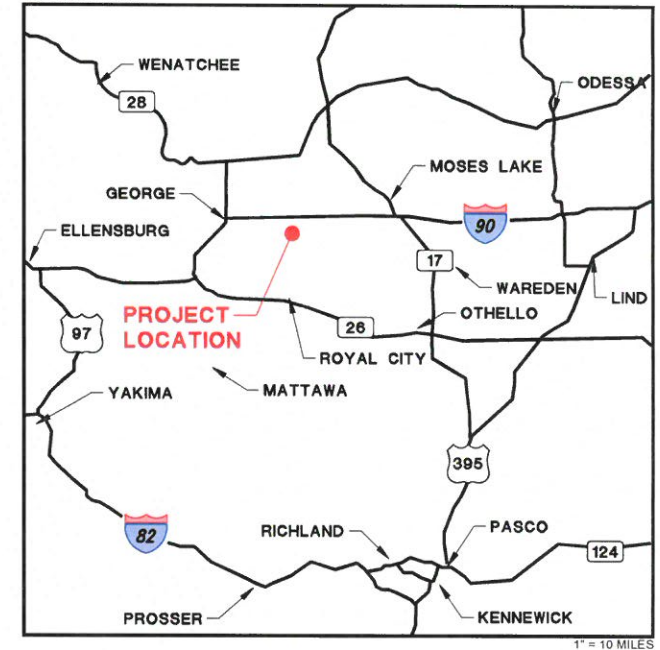


#### SURVEY DATUM

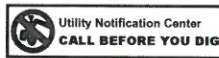
Horizontal: NAD 83  
 US State Plane Washington South Zone  
 Vertical: NAVD88  
 Units: US Feet

Horizontal: Washington State Plane South Zone,  
 NAD\_83(2011)EPOCH:2010.0000  
 Vertical: NAVD 88 (Computed using GEOID12B)  
 Units: Survey Feet  
 Horizontal/Vertical Control by 7 Hour GPS Static Observation  
 Submitted to NGS OPUS

**VICINITY MAP**



**Unauthorized Changes & Uses**  
 The engineer preparing these plans will not be responsible for, or liable for, unauthorized changes to or uses of these plans. All changes must be in writing and must be approved by the preparer of these plans.

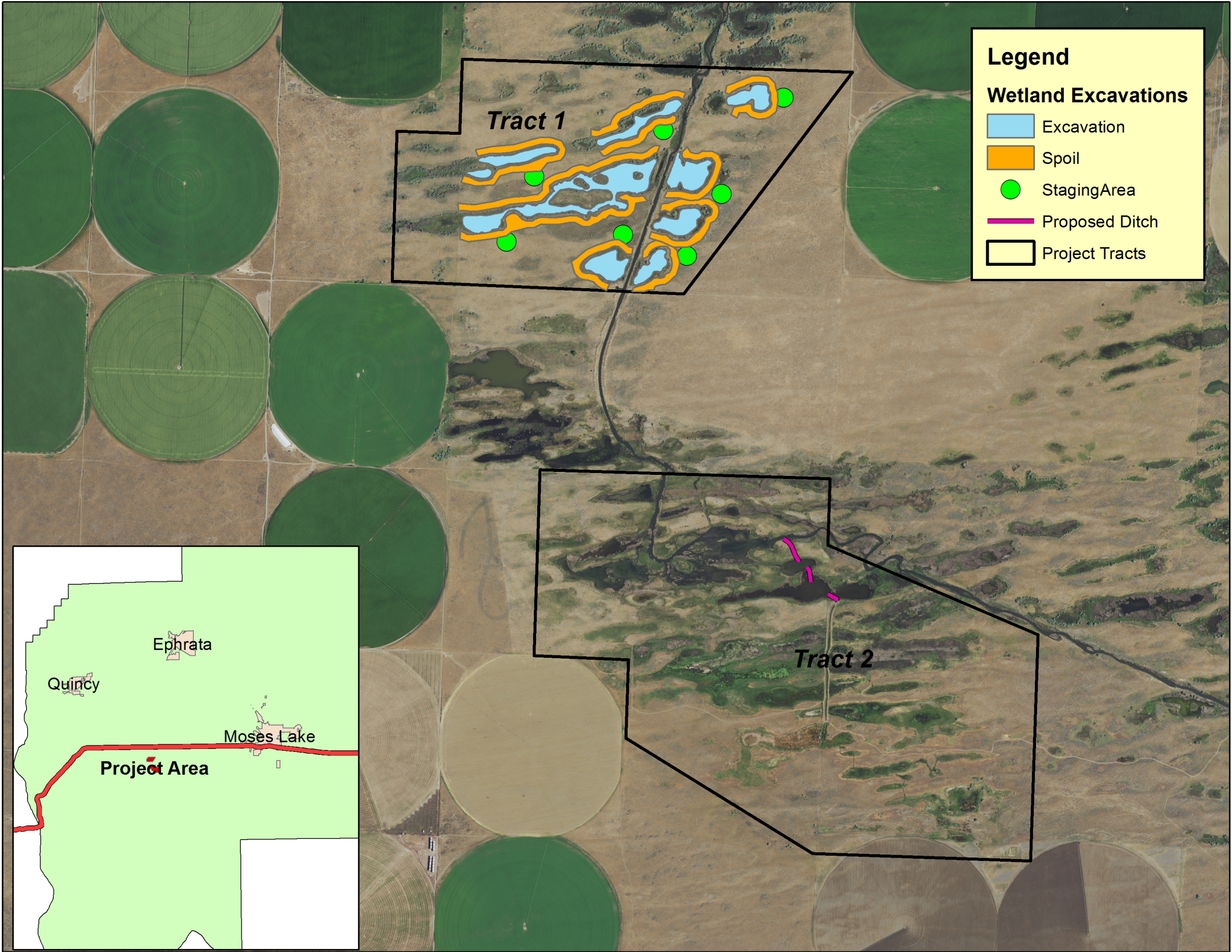


**PRELIMINARY**  
 NOT FOR CONSTRUCTION

REV. NO.	DESCRIPTION	DATE	APPROVED



PROJECT NO. US-WA-320-1	DATE 9/9/2016	DESIGNED BY: BAH
Desert Unit Ponds		DRAWN BY: DMC
Winchester Wetlands		SURVEYED BY: JPL
COVER SHEET		CHECKED BY: JPL
		SHEET NO. 1



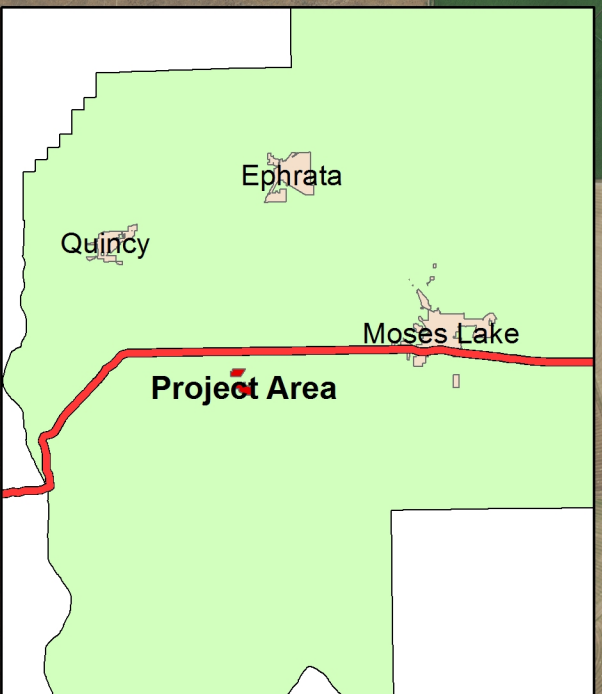
### Legend

#### Wetland Excavations

-  Excavation
-  Spoil
-  Staging Area
-  Proposed Ditch
-  Project Tracts

**Tract 1**

**Tract 2**



Ephrata

Quincy

Moses Lake

**Project Area**