



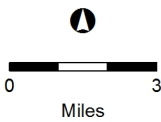
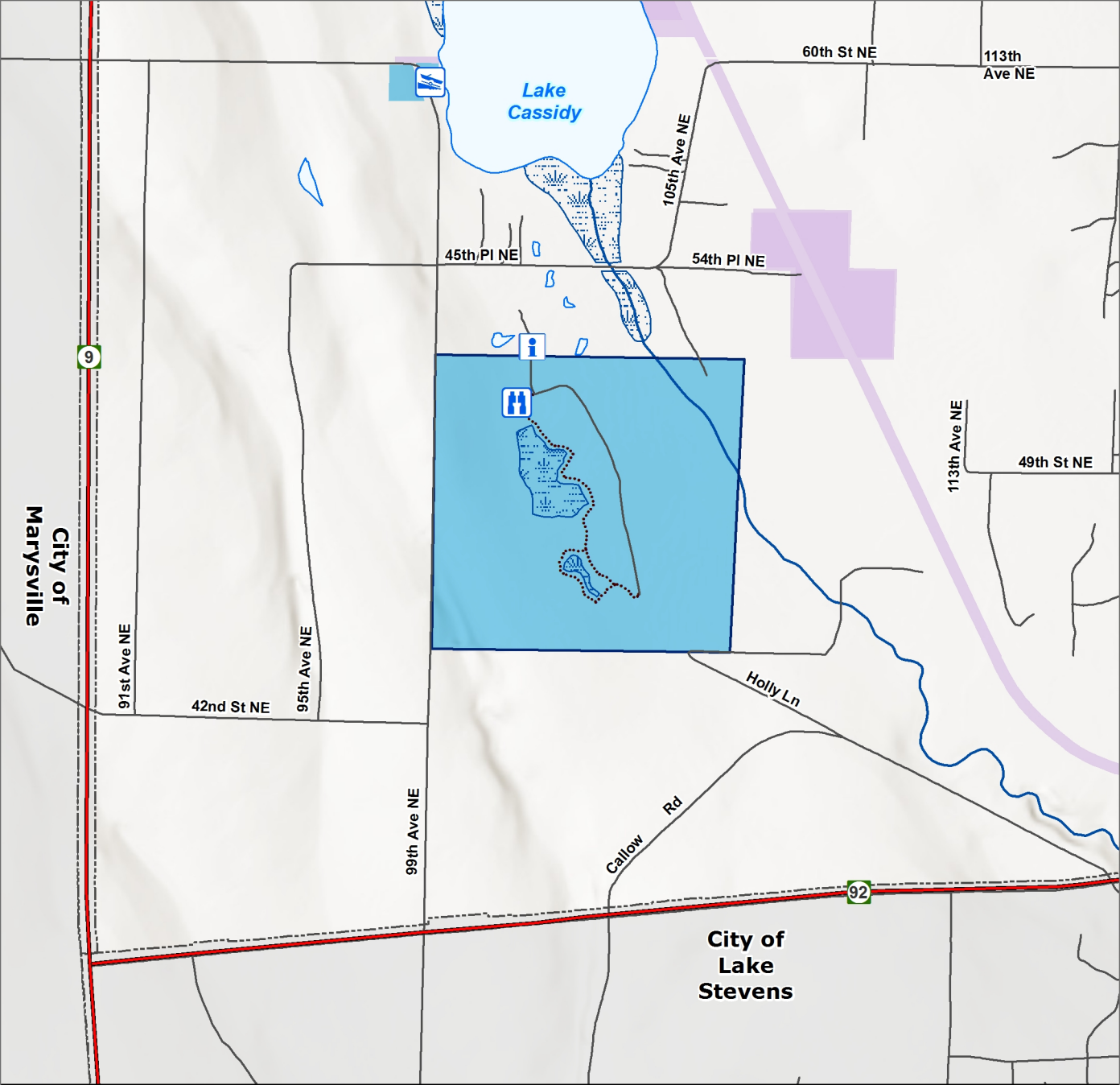


Snoqualmie Wildlife Area



 Unit Area




-  Interstate Highway
-  US Highway
-  State Route












Corson Natural Unit

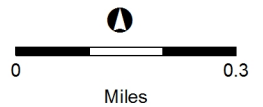
-  Wildlife Area Boundary
-  Owned by WDFW

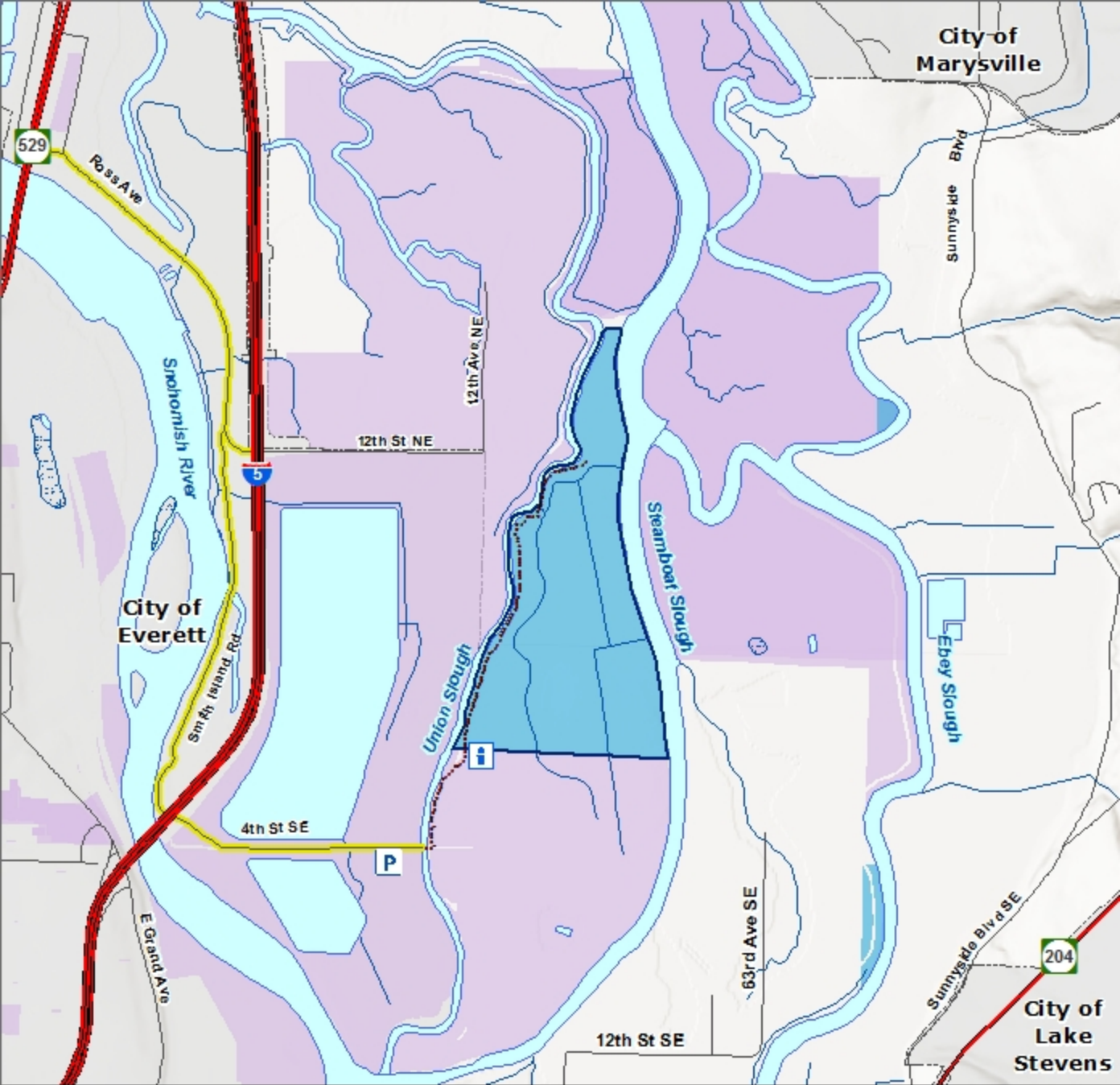
-  Boat Launch
-  Educational kiosk
-  Viewing blind

 Municipal



-  State Route
-  Road
-  Trail

-  Perennial Creek
-  Lake, Pond, or Wide River
-  Swamp or Marsh








Spencer Island Unit

-  Wildlife Area Boundary
-  Owned by WDFW

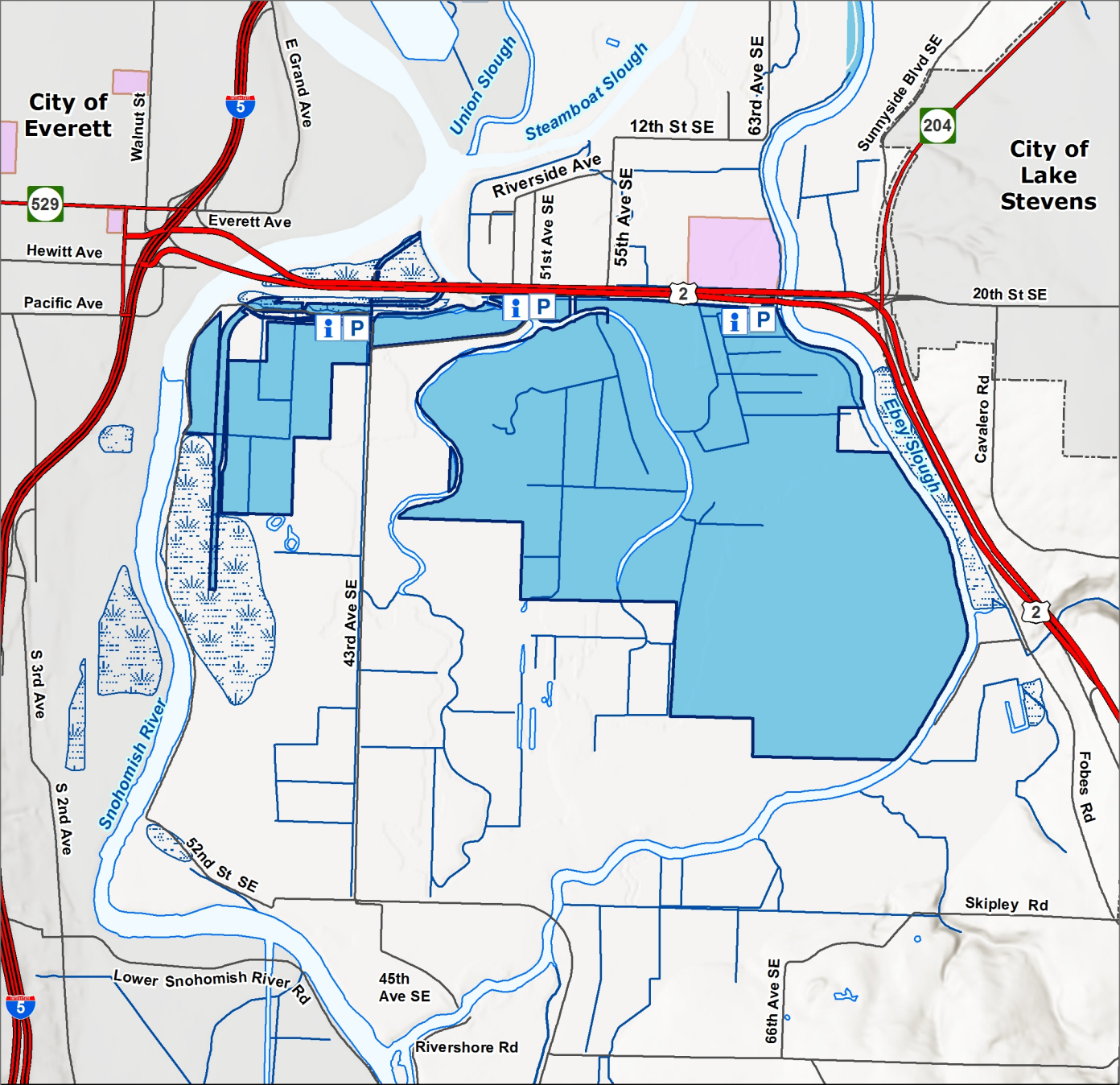
 Municipal

-  Interstate Highway
-  State Route
-  Road
-  Trail
-  Primary Access Road

-  Perennial Creek
-  Lake, Pond, or Wide River
-  Swamp or Marsh



7/3/2017



Ebey Island Unit

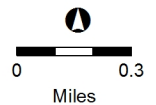
- Wildlife Area Boundary
- Owned by WDFW
- Managed by WDFW

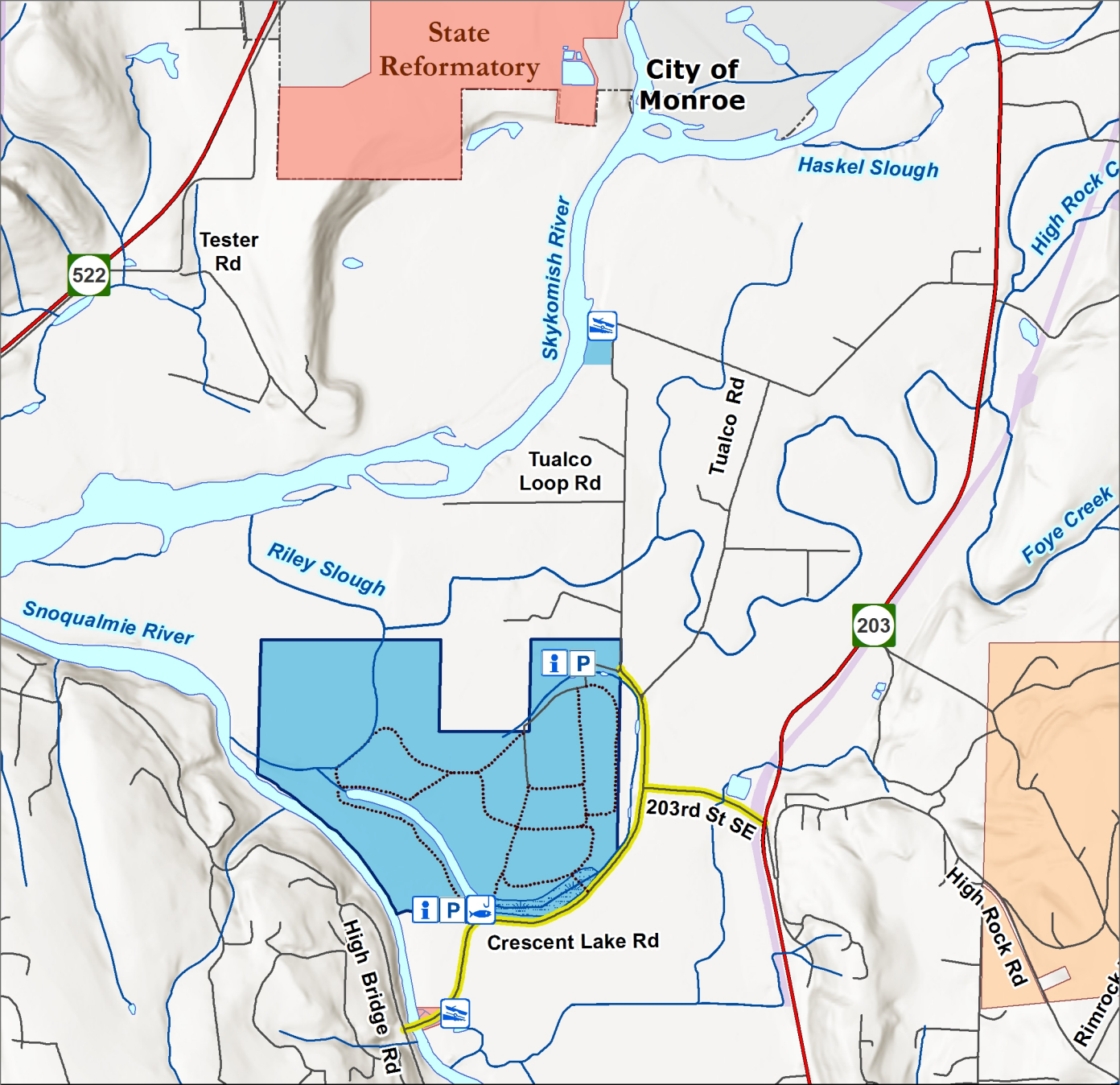
- Parking Lot
- Educational kiosk

Municipal

- Interstate Highway
- US Highway
- State Route
- Road

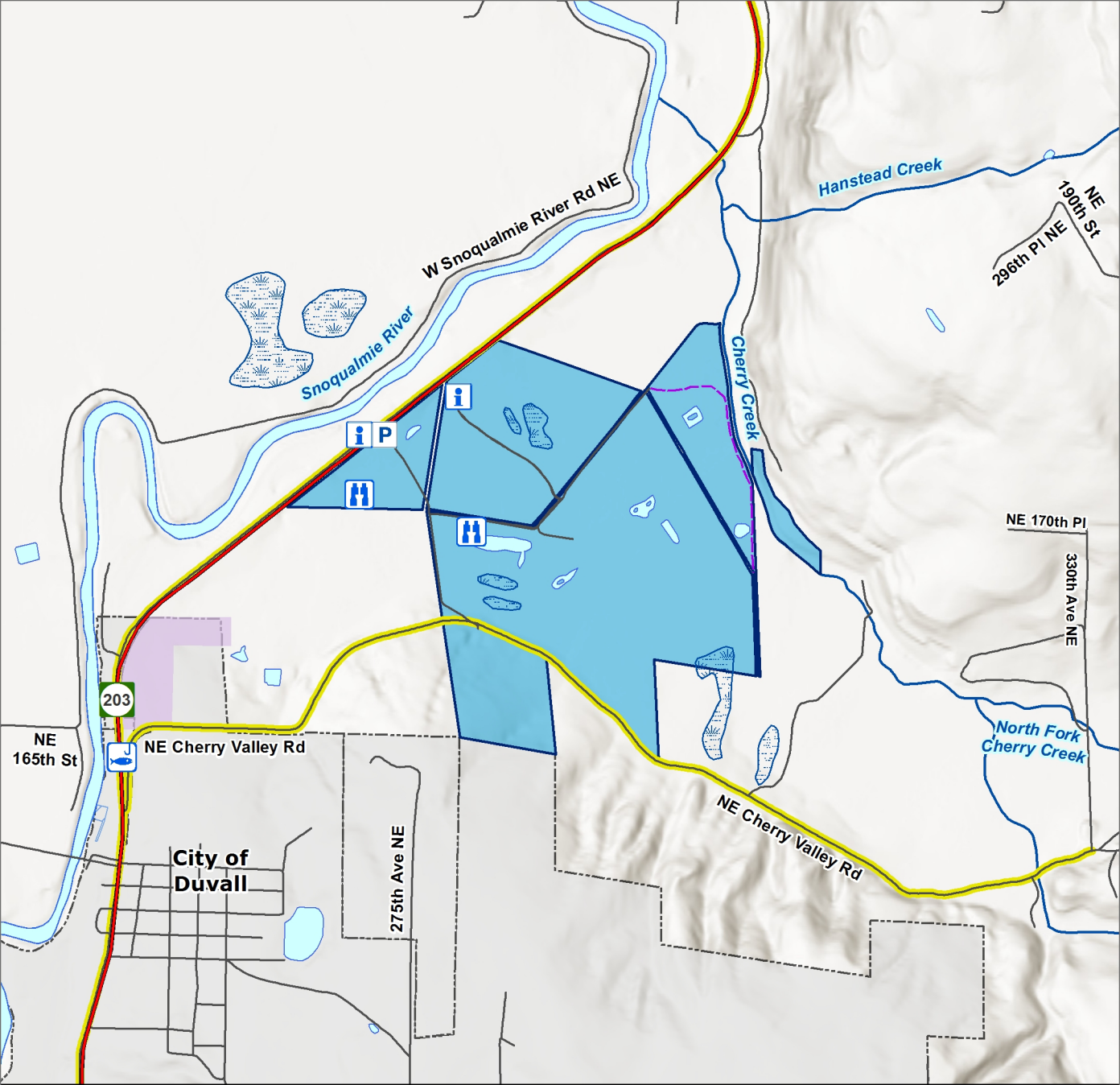
- Perennial Creek
- Canal or Ditch
- Lake, Pond, or Wide River
- Swamp or Marsh





Crescent Lake Unit

- | | | | | | | | |
|--|------------------------|--|-------------------|--|---------------------|--|---------------------------|
| | Wildlife Area Boundary | | DNR | | State Route | | Perennial Creek |
| | Owned by WDFW | | Other State Land | | Road | | Lake, Pond, or Wide River |
| | Managed by WDFW | | Municipal | | Trail | | Swamp or Marsh |
| | Boat Launch | | Parking Lot | | Primary Access Road | | |
| | Fishing Access | | Educational kiosk | | | | 0 0.3 Miles |



Cherry Valley Unit

Wildlife Area Boundary

Owned by WDFW

Managed by WDFW

Fishing Access

Viewing blind

Parking Lot

Educational kiosk

Municipal

State Route

Road

Primitive Road

Primary Access Road

Perennial Creek

Lake, Pond, or Wide River

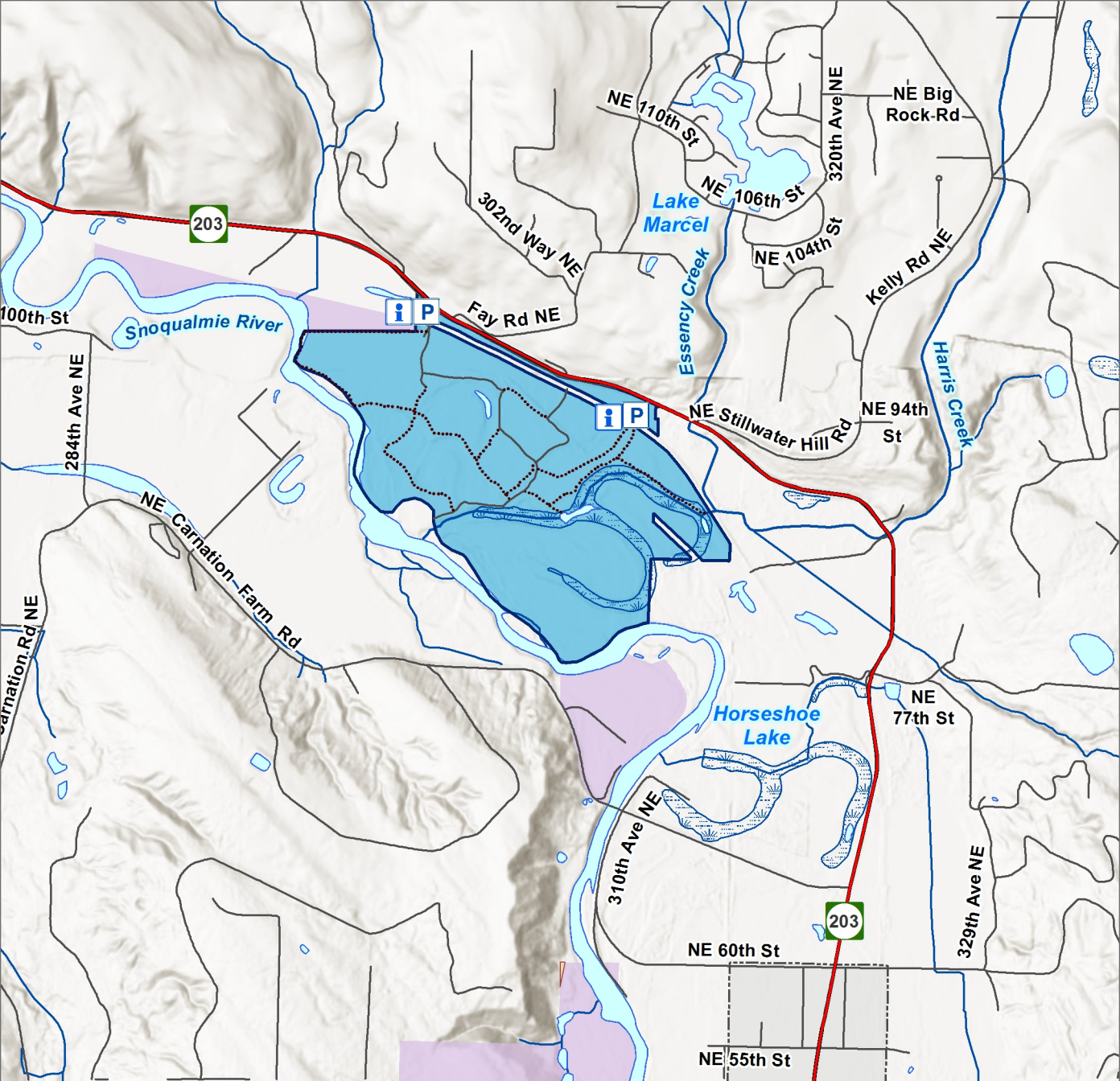
Swamp or Marsh





0 0.3

Miles




7/3/2017



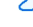


Stillwater Unit

-  Wildlife Area Boundary
-  Owned by WDFW

-  DNR
-  Municipal

-  State Route
-  Road
-  Trail

-  Perennial Creek
-  Lake, Pond, or Wide River
-  Swamp or Marsh

-  Parking Lot
-  Educational kiosk

