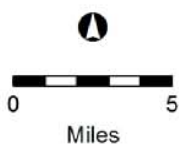
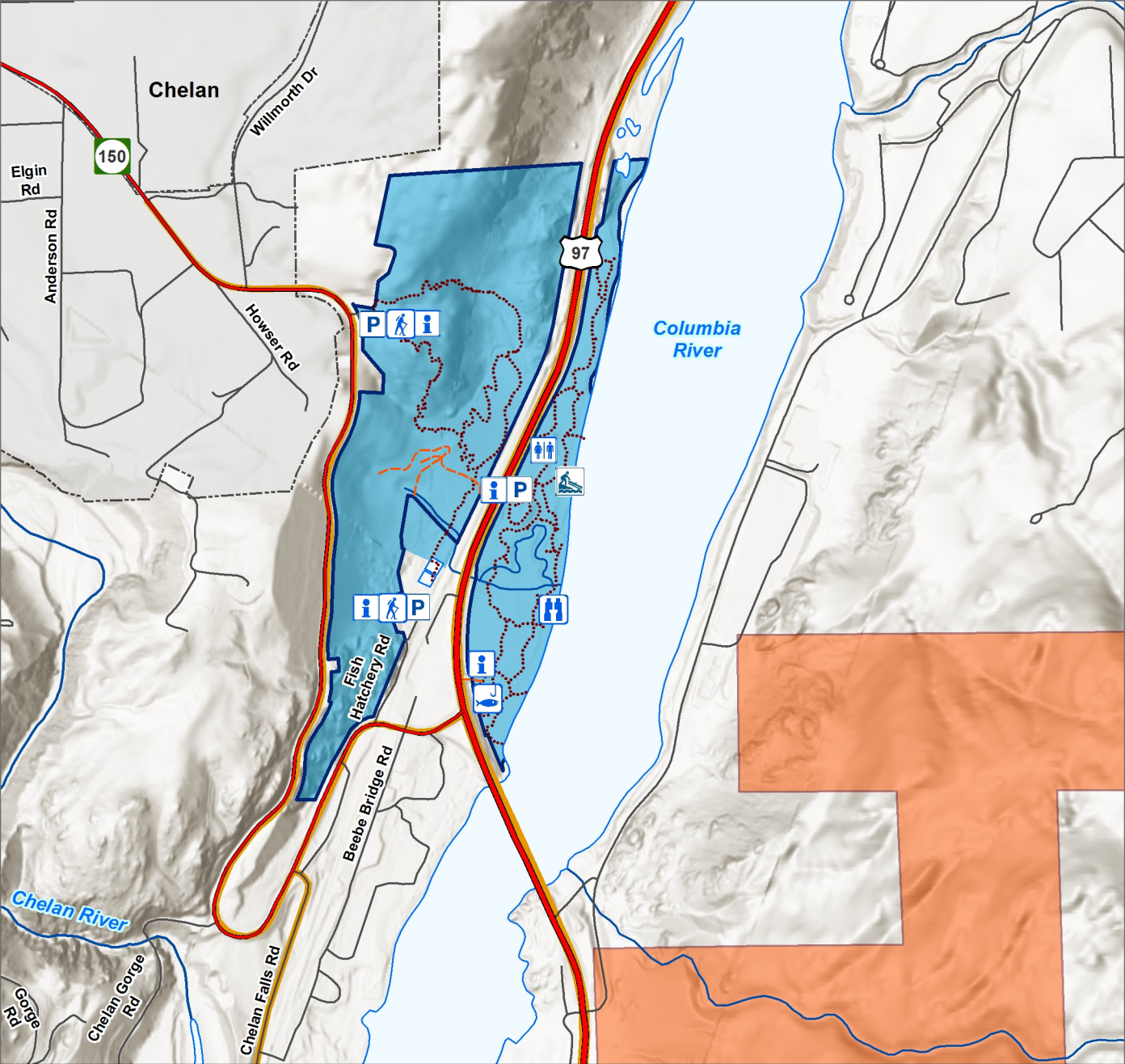


Chelan Wildlife Area

- | | | | |
|---|---------------|---|-------------|
|  | Beebe Springs |  | Pateros |
|  | Cashmere Pond |  | Swakane |
|  | Chelan Butte |  | White River |
|  | Entiat | | |

-  US Highway
-  State Route





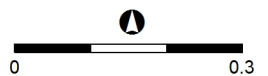
Beebe Springs Unit

- Wildlife Area Boundary
- Owned by WDFW

- US Highway
- State Route
- Road
- Administrative Use Only
- Trail
- Primary Access

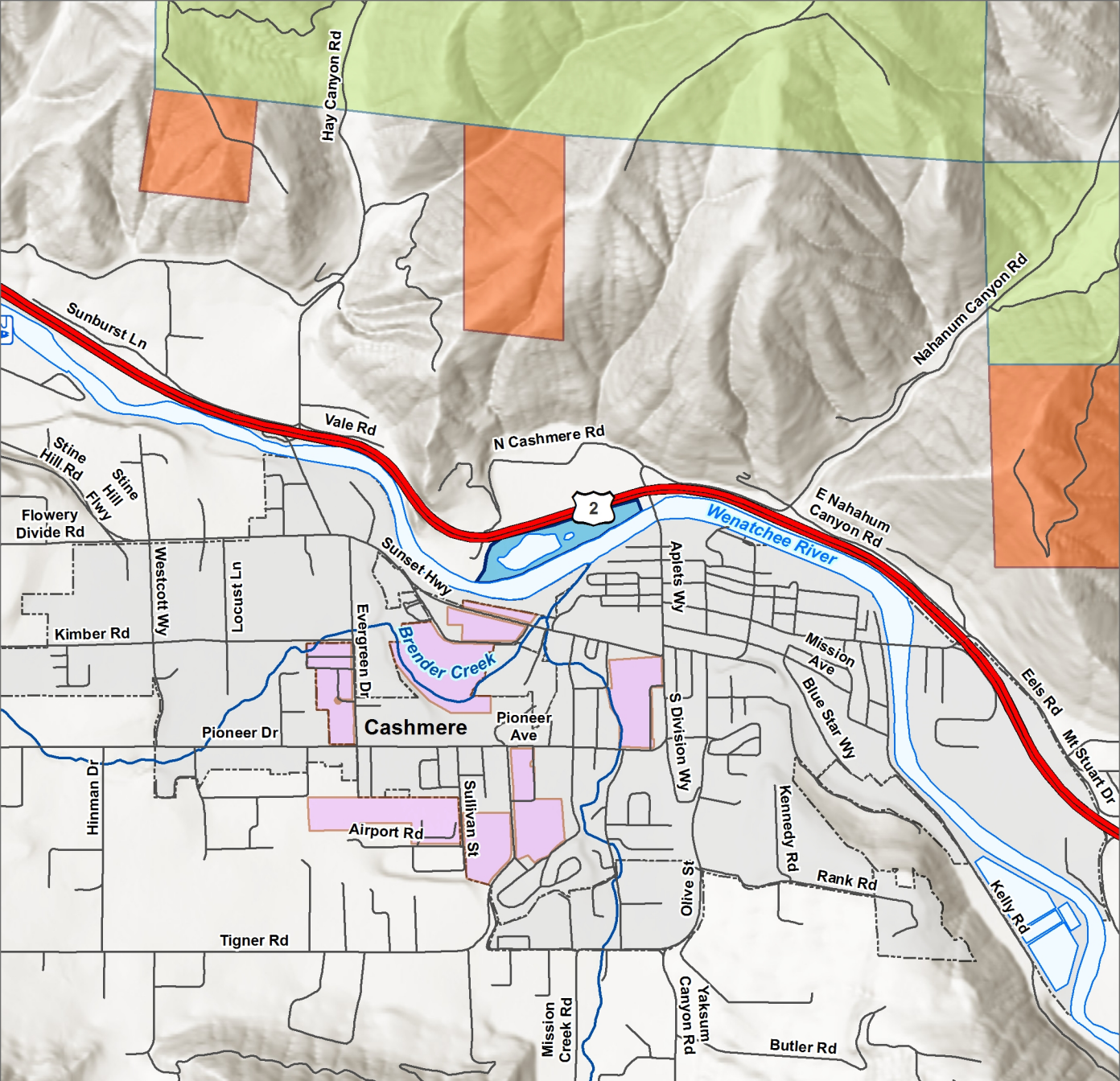
- Perennial River
- Lake, Pond, or Wide River

BLM






8/17/2017

- Hand Carried Boat Launch
- Fishing Access
- Hiking Trailhead
- Parking Lot
- Viewing blind
- Restroom
- Educational kiosk





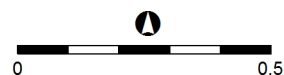
Cashmere Pond Unit

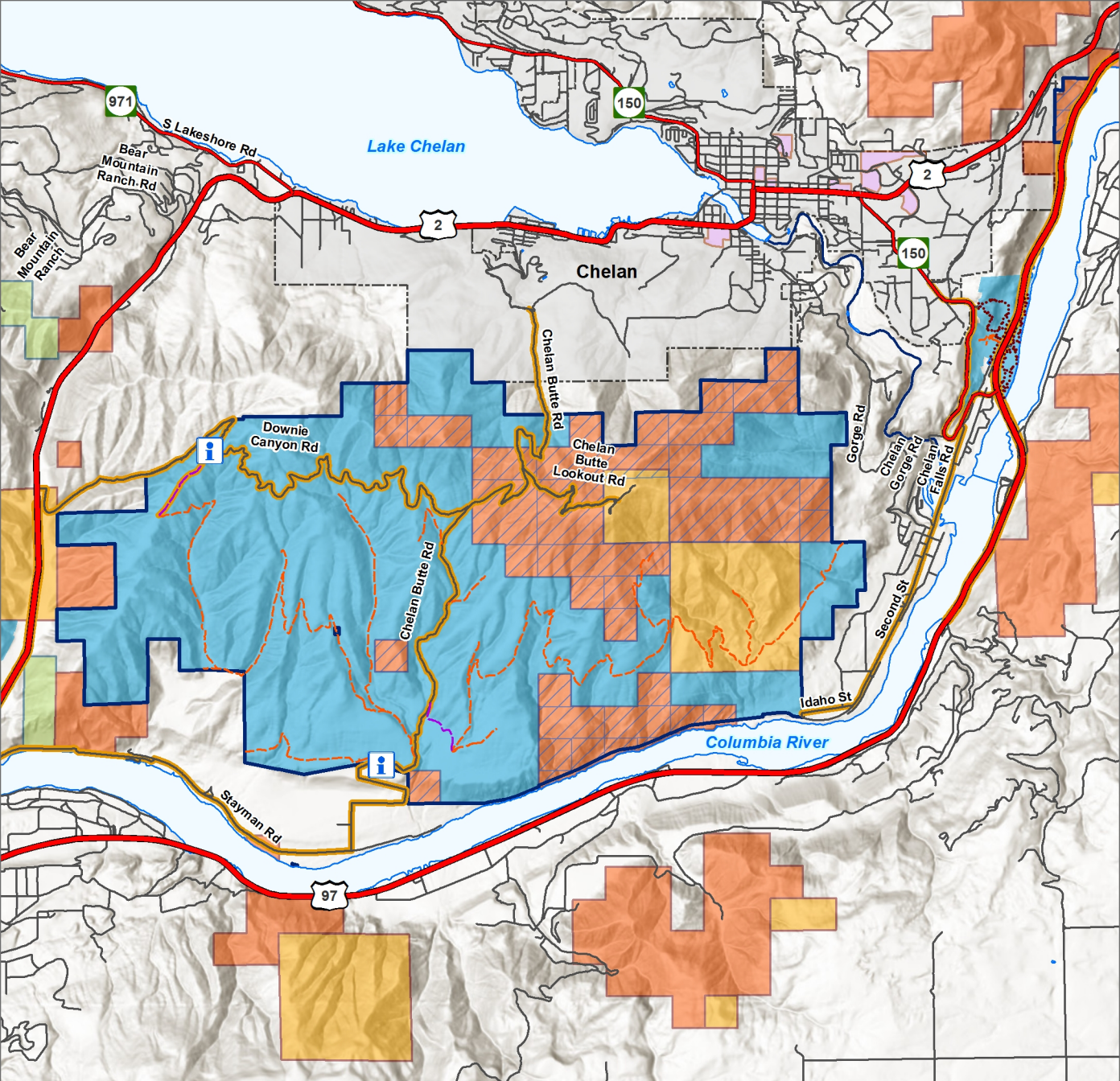
-  Wildlife Area Boundary
-  Owned by WDFW
-  Fishing Access

-  USFS
-  BLM
-  Municipal

-  US Highway
-  Road





-  Perennial Creek
-  Lake, Pond, or Wide River














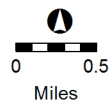
Chelan Butte Unit

-  Wildlife Area Boundary
-  Owned by WDFW
-  Managed by WDFW
-  Educational kiosk

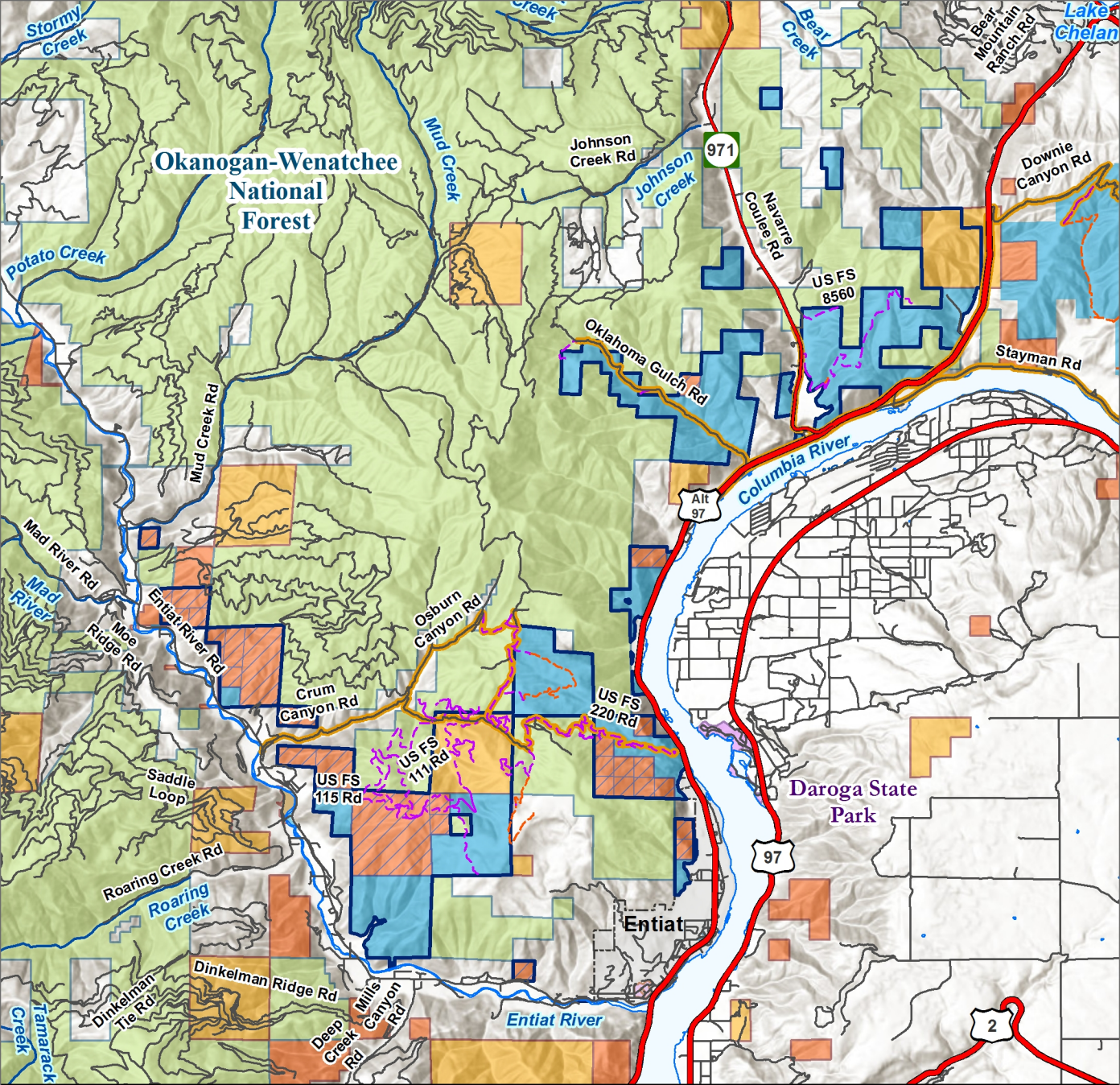
-  USFS
-  BLM
-  DNR
-  Municipal

-  US Highway
-  State Route
-  Road
-  Primitive Road
-  Administrative Use Only
-  Trail
-  Primary Access Road




-  Perennial Creek
-  Lake, Pond, or Wide River















1/12/2018






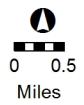
Entiat Unit

-  Wildlife Area Boundary
-  Owned by WDFW
-  Managed by WDFW

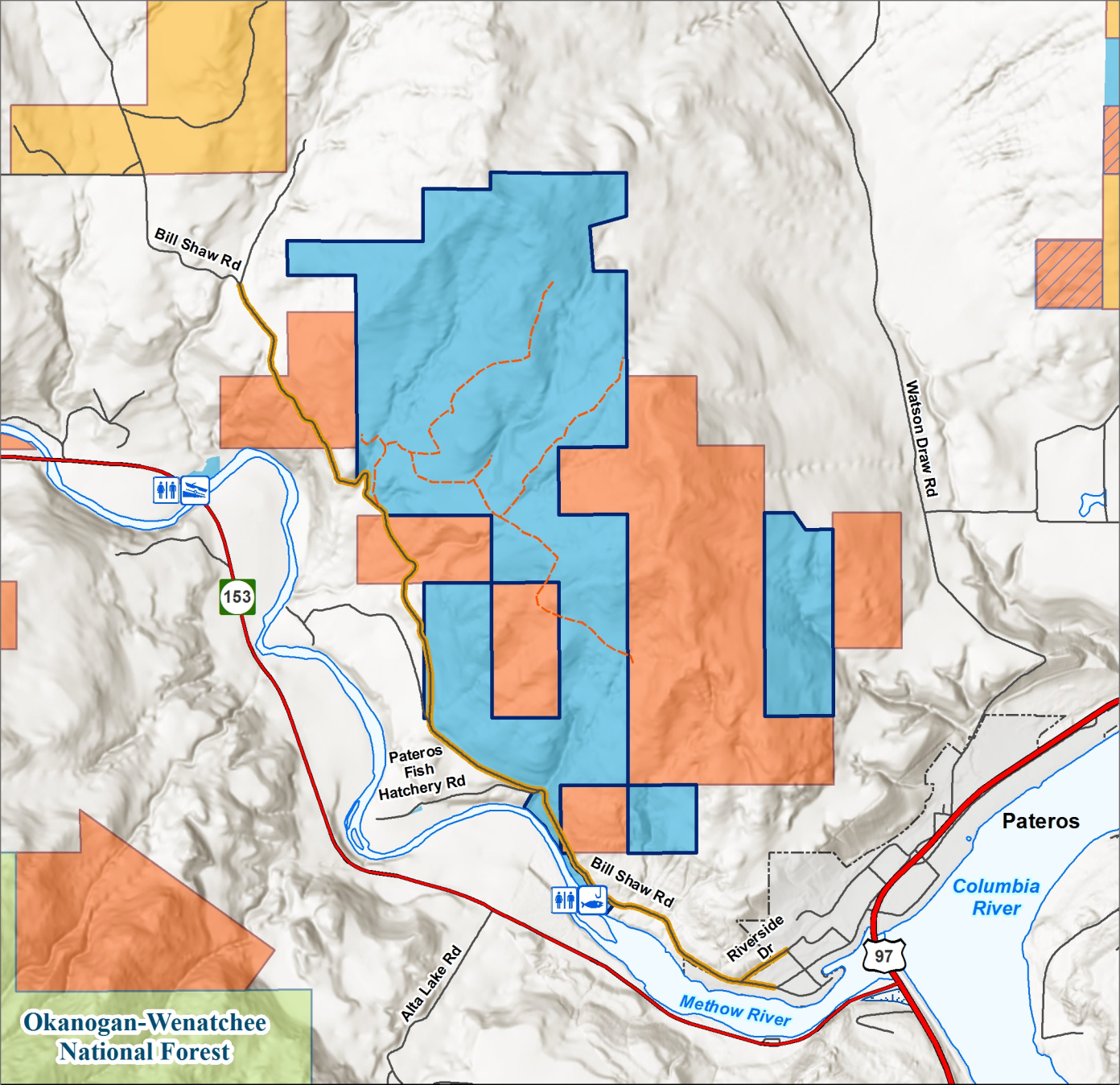
-  USFS
-  BLM
-  Other Federal Land
-  DNR
-  Other State Land
-  Municipal

-  US Highway
-  State Route
-  Road
-  Primitive Road
-  Administrative Use Only
-  Primary Access Road

-  Perennial Creek
-  Lake, Pond, or Wide River
-  Swamp or Marsh









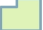


1/31/2018










Okanogan-Wenatchee National Forest

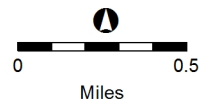
Pateros Unit

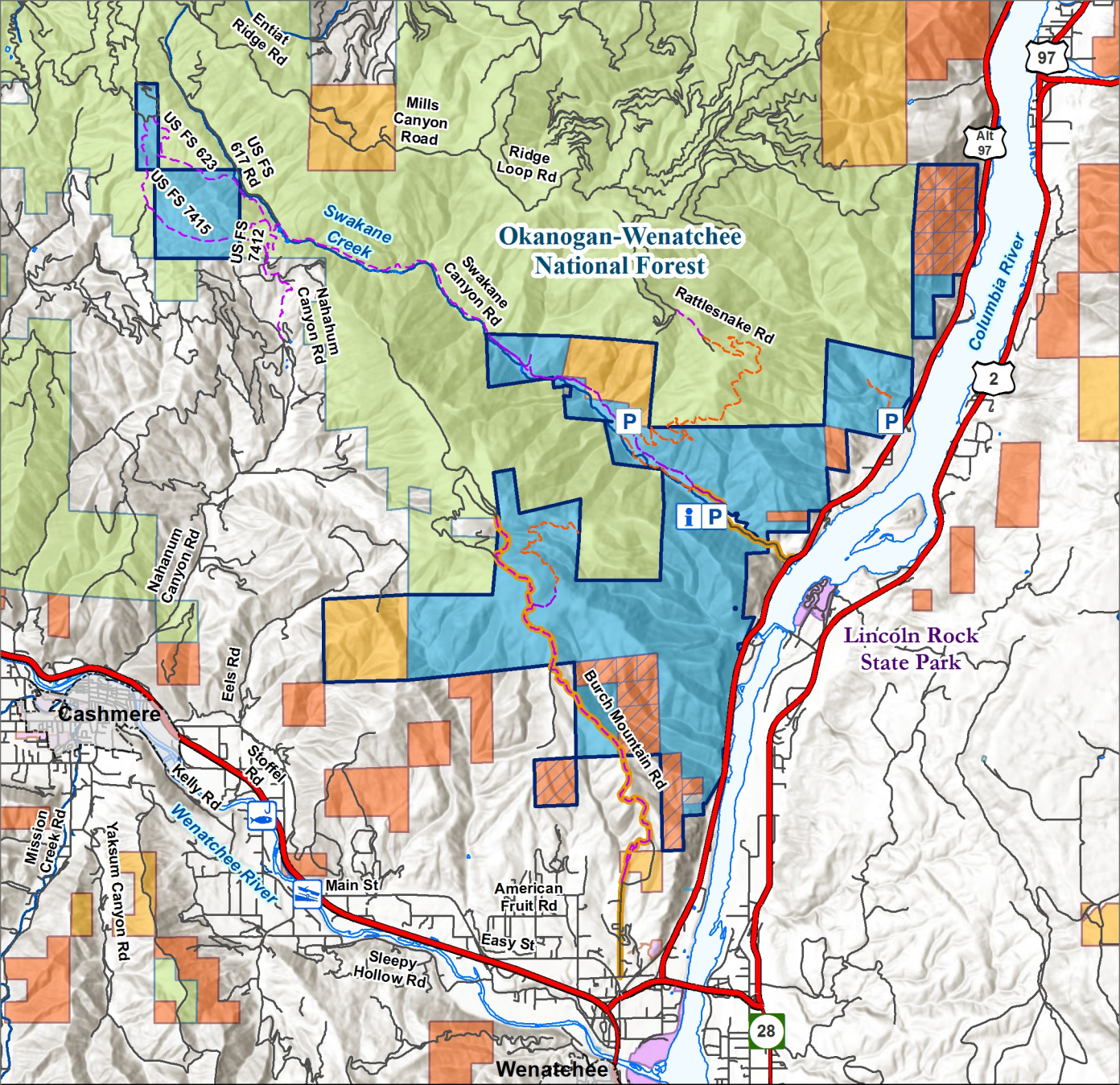
-  Wildlife Area Boundary
-  Owned by WDFW
-  Managed by WDFW
-  Boat Launch
-  Restroom
-  Fishing Access

-  USFS
-  BLM
-  DNR

-  US Highway
-  State Route
-  Road
-  Administrative Use Only
-  Primary Access Road

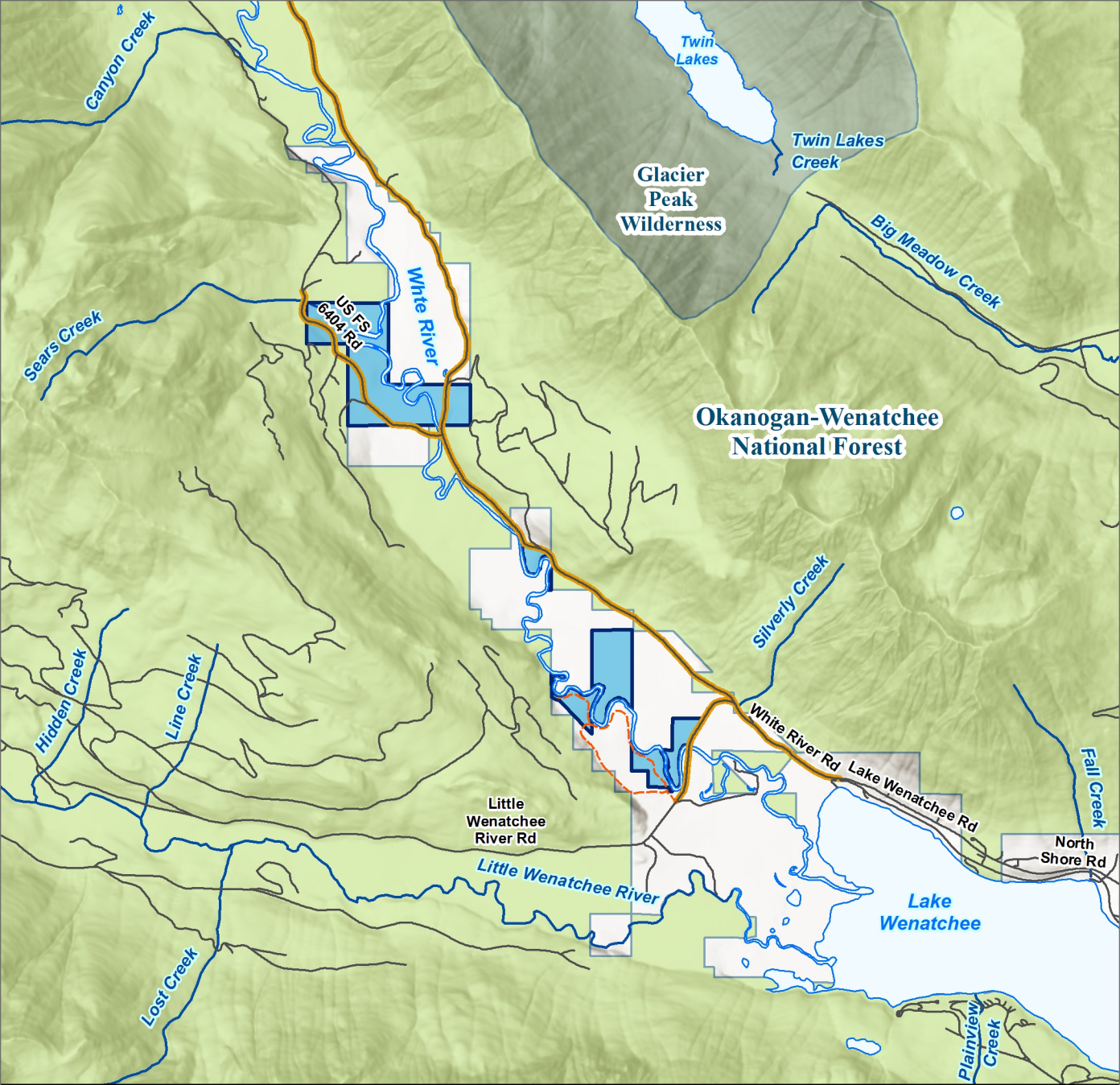
-  Lake, Pond, or Wide River
-  Swamp or







Swakane Unit



- | | | | |
|------------------------|-------------------|-------------------------|---------------------------|
| Wildlife Area Boundary | USFS | US Highway | Perennial Creek |
| Owned by WDFW | BLM | State Route | Lake, Pond, or Wide River |
| Managed by WDFW | DNR | Road | Swamp or Marsh |
| Boat Launch | Other State Land | Primitive Road | 0 0.5 Miles |
| Parking Lot | Municipal | Administrative Use Only | |
| Fishing Access | Educational kiosk | Primary Access Road | |








**Okanogan-Wenatchee
National Forest**

White River Unit

-  Wildlife Area Boundary
-  Owned by WDFW

-  US FS Wilderness
-  USFS

-  Administrative Use Only
-  Road
-  Primary Access Road

-  Perennial Creek
-  Lake, Pond, or Wide River



8/17/2017