



WASHINGTON DEPARTMENT OF FISH AND WILDLIFE

KETTLE RIVER ACCESS DEVELOPMENT FY:A684:18-1

INDEX

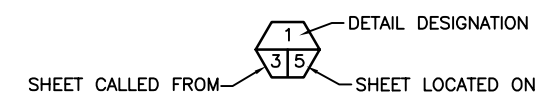
SHEET NO.

1. COVER SHEET
2. STATE & VICINITY MAP
3. NORTH ACCESS SITE PLAN
4. NORTH GRAVEL PARKING LOT SITE AND DETAILS
5. WILDLIFE VIEW BLIND AND GEOWEB DETAILS
6. CXT "GUNNISON" VAULT TOILET DETAILS
7. SOUTH ACCESS SITE PLAN

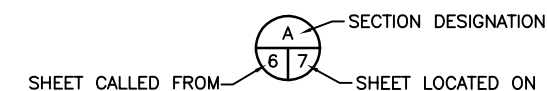
ABBREVIATIONS

APPROX	-	APPROXIMATELY
CLR	-	CLEARANCE
CONC	-	CONCRETE
CSBC	-	CRUSHED SURFACE BASE COURSE
CSTC	-	CRUSHED SURFACE TOP COURSE
DIA	-	DIAMETER
ELEV	-	ELEVATION
OD	-	OUTSIDE DIAMETER
MAX	-	MAXIMUM
REQ'D	-	REQUIRED
SEC	-	SECTION
SPEC'S	-	PROJECT SPECIFICATIONS
TYP	-	TYPICAL
WS	-	WATER SURFACE

SHEET SYMBOLS



DETAIL



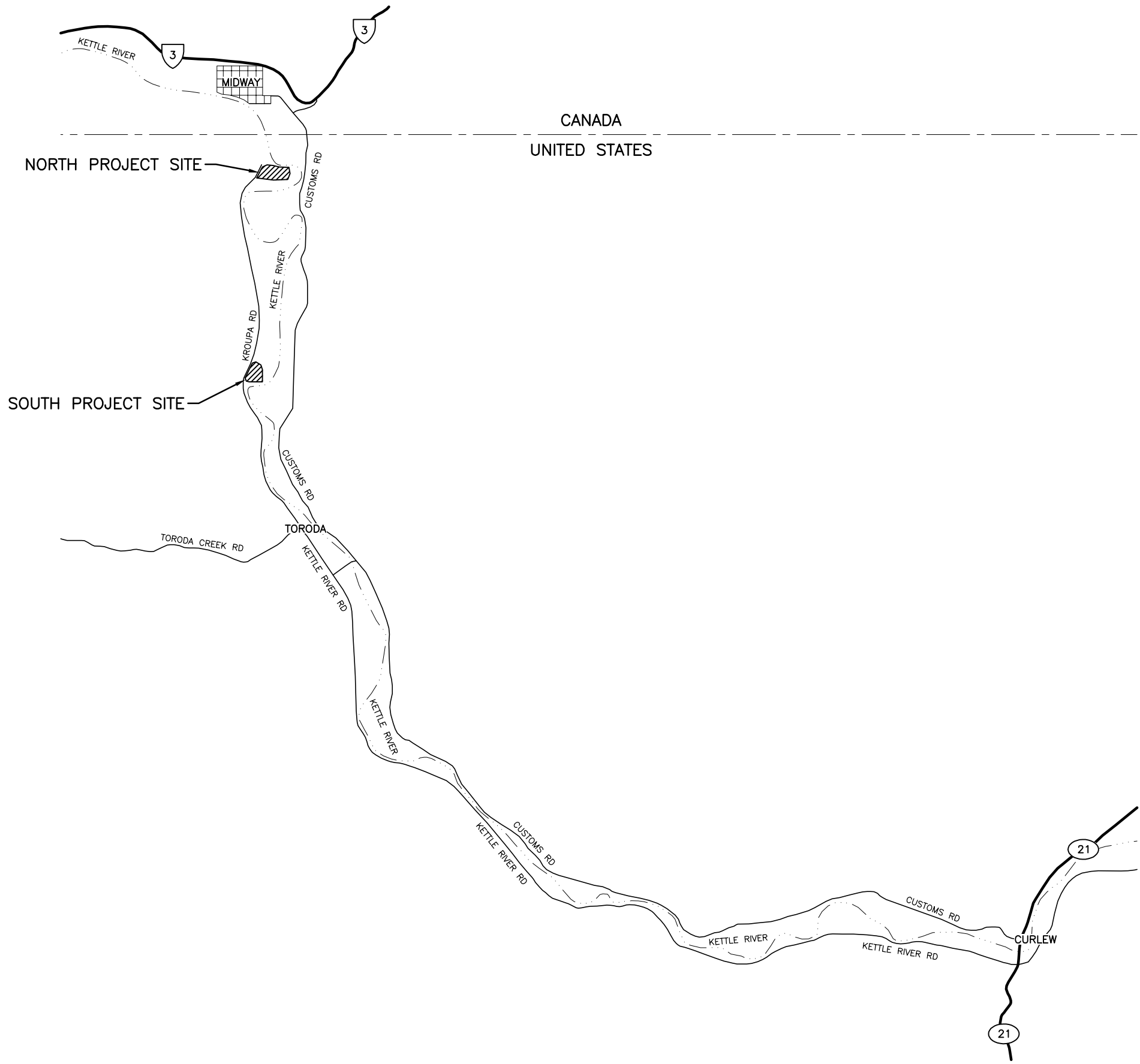
SECTION



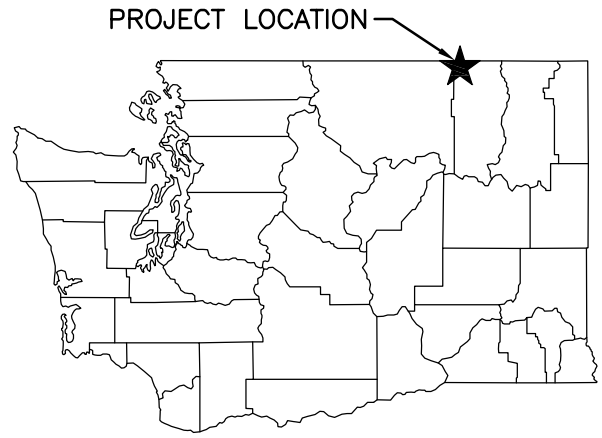
NOTE REFERENCE

REFERENCE DESIGNATION TO NOTE
OR A PART OR MATERIAL IN A
SCHEDULE/TABLE

PROJECT NO. FY:A684:18-1	
SHEET	OF
1	7



VICINITY MAP
NOT TO SCALE



STATE MAP
NOT TO SCALE

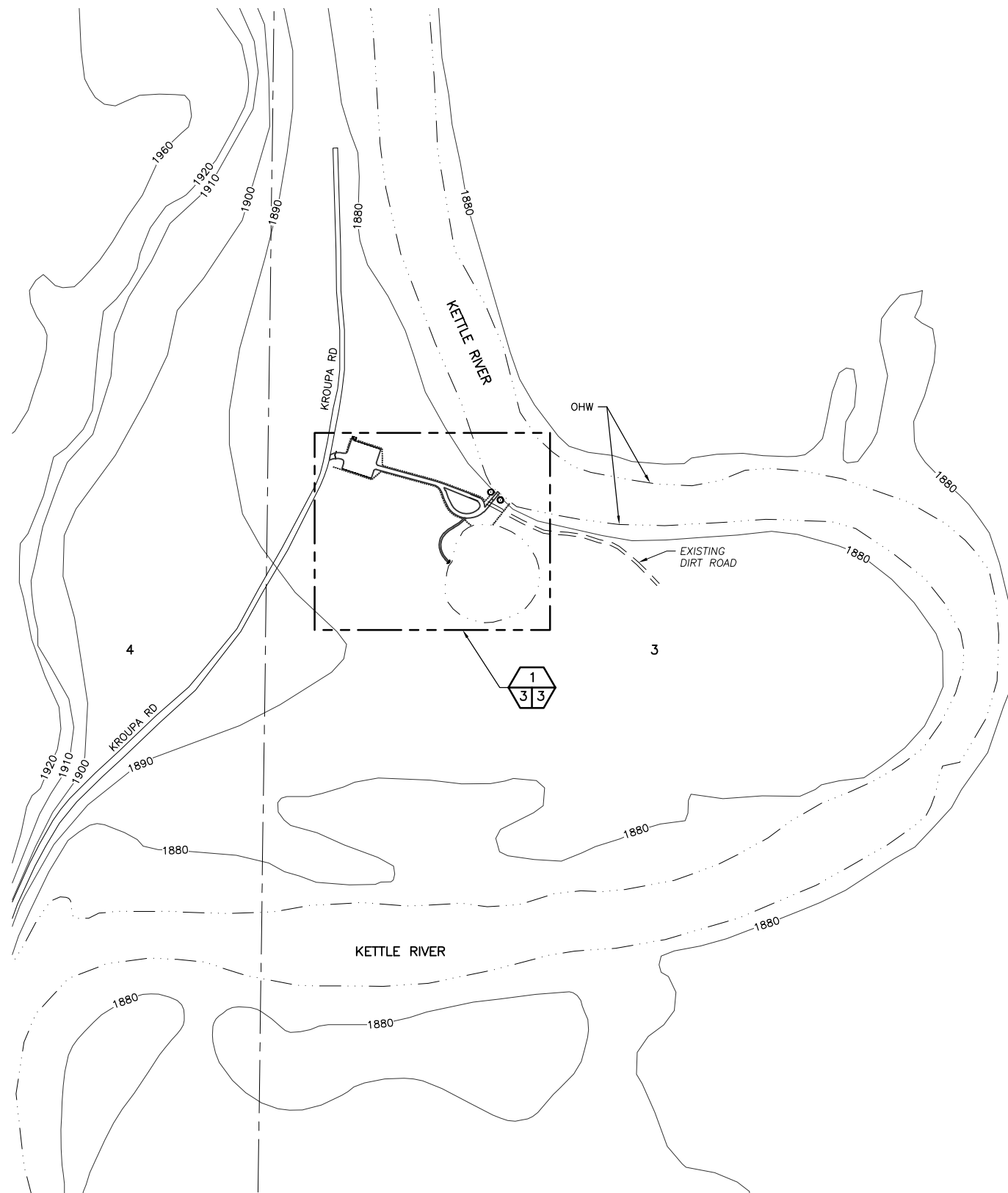
WASHINGTON STATE
DEPARTMENT OF FISH AND WILDLIFE

SYM	DATE	REVISION DESCRIPTION	BY
APPROVED AND RELEASED FOR CONSTRUCTION			
CHIEF ENGINEER	DATE	DESIGNED BY	J. HANSEN
PROGRAM	DATE	CHECKED BY	NWW
		DRAWN BY	NDB
		DATE	07/09/2018

0 ——— 1"
BAR MEASURES
ONE INCH ON
ORIGINAL DRAWINGS

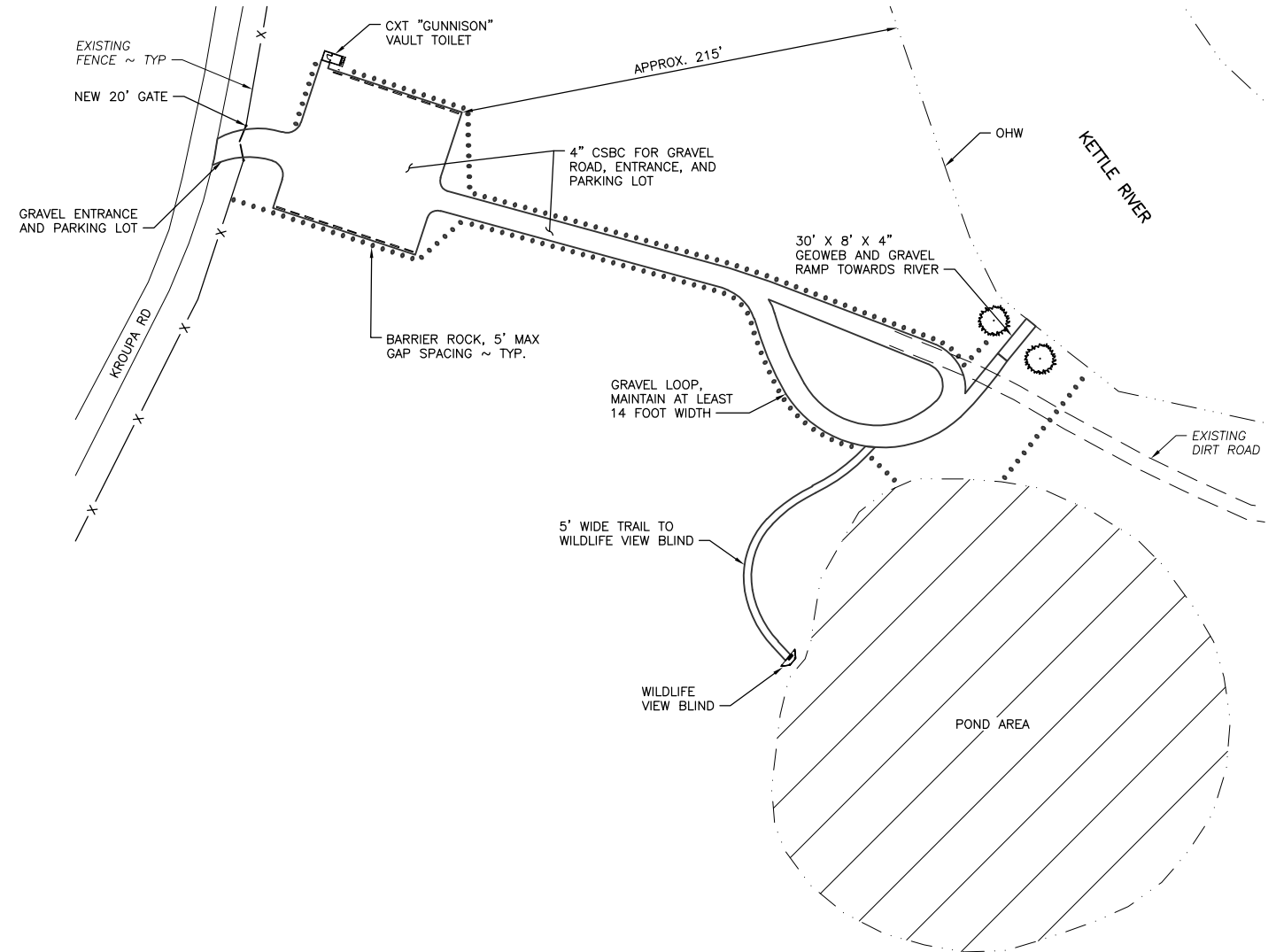
KETTLE RIVER
ACCESS DEVELOPMENT
STATE & VICINITY MAP

PROJECT NO. FY:A684:18-1	
SHEET	OF
2	7



T. 40 N., R. 32 E.

NORTH SITE
NOT TO SCALE



DETAIL
NOT TO SCALE

NOTE:

- ENGINEER TO STAKE ALL WORK AREAS IN THE FIELD.
- GRAVEL RAMP SHALL BE GRADED IN THE DRY. NO GRADING BELOW OHW. LOCATE RAMP BETWEEN TREES AS STAKED IN THE FIELD.

ESTIMATED CUT AND FILL QUANTITIES FOR NORTH SITE				
MATERIAL	SURFACE AREA	VOLUME CUT (CU. YD.)	VOLUME FILL (CU. YD.)	NET TOTAL (CU. YD.)
ENTRANCE	1,010 SF	15	13	-2
PARKING	10,000 SF	50	112	62
ROAD	13,535 SF	80	90	10
GEOWEB	240 SF	20	12	-8
TRAIL AND VIEW BLIND	985 SF	10	12	2
			TOTAL	64 (FILL)

WASHINGTON STATE
DEPARTMENT OF FISH AND WILDLIFE

SYM	DATE	REVISION DESCRIPTION	BY
APPROVED AND RELEASED FOR CONSTRUCTION			
CHIEF ENGINEER	DATE:		
PROGRAM	DATE:		

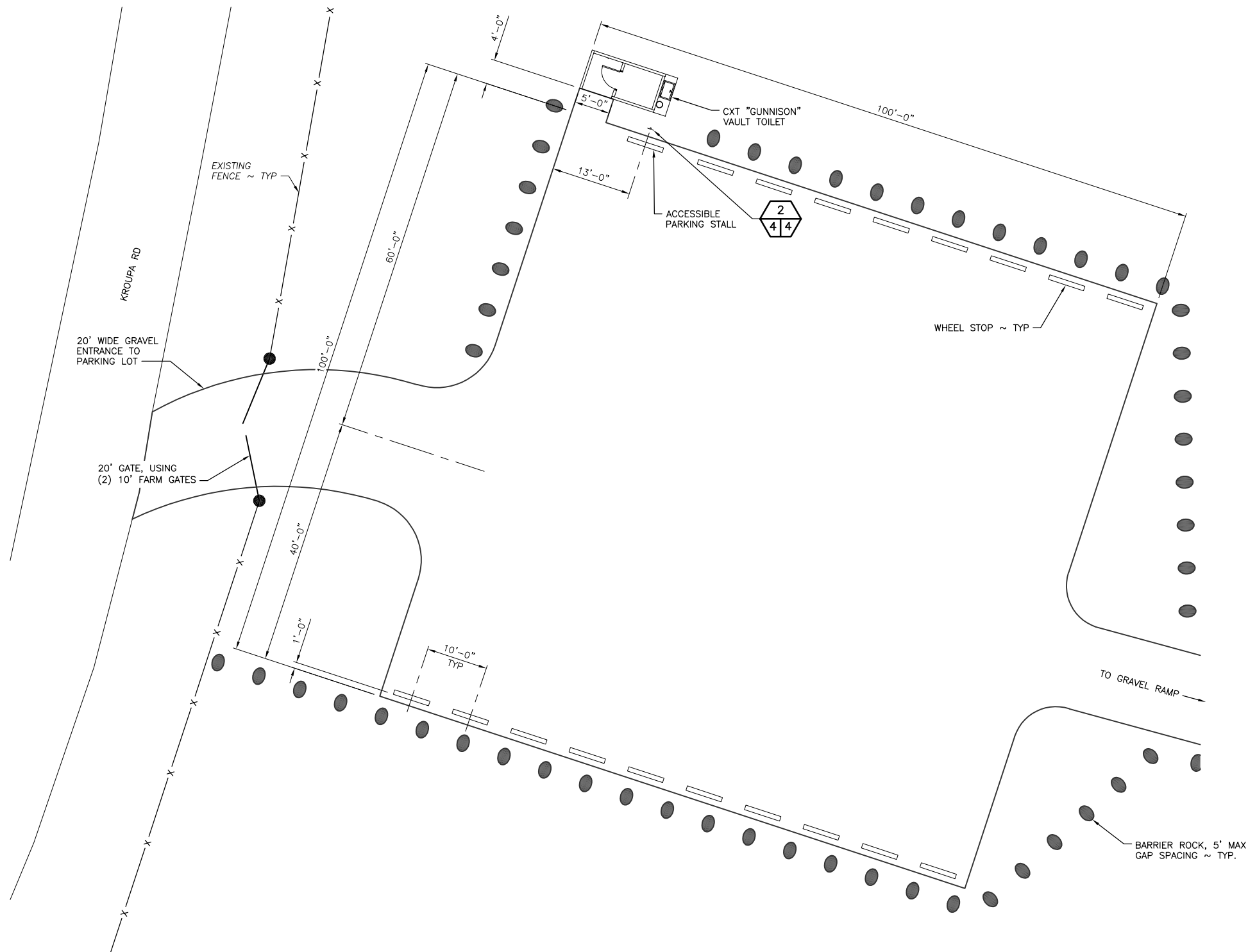
0 ——— 1"
BAR MEASURES
ONE INCH ON
ORIGINAL DRAWINGS

DESIGNED BY J. HANSEN
CHECKED BY NWW
DRAWN BY NDB
DATE 07/09/2018

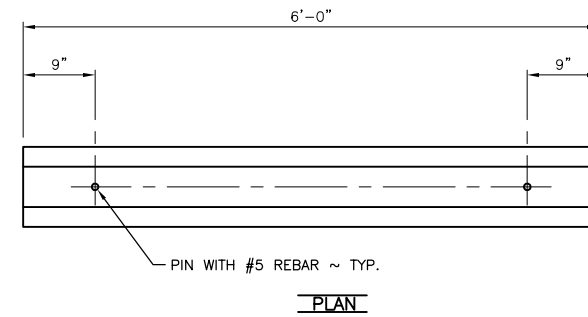
KETTLE RIVER
ACCESS DEVELOPMENT
NORTH ACCESS SITE PLAN

PROJECT NO.
FY:A684:18-1

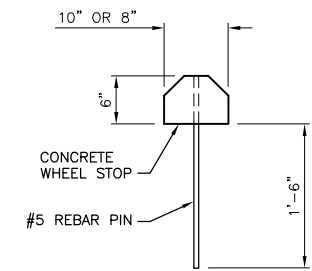
SHEET OF
3 7



GRAVEL PARKING SITE
NOT TO SCALE

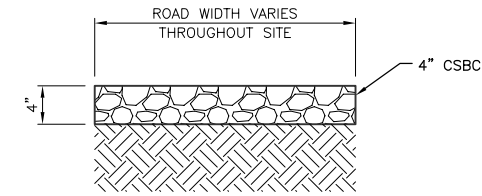


PLAN

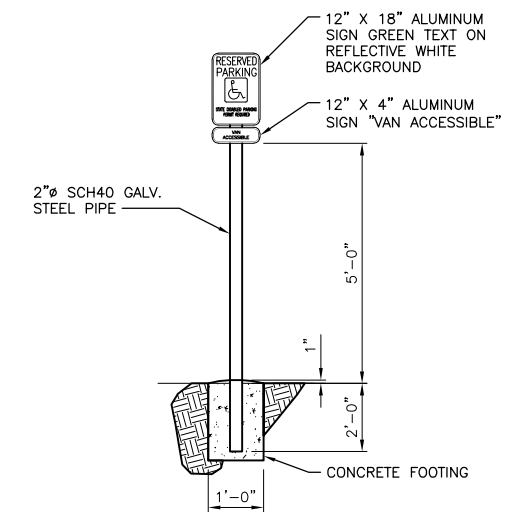


ELEVATION

WHEEL STOP
NOT TO SCALE



TYPICAL GRAVEL SECTION
NOT TO SCALE



ADA PARKING SIGN
NOT TO SCALE

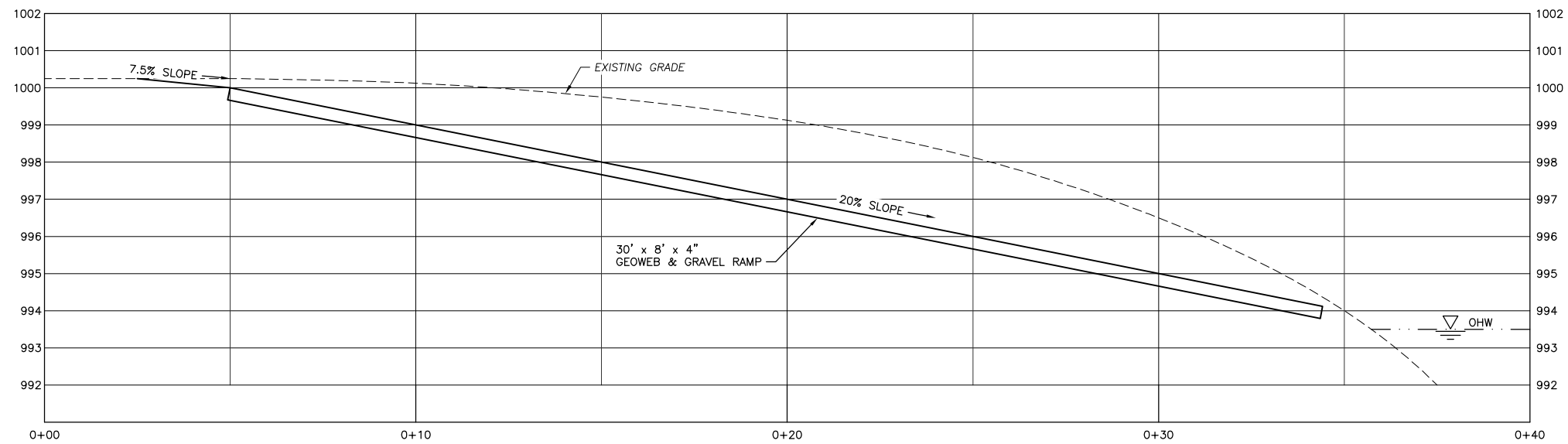
WASHINGTON STATE
DEPARTMENT OF FISH AND WILDLIFE

SYM	DATE	REVISION DESCRIPTION	BY
APPROVED AND RELEASED FOR CONSTRUCTION			
CHIEF ENGINEER		DATE:	DESIGNED BY <u>J. HANSEN</u>
PROGRAM		DATE:	CHECKED BY <u>NWW</u>
			DRAWN BY <u>NDB</u>
			DATE <u>07/09/2018</u>

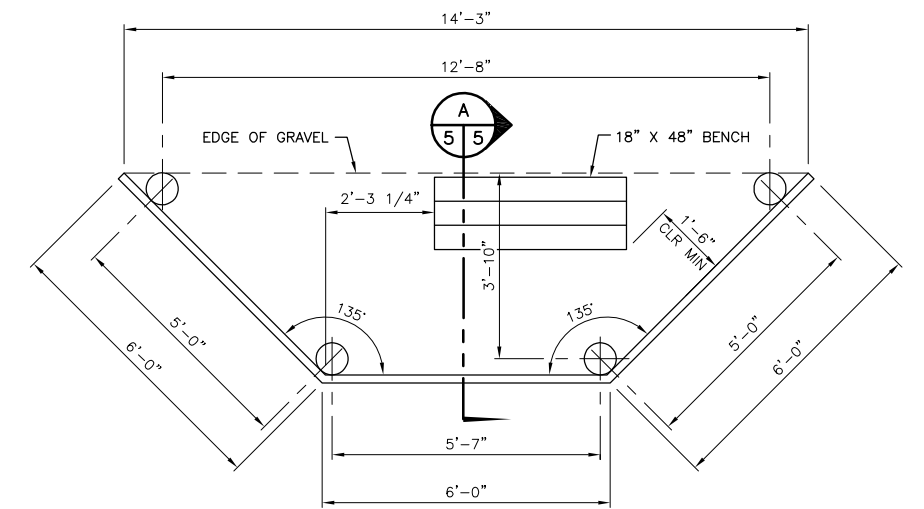
KETTLE RIVER
ACCESS DEVELOPMENT
NORTH GRAVEL PARKING
LOT SITE AND DETAILS

PROJECT NO.
FY:A684:18-1

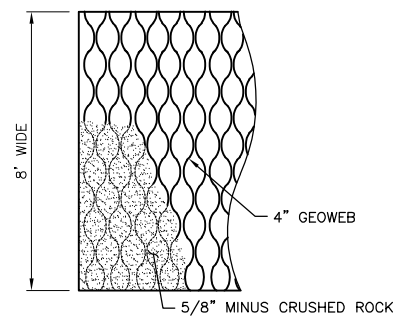
SHEET **4** OF **7**



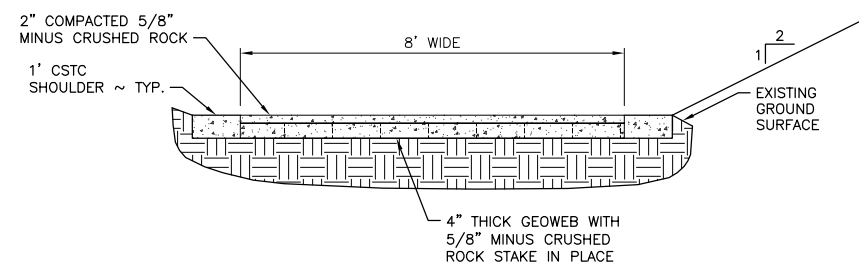
GEOWEB & GRAVEL RAMP PROFILE
SCALE: 1" = 2'-0"



PLAN

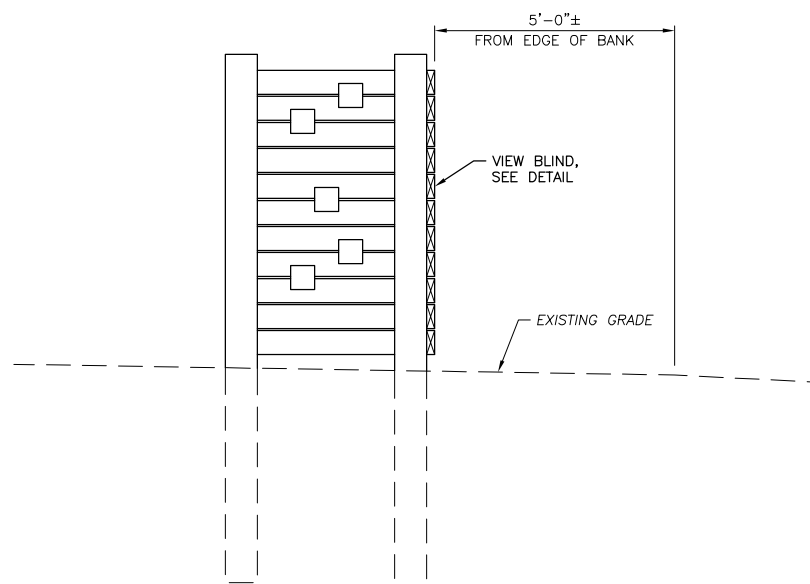


PLAN

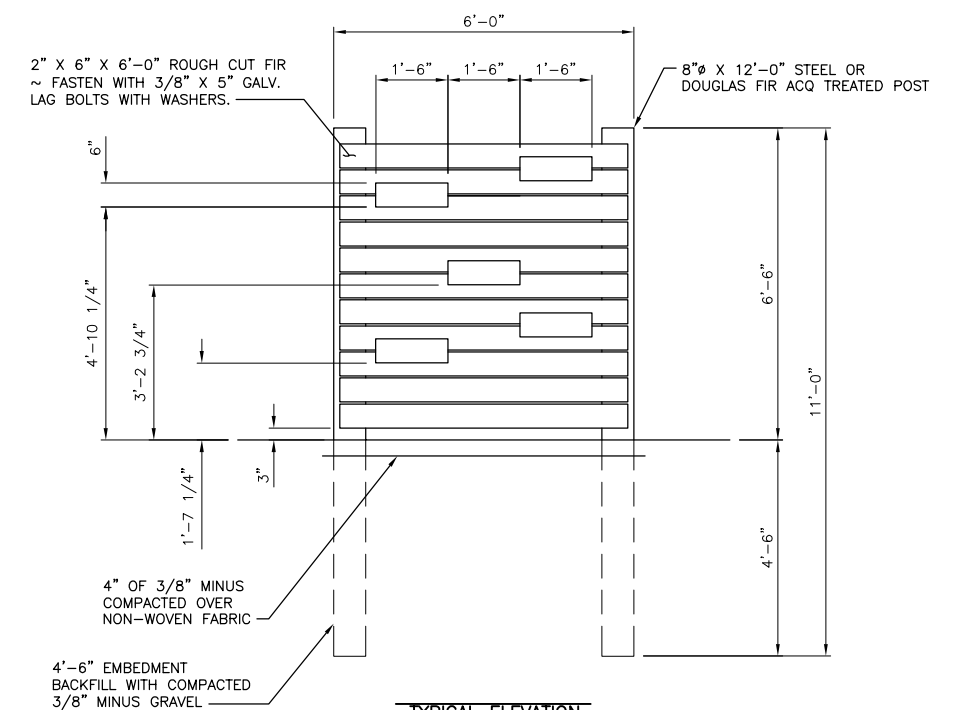


SECTION

GEOWEB & GRAVEL RAMP
NOT TO SCALE



SECTION



TYPICAL ELEVATION

VIEW BLIND

SCALE: 1/2" = 1'-0"

WASHINGTON STATE
DEPARTMENT OF FISH AND WILDLIFE

SYM	DATE	REVISION DESCRIPTION	BY
APPROVED AND RELEASED FOR CONSTRUCTION			
CHIEF ENGINEER	DATE:		
PROGRAM	DATE:		

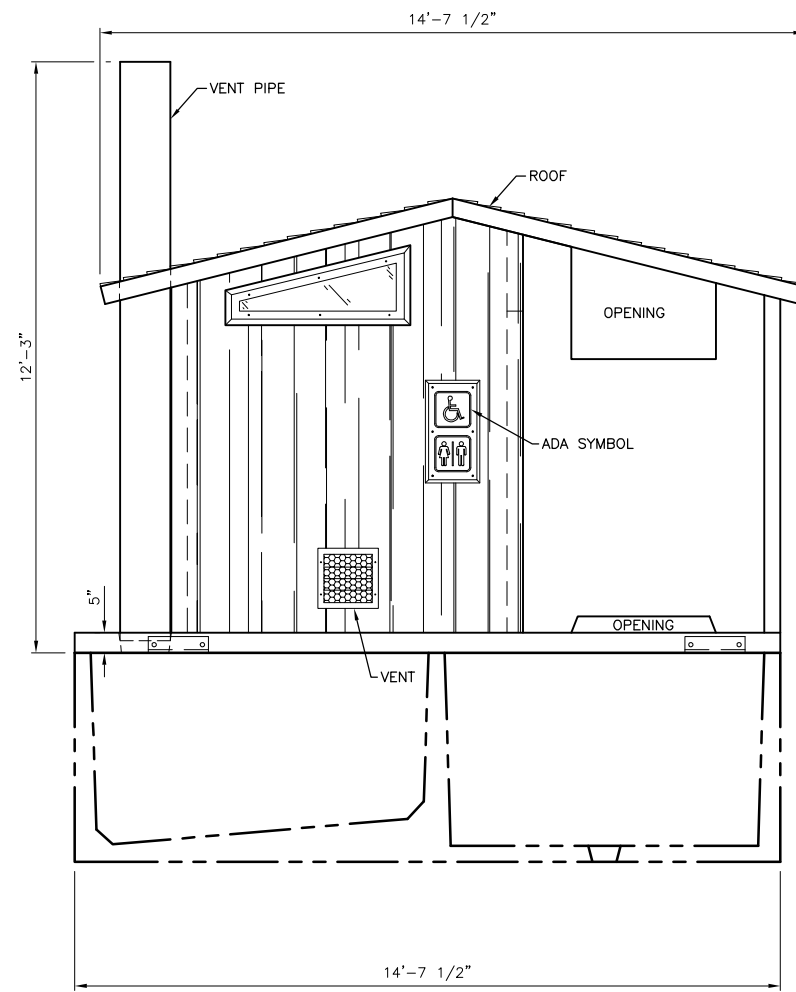
0 1"
BAR MEASURES
ONE INCH ON
ORIGINAL DRAWINGS

DESIGNED BY J. HANSEN
CHECKED BY NWW
DRAWN BY NDB
DATE 07/09/2018

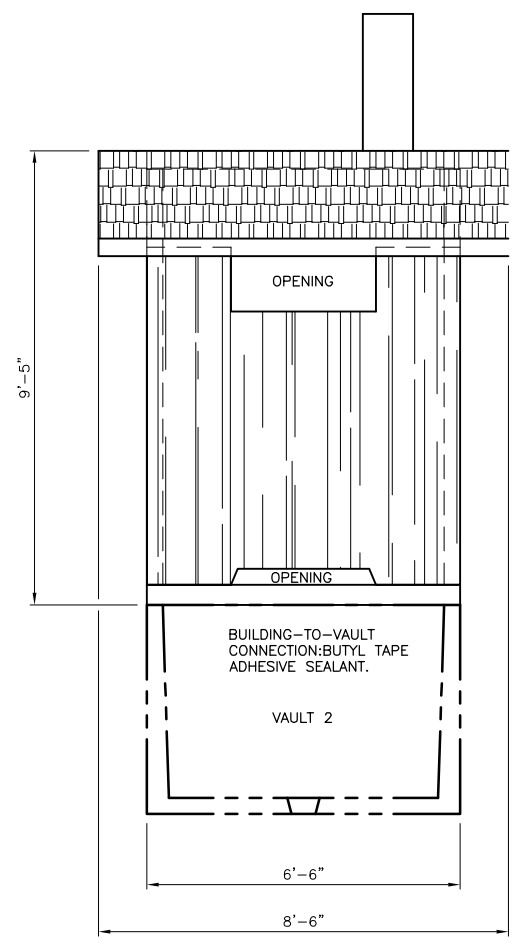
KETTLE RIVER
ACCESS DEVELOPMENT
WILDLIFE VIEW BLIND
AND GEOWEB DETAILS

PROJECT NO.
FY:A684:18-1

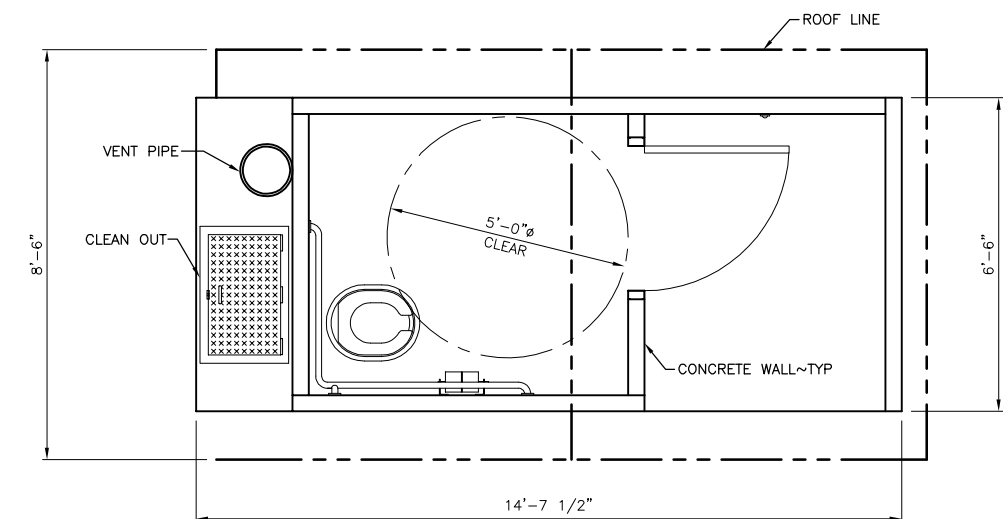
SHEET 5 OF 7



FRONT ELEVATION
NOT TO SCALE



SIDE ELEVATION
NOT TO SCALE



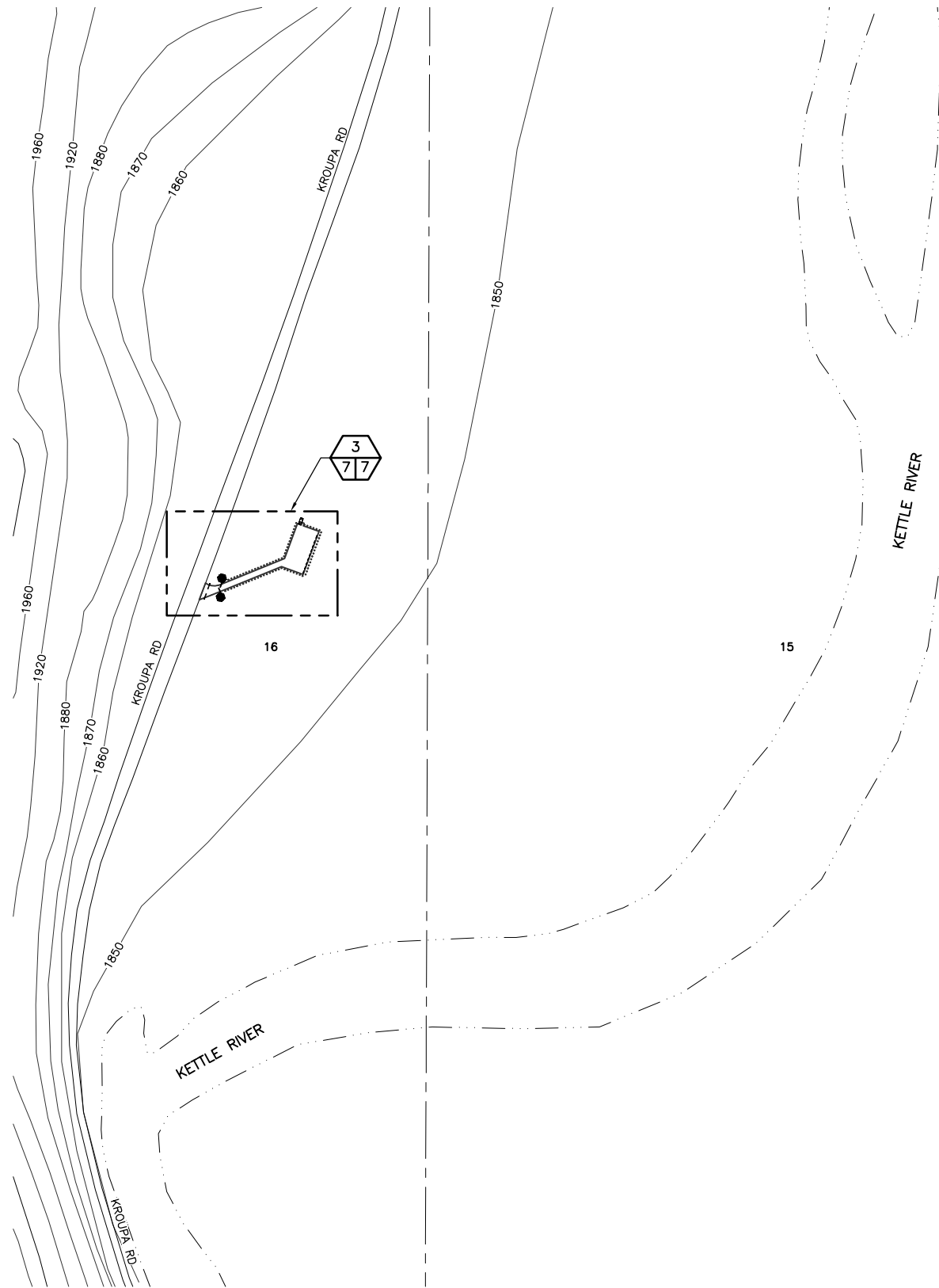
CXT VAULT TOILET PLAN
NOT TO SCALE

WASHINGTON STATE
DEPARTMENT OF FISH AND WILDLIFE

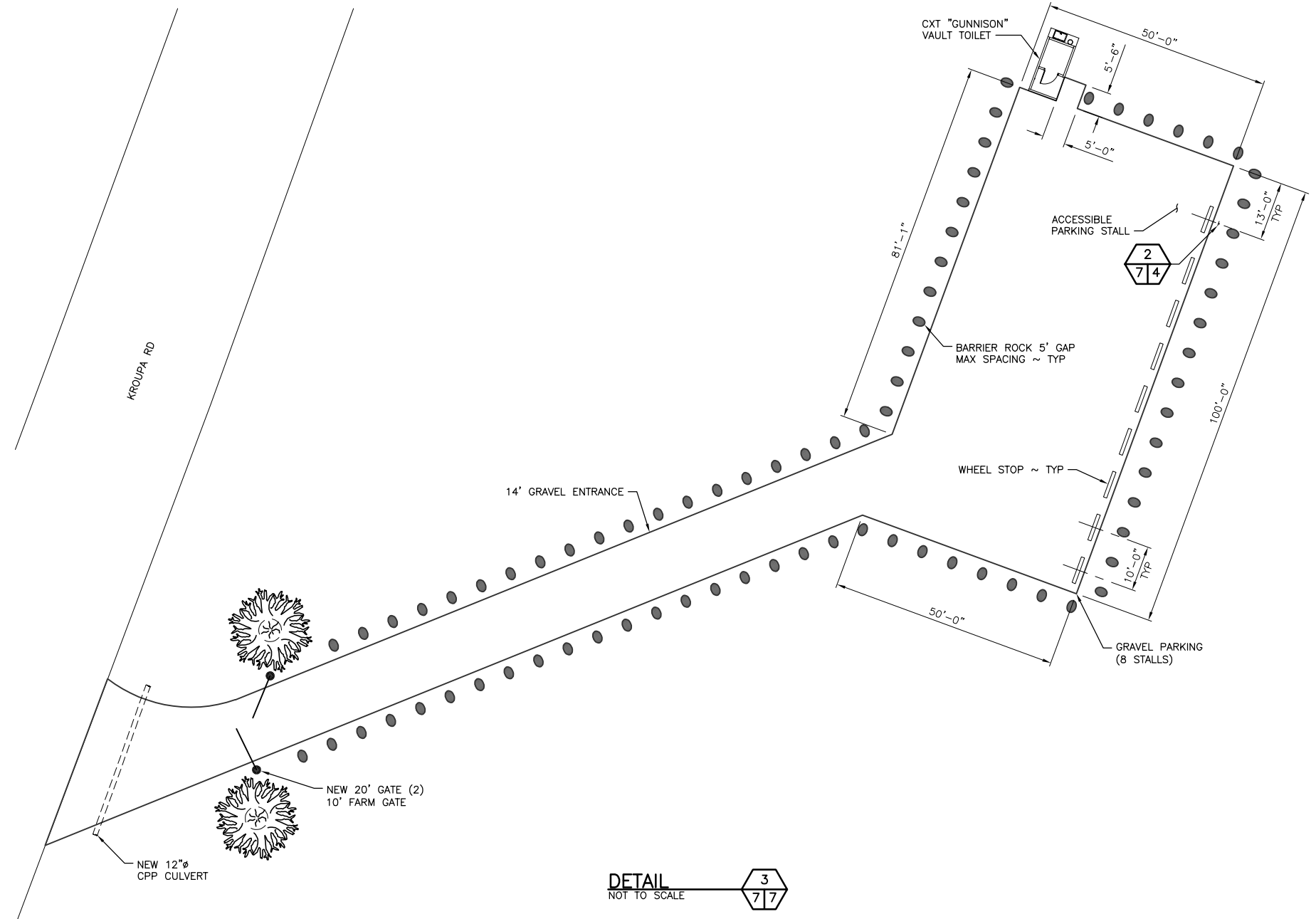
0 — 1"		BAR MEASURES ONE INCH ON ORIGINAL DRAWINGS	
SYM	DATE	REVISION DESCRIPTION	BY
APPROVED AND RELEASED FOR CONSTRUCTION			
CHIEF ENGINEER	DATE:		
PROGRAM	DATE:		
		DESIGNED BY	J. HANSEN
		CHECKED BY	NWW
		DRAWN BY	NDB
		DATE	07/09/2018

KETTLE RIVER
ACCESS DEVELOPMENT
CXT "GUNNISON"
VAULT TOILET DETAILS

PROJECT NO. FY:A684:18-1	
SHEET	OF
6	7



SOUTH SITE
NOT TO SCALE



DETAIL
NOT TO SCALE

- NOTE:**
- ENGINEER TO STAKE ALL WORK AREAS IN THE FIELD.
 - SEE PAGE 4 FOR DETAILS AND SECTIONS OF PARKING LOT.
 - ALL TREES GREATER THAN 8" TO REMAIN WITH EXCEPTION OF LEANING "DANGER" TREES.

ESTIMATED CUT AND FILL QUANTITIES FOR SOUTH SITE				
MATERIAL	SURFACE AREA	VOLUME CUT (CU. YD.)	VOLUME FILL (CU. YD.)	NET TOTAL (CU. YD.)
ENTRANCE	2,920 SF	30	30	0
PARKING	5,000 SF	50	50	0

WASHINGTON STATE
DEPARTMENT OF FISH AND WILDLIFE

SYM	DATE	REVISION DESCRIPTION	BY
APPROVED AND RELEASED FOR CONSTRUCTION			
CHIEF ENGINEER	DATE:		
PROGRAM	DATE:		

0 ——— 1"
BAR MEASURES
ONE INCH ON
ORIGINAL DRAWINGS

DESIGNED BY J. HANSEN
CHECKED BY NWW
DRAWN BY NDB
DATE 07/09/2018

KETTLE RIVER
ACCESS DEVELOPMENT
SOUTH ACCESS SITE PLAN

PROJECT NO.
FY:A684:18-1

SHEET 7 OF 7