







**Figure 2. Project Area - Leque Island Estuary Restoration Project  
Snohomish County, Washington**





**LEGEND**

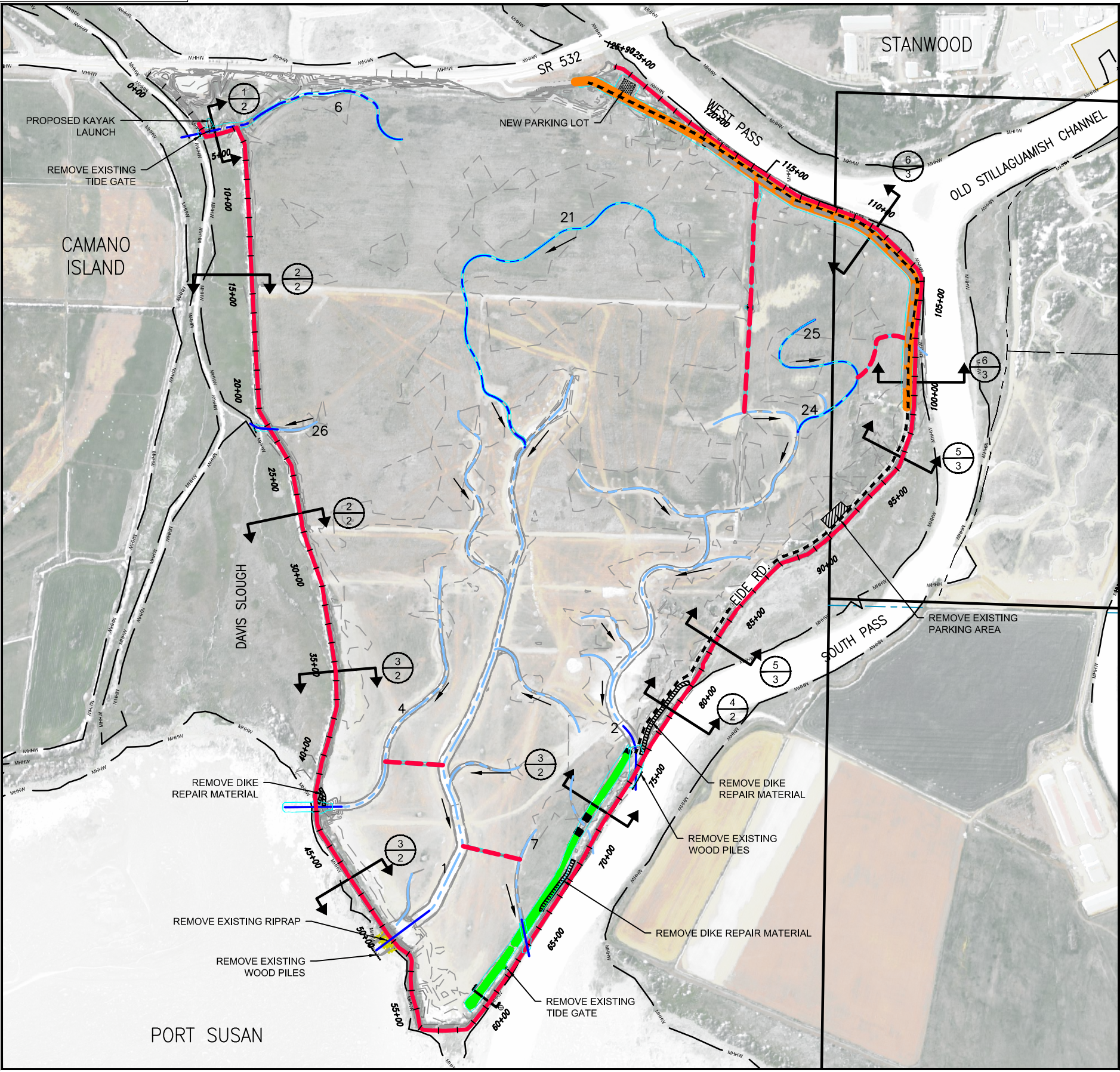
- EXISTING MAJOR CONTOUR
- EXISTING MINOR CONTOUR
- - - PROPERTY LINE
- - - MEAN HIGHER HIGH WATER (9.1 FEET (NAVD88))
- DAYLIGHT LINE/GRADING LIMITS

Quantities			
Activity	Length (LF)	Area (acres)	Volume (CY)
Excavate	12,220	6.87	31,300
Fill	2,760	3.38	24,035
Fill	2,170	0.87	2,622
Fill	--	1.16	5,005
Excavate	5,920	2.72	12,438
Excavate	995	0.41	--
Excavate/Fill*	5,090	2.34	--
Excavate/Fill*	--	0.16	--
Excavate	--	0.14	--
Fill	--	0.26	2,290

**LEGEND**

- REMOVE EXISTING DIKE
- CONSTRUCT NEW DIKE
- EXISTING DITCH
- FILL EXISTING DITCH / TIDAL CHANNEL
- FILL BORROW AREAS/DITCHES
- DITCH PLUG
- PHASE 1 TIDAL CHANNEL (EXISTING)
- PHASE 2 TIDAL CHANNEL (PROPOSED)
- 14 TIDAL CHANNEL NUMBER
- DIRECTION OF CHANNEL FLOW
- REMOVE DIKE REPAIR MATERIAL
- REMOVE EXISTING EIDE RD.
- REMOVE EXISTING PARKING AREA
- REMOVE EXISTING RIP RAP
- PROPOSED PARKING LOT
- ← REMOVE EXISTING TIDE GATE

\* Road/parking prism to be removed and backfilled.



**PRELIMINARY**

**Unauthorized Changes & Uses**  
The engineer preparing these plans will not be responsible for, or liable for, unauthorized changes to or uses of these plans. All changes must be in writing and must be approved by the preparer of these plans.



REVISIONS			
REV. NO.	DESCRIPTION	DATE	APPROVED



PROJECT NO. US-WA-62-4	DATE: 10/2018	DESIGNED BY: SWL
LEQUE ISLAND ESTUARY RESTORATION PROJECT PHASE II		DRAWN BY: FA
SITE PLAN		SURVEYED BY: JPS
		CHECKED BY:
		SHEET NO. 1 of 4