

Zoning

Legend

- Private Named
- US
- State
- Co. Asphalt
- Co. Concrete
- Co. BST
- Co. MagChloride
- Co. Gravel
- Co. Dirt
- Active
- Abandoned
- Trail
- Agricultural
- Recreational
- Local Business
- Commercial
- Industrial
- PublicFacilities
- Incorporated
- Residential
- Runway
- ApproachSurface
- PrimarySurface
- Zone1
- Zone2
- Zone3
- Zone4
- Zone5
- Zone6
- HorizontalSurface
- ConicalSurface
- Lake
- Stream
- County Boundaries
- Cities
- Township
- Section
- Transmission Lines

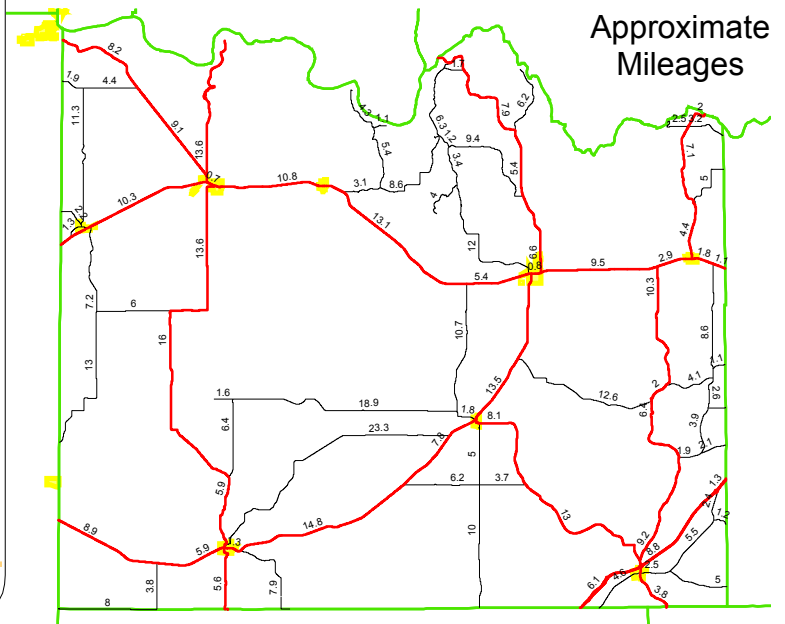
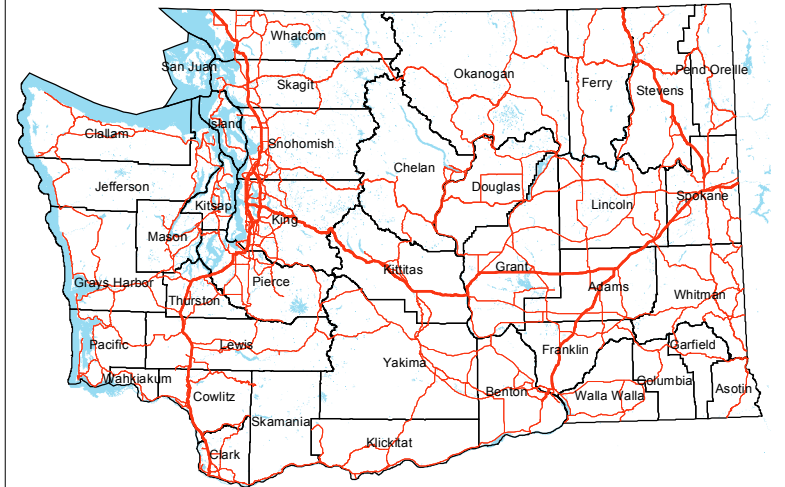
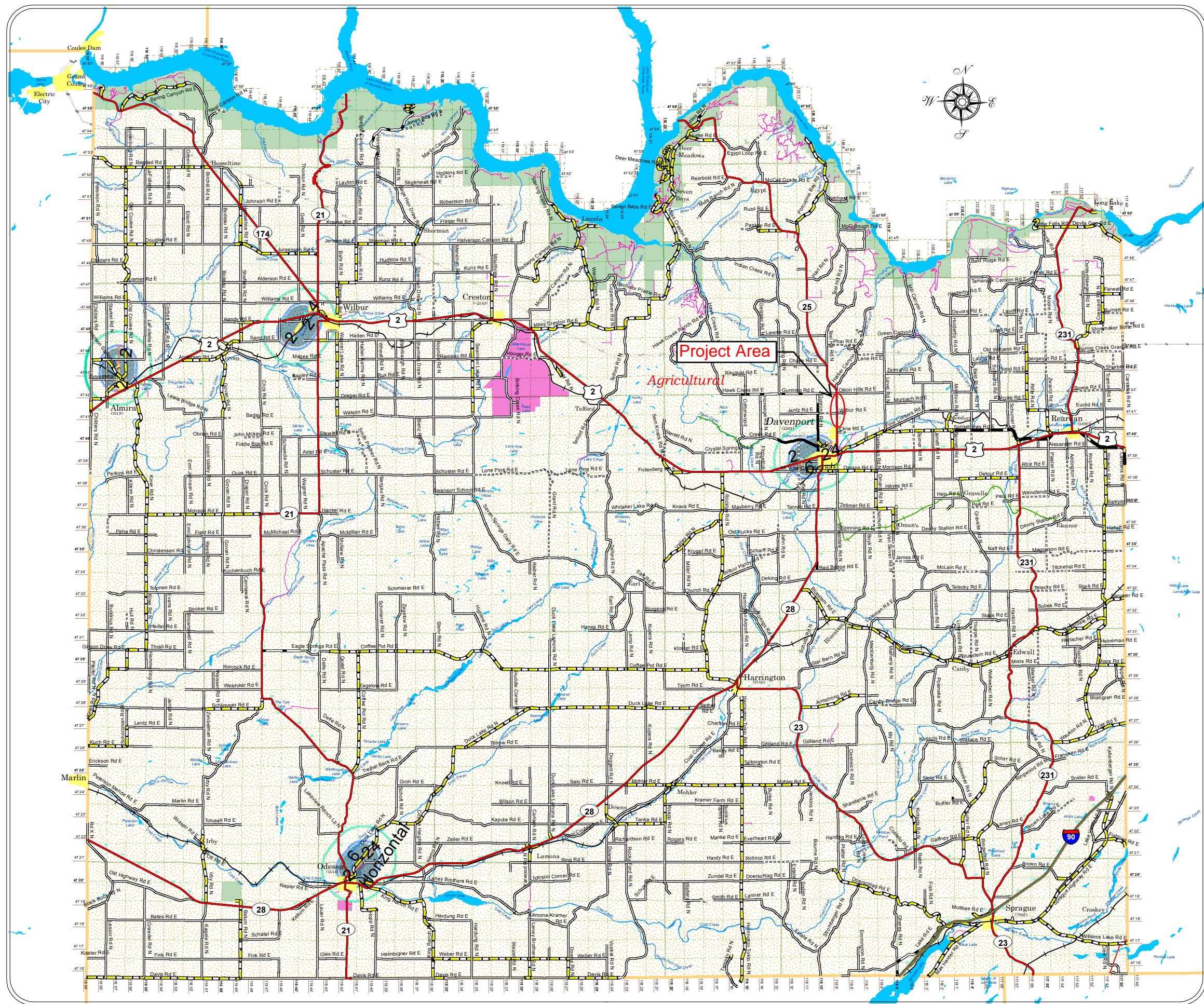
Lincoln County Washington

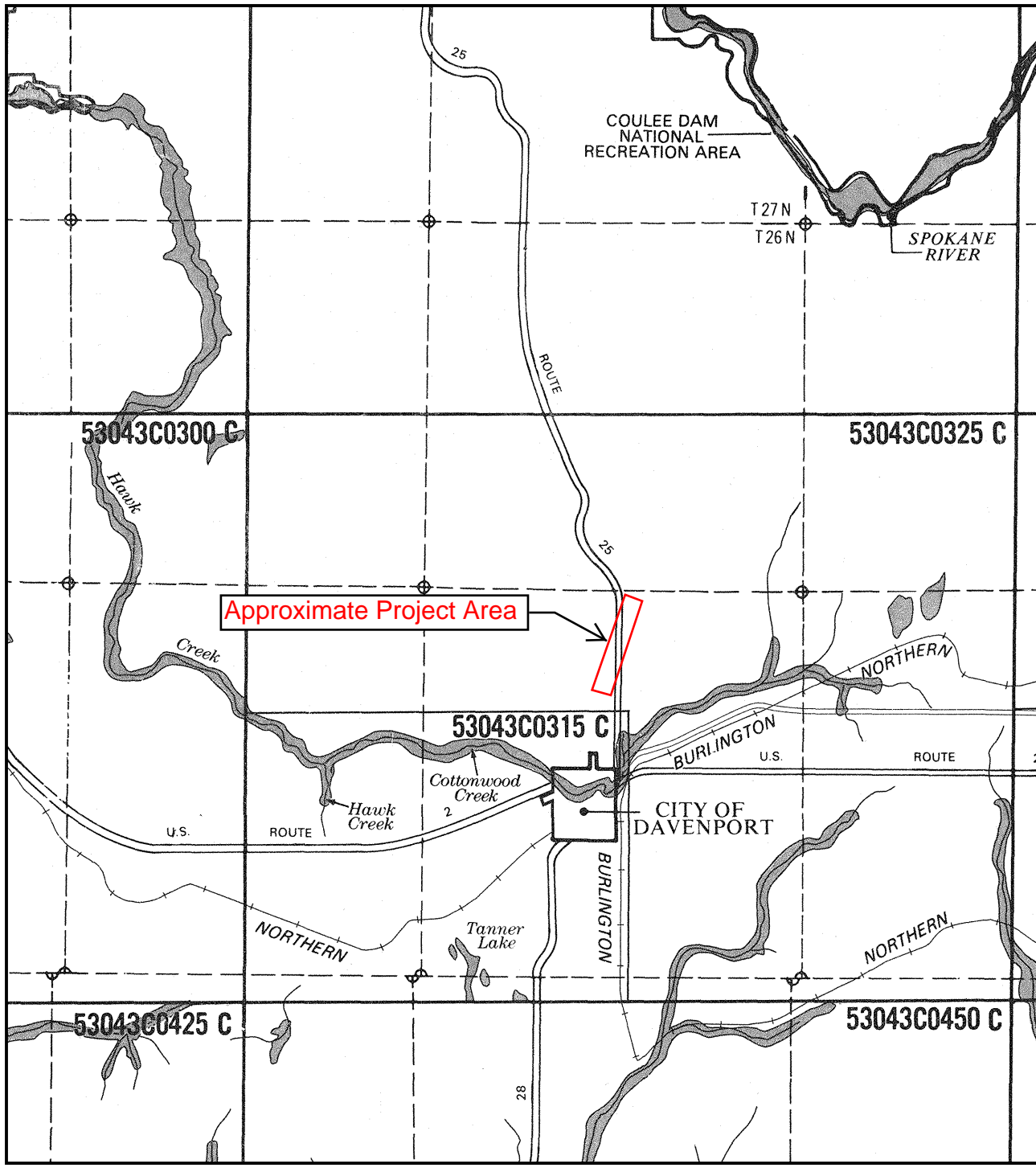
Disclaimer: This product is provided 'as is' without warranty of any kind, either expressed or implied, including, but not limited to, the implied warranties of merchantability and fitness for a particular use. Lincoln County will not be liable to the user of this product for any activity involving the product with respect to the following: (a) lost profits, lost savings, or any other consequential damages; (b) the fitness of the product for a particular purpose; or (c) use of the product or results obtained from use of the product.

Lincoln County cannot assure the reliability or suitability of this information for a particular purpose. Original data was compiled from various sources. Spatial information may not meet National Map Accuracy Standards though it is constantly being improved so that it will meet or exceed these standards. This information may be updated without notification.

Please respect private property rights. Do not trespass to access public lands. Land ownership is constantly changing and public lands that were public at the time these GIS datasets were updated may now be private. Please verify ownership with the County Assessor's Office. Many of the roads represented on this map are private and do not represent a public easement. These include Private Named, Private Unnamed, and Driveways. Please contact Courtney at Lincoln County Land Services for any questions regarding GIS mapping (509 725-7041, gs@co.lincoln.wa.us). Visit www.co.lincoln.wa.us for answers to a wide array of questions regarding Lincoln County.

Date: 7/10/2014





NATIONAL FLOOD INSURANCE PROGRAM

**FIRM
FLOOD INSURANCE RATE MAP**

LINCOLN COUNTY,
WASHINGTON AND
INCORPORATED AREAS

**MAP INDEX
and
STREET INDEX**

PANELS PRINTED: 25, 50, 75, 100, 125, 140,
150, 165, 175, 200, 225, 230, 235, 250, 275,
300, 315, 325, 330, 340, 345, 350, 375, 400,
425, 440, 450, 475, 500, 515, 525, 550, 575,
600, 625, 630, 650, 675, 700, 705, 725

MAP NUMBER
53043C0000

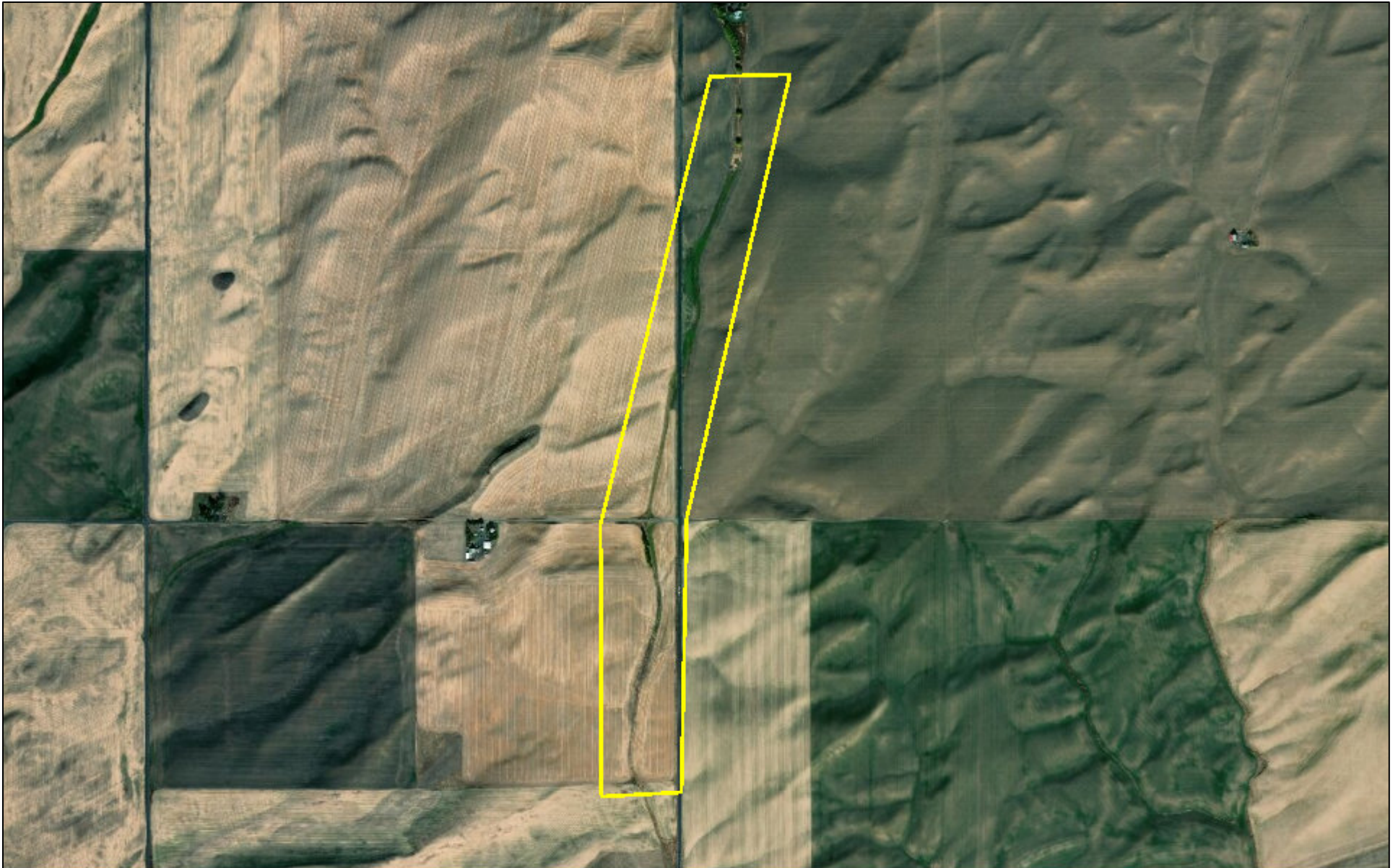
EFFECTIVE DATE:
SEPTEMBER 30, 1988










Federal Emergency Management Agency

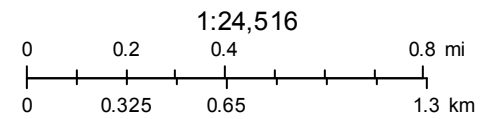
This is an official copy of a portion of the above referenced flood map. It was extracted using F-MIT On-Line. This map does not reflect changes or amendments which may have been made subsequent to the date on the title block. For the latest product information about National Flood Insurance Program flood maps check the FEMA Flood Map Store at www.msc.fema.gov

WDFW Test Map

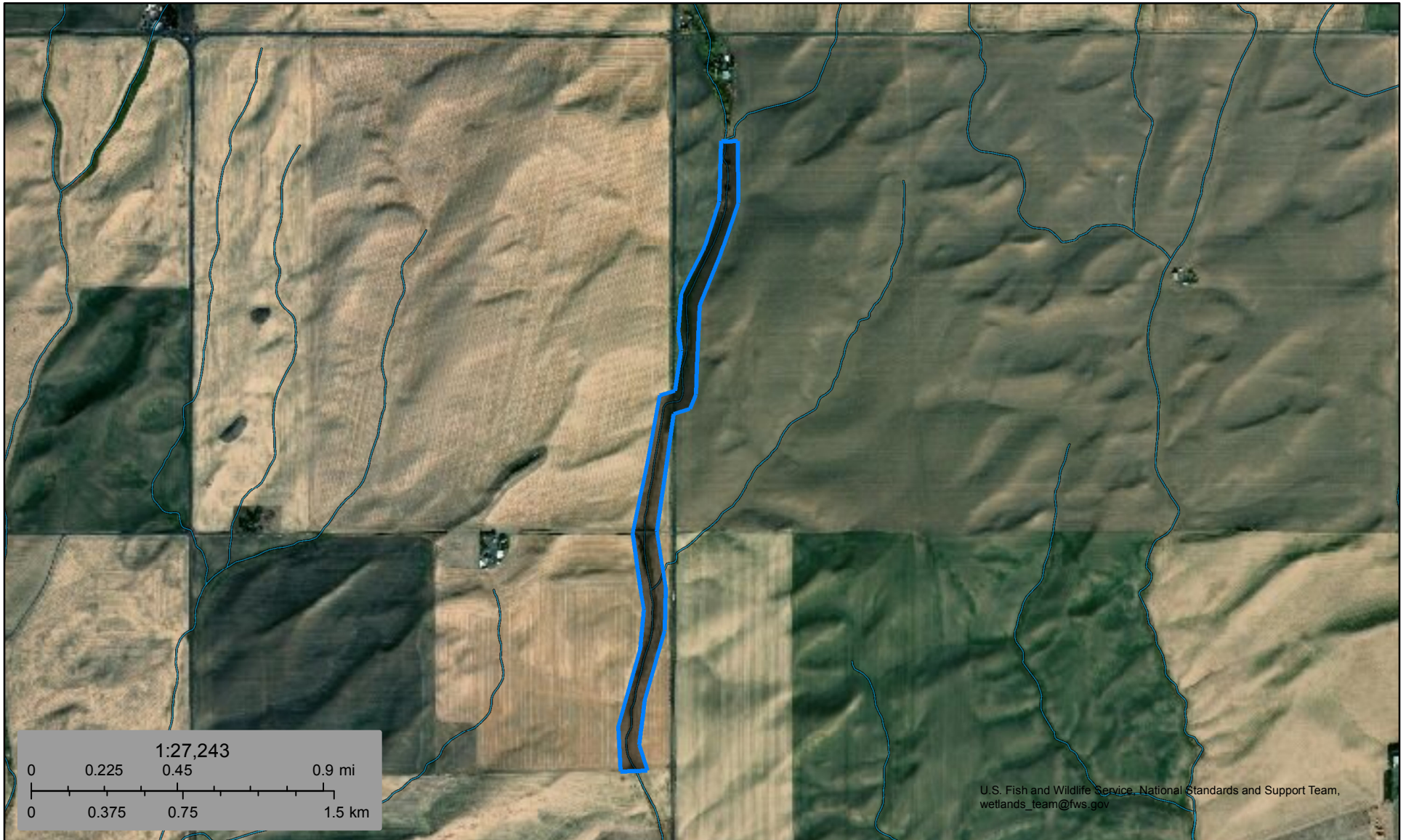


September 14, 2018

- | | | | | | |
|---|----------------------|---|---|---|----------|
|  | PHS Report Clip Area | POLY |  | QTR-TWP | |
|  | PT |  | AS MAPPED |  | TOWNSHIP |
|  | LN |  | SECTION | | |











Source: Esri, DigitalGlobe, GeoEye, Earthstar Geographics, CNES/Airbus DS, USDA, USGS, AeroGRID, IGN, and the GIS User Community

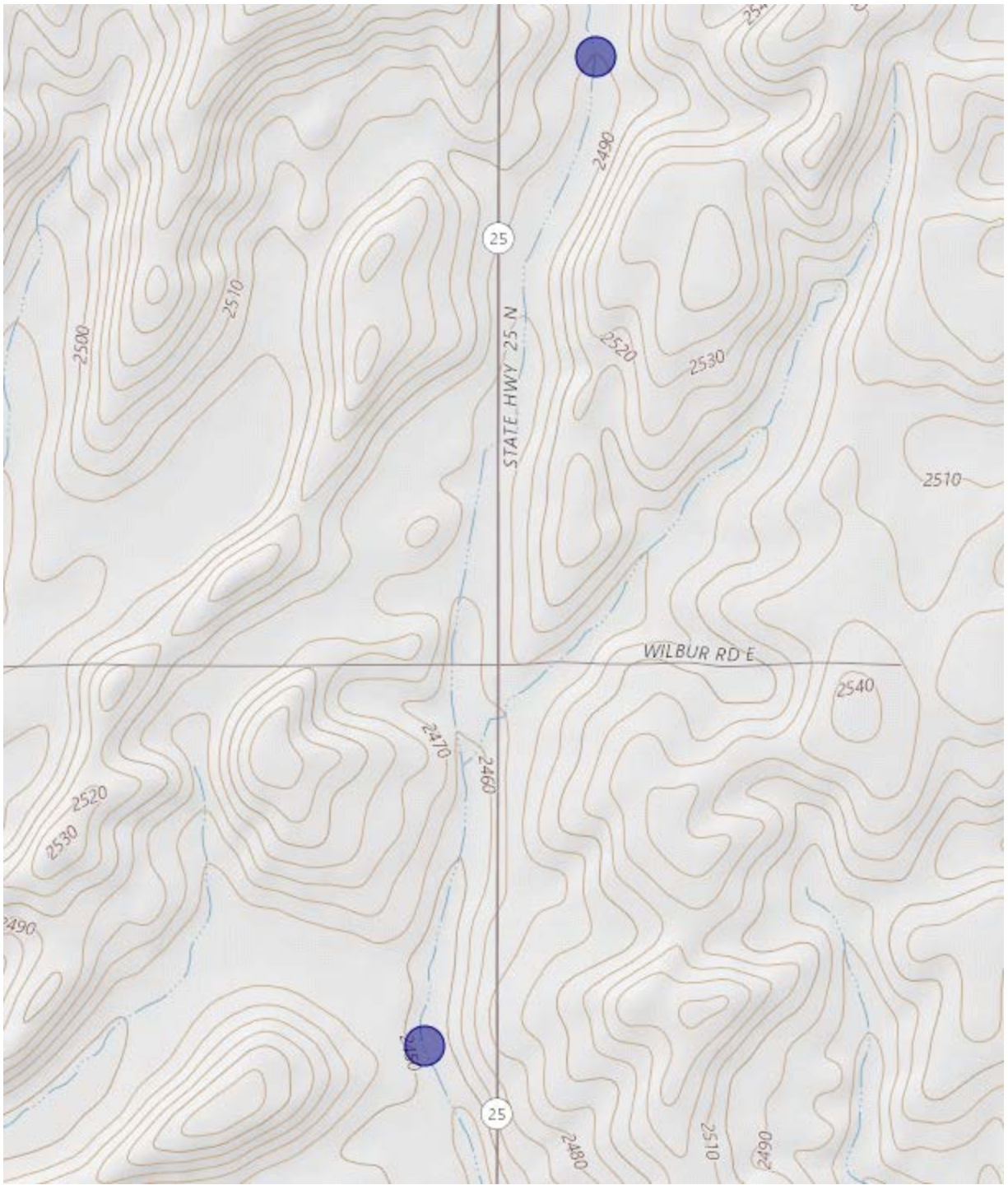


September 14, 2018

Wetlands

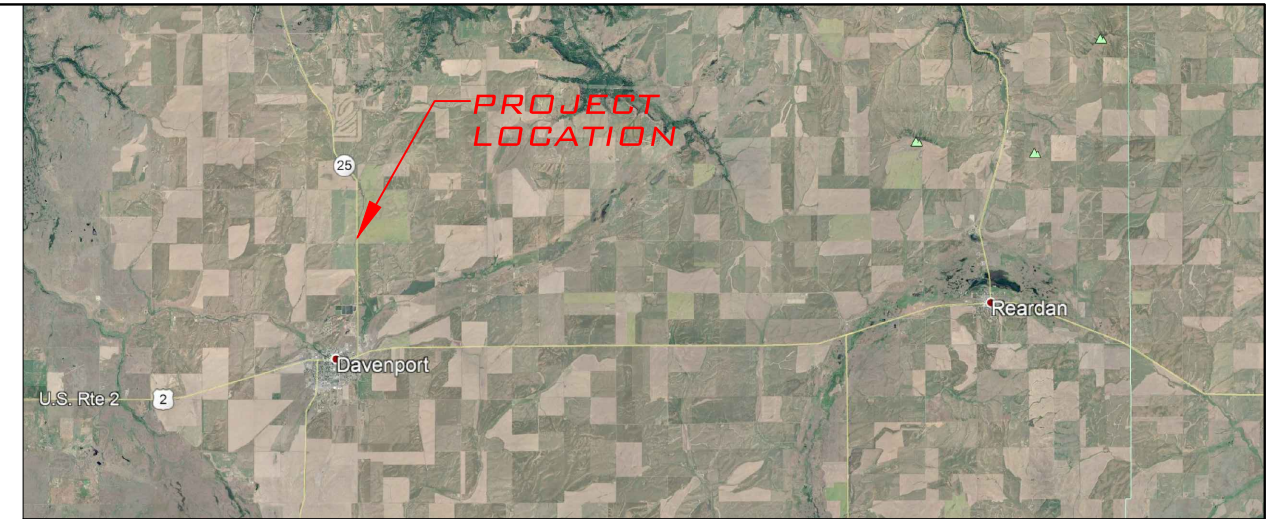
- | | | |
|--|---|--|
|  Estuarine and Marine Deepwater |  Freshwater Emergent Wetland |  Lake |
|  Estuarine and Marine Wetland |  Freshwater Forested/Shrub Wetland |  Other |
| |  Freshwater Pond |  Riverine |

This map is for general reference only. The US Fish and Wildlife Service is not responsible for the accuracy or currentness of the base data shown on this map. All wetlands related data should be used in accordance with the layer metadata found on the Wetlands Mapper web site.

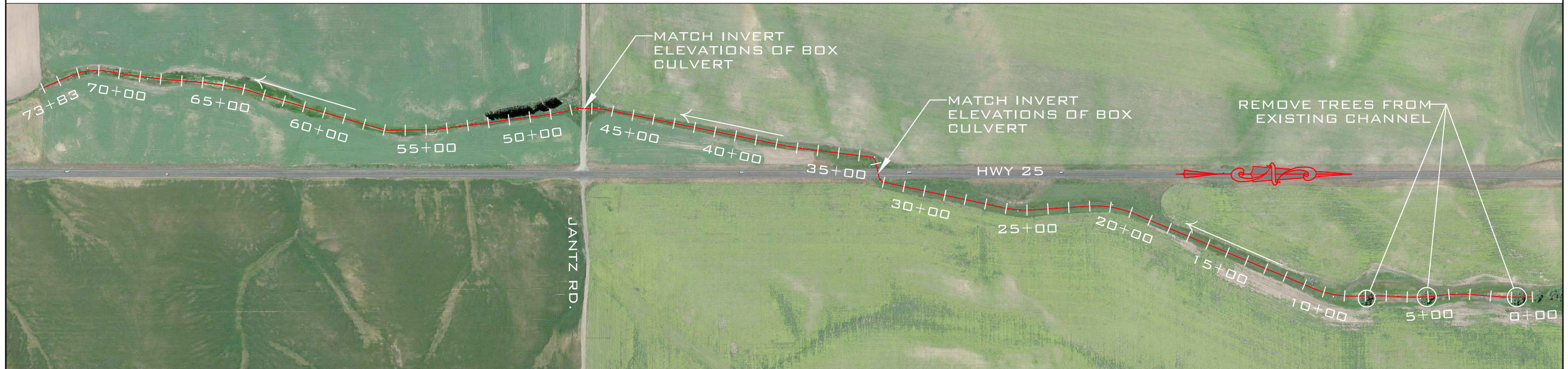
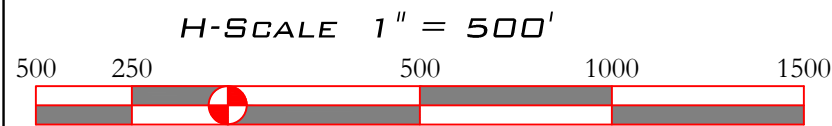


DEWALD DRAINAGEWAY MAINTENANCE / ENHANCEMENT

LOCATED IN SEC. 3, 4, 9, T25N, R37E, W.M.,
LINCOLN COUNTY, WASHINGTON



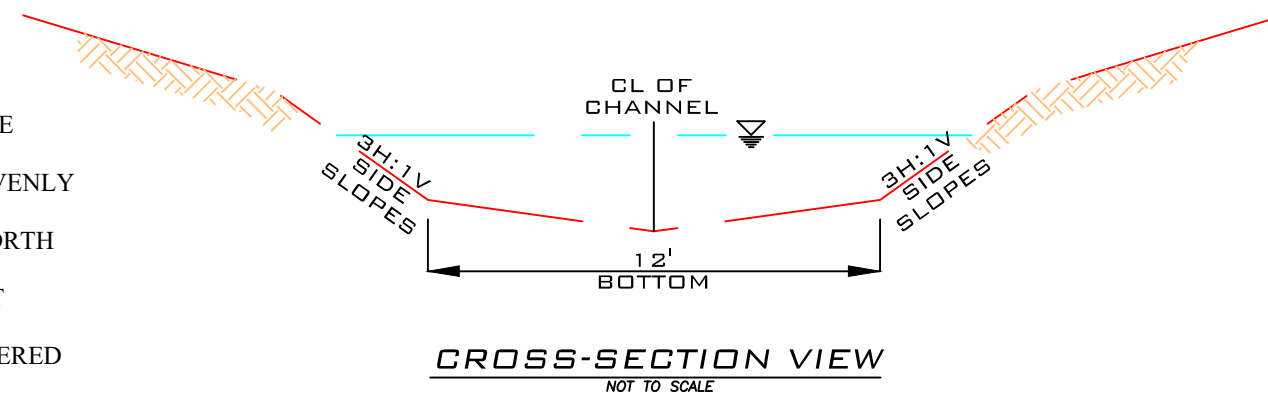
VICINITY MAP
NOT TO SCALE



PLAN VIEW

CONSTRUCTION NOTES:

- ANY CHANGES TO THE DESIGN OR SPECIFICATIONS MUST BE APPROVED BY THE ENGINEER.
- EXCAVATED MATERIAL SHALL BE SPOILED ON SITE AND EVENLY REDISTRIBUTED.
- AS MITIGATION FOR REMOVAL OF THREE TREES ON THE NORTH END OF THE PROJECT THE CONSERVATION DISTRICT SHALL REPLANT VEGETATION ALONG THAT REACH THAT WILL NOT IMPEDE FLOWS IN THE FUTURE.
- ANY ELEVATION DIFFERENCES IN THE CHANNEL ENCOUNTERED AT PROPERTY LINES SHALL BE A GRADUAL TRANSITION.



PROPERTY LINES SHOWN ARE APPROXIMATE.
THIS MAP DOES NOT REPRESENT A BOUNDARY SURVEY



LOCATES (2 WORKING DAYS NOTICE REQUIRED PRIOR TO EXCAVATION)
LOCAL CALLING NUMBERS
Northwest Utility Notification Center 1-800-424-5555

DEWALD DRAINAGEWAY
MAINTENANCE / ENHANCEMENT
LINCOLN COUNTY, WASHINGTON

DRAWN BY: GJA

DESIGNED BY: GJA

APPROVED BY:

PROJECT
18-001

REVISED
2/2018

SHEET
1/1

Dewald Drainageway Project Area - Selected Photos, North to South - 10/31/2017

